

CYLINDER TRACK HEAD

CT1-AD

PROJECT NAME:	TYPE:
---------------	-------



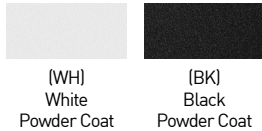
Highlight art, objects, places, spaces, seating areas, and architectural details with a classic profile that offers easy-to-adjust, in-field versatility.

ORDERING INFORMATION - TRACK HEAD



JA8-2019 COMPLIANCE INDICATED BY SHADING

CYLINDER	FIXTURE	RATING	CYLINDER FINISH	BAFFLE FINISH	LUMEN PACKAGE	CCT	OPTIC	DRIVER	EFFECTS DEVICE
CT1	AD	1						CE2	
CT1 2.60"	AD Standard 60°	1 Dry/Damp	WH White BK Black	WH White BK Black	STATIC WHITE 80C12A 80+ CRI, 1200 Source Lumens (Delivered Lumens - 755) 90C10A 90+ CRI, 1000 Source Lumens (Delivered Lumens - 646) 97C09A 97+ CRI, 900 Source Lumens (Delivered Lumens - 576)	27 2700K 30 3000K 35 3500K 40 4000K	15 15° 22 22° 40 40° 60 60°	CE2 120V Electronic ELV Forward / Reverse Phase	STANDARD EFFECTS DEVICE 4 Soft Focus Lens ALTERNATE EFFECTS DEVICE 2 Honeycomb Louver 3 Clear Glass Lens 5 Frosted Glass Lens 6 Frosted Soft Focus Lens 7 Frosted Linear Spread Lens



PART NUMBER NOTES

- CT1 ships as e.g., CT1-AD-1-WHBK-90C10A2-3-CE2-4

ACCESSORIES

ALTERNATE EFFECTS DEVICES

- HCL-CT1** Honeycomb Louver
- CGL-CT1** Clear Glass Lens
- SFL-CT1** Soft Focus Lens
- FGL-CT1** Frosted Glass Lens
- FSFL-CT1** Frosted Soft Focus Lens
- FLSL-CT1** Frosted Linear Spread Lens

REPLACEMENT OPTICS

- Interchangeable optics accessible by removing baffle.
- RO-50-15-2** 15° optic
 - RO-50-22-2** 22° optic
 - RO-50-40-2** 40° optic
 - RO-50-60-2** 60° optic

CYLINDER TRACK HEAD CT1-AD

STATIC WHITE PERFORMANCE - 3000K - SOFT FOCUS LENS

LUMEN PACKAGE	WATTAGE	15° OPTIC		22° OPTIC		40° OPTIC		60° OPTIC	
		DELIVERED	LPW	DELIVERED	LPW	DELIVERED	LPW	DELIVERED	LPW
80C12A	10	843	84	620	62	755	75	717	71
90C10A	10	722	72	531	53	646	64	613	61
97C09A	10	647	64	473	47	576	57	547	54

LIGHT LOSS FACTOR MULTIPLIER	
CGL	1.05
SFL	1.00
FGL	0.90
FSFL	0.87
FLSL	0.83
HCL	0.65

CCT MULTIPLIER			
CCT	80+ CRI	90+ CRI	97+ CRI
2700K	1.158	0.957	0.873
3000K	1.211	1.000	0.912
3500K	1.234	1.019	0.927
4000K	1.249	1.030	0.940

TRACK HEAD

A ADJUSTABILITY

Power supply integrated into fixture body. Up to 60° tilt and 370° rotation.

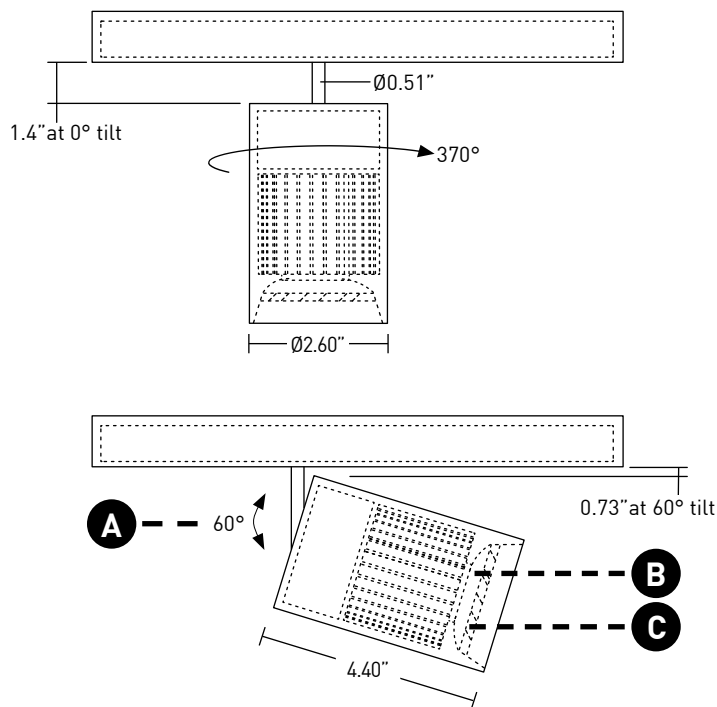
B OPTICS

Proprietary field-changeable optics available in 15°, 22°, 40° & 60° beams.

C EFFECTS DEVICES

Track Head accepts 1 lens; comes standard with Soft Focus Lens.

DIMENSIONS / DRAWINGS



CYLINDER TRACK HEAD CT1-AD

TECHNICAL

CONSTRUCTION

Track Head: Machined aluminum body; painted finishes are granulated powder coat.

LED

2 step MacAdam ellipse LED module available in 80+, 90+ and 97+ CRI configurations in color temperatures of 2700K, 3000K, 3500K, and 4000K. Average rated lamp life: 50,000 hours. LED and driver assemblies are field-replaceable.

POWER SUPPLY PERFORMANCE AND DIMMING INFORMATION

Power Supply	CE2
Minimum °C	-20 °C
Maximum °C	40 °C
Dimming %	3.0%

MOUNTING

Cylinder track head mounts to recessed, surface or pendant mount track assemblies, specified separately.

LISTING

Listed to UL1598 standard for Dry locations.

WARRANTY

Manufacturer's 1-year warranty guarantees product(s) listed to be free from defects in material and workmanship under normal use and service. 5-year warranty on LED and power supply to operate with 70% of the original flux and remain within a range of 3 duv. Warranty period begins from the date of shipment by Seller. [Consult website for full warranty terms and conditions.](#)