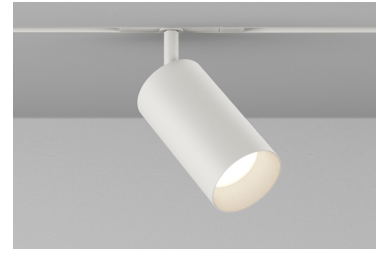


# TRACK HEAD MONOPOINT INSPIRED CTM1 ADJUSTABLE

Highlight art, objects, places, spaces, seating areas, and architectural details with a classic profile that offers easy-to-adjust, in-field versatility.

PROJECT NAME:	TYPE:
---------------	-------



## ORDERING INFORMATION - TRACK HEAD



JA8-2019 COMPLIANCE INDICATED BY SHADING

CYLINDER	FIXTURE	STEM LENGTH	RATING	BODY FINISH	BAFFLE FINISH	STEM FINISH	ADAPTER FINISH	LUMEN PACKAGE	CCT	OPTIC	DRIVER	EFFECTS DEVICE
CTM1		SL	1								CE3	
CTM1 2.60"	<b>A</b> Adjustable 90° Tilt <b>L</b> Wall Mount Adjustable 90° Tilt* <small>*Only available with "SL" Standard Length stem</small>	<b>LENGTH</b> SL 1.4" Standard <b>*STEMS ARE NOT FIELD CUTTABLE</b>	1 Dry	<b>POWDERCOAT</b> WH White BK Black <b>ALUMINA</b> 01 Brushed Obsidian 02 Matte Obsidian 03 Brushed Dark Patinated Bronze 04 Matte Dark Patinated Bronze 05 Brushed Aged Aluminum 06 Matte Aged Aluminum 07 Brushed Cast Brass 08 Matte Cast Brass 09 Brushed Light Patinated Bronze 10 Matte Light Patinated Bronze	POWDERCOAT WH White BK Black <b>ALUMINA</b> CONSULT FACTORY FOR ALUMINA FINISHES	POWDERCOAT WH White BK Black <b>ALUMINA</b> CONSULT FACTORY FOR ALUMINA FINISHES	W White B Black	STATIC WHITE 80C12A 80+ CRI, Delivered Lumens - 867 90C10A 90+ CRI, Delivered Lumens - 743 97C09A 97+ CRI, Delivered Lumens - 653	22 2200K* <small>*Only available with 90+ CRI</small> 27 2700K 30 3000K 35 3500K 40 4000K	10 10°* <small>*Not available with 2200K</small> 15 15° 22 22° 40 40° 60 60°	INTEGRAL CE3 Electronic 3% ELV / TRIAC 120V	<b>STANDARD EFFECTS DEVICE</b> 4 Soft Focus Lens 0 No Lens* <small>*Standard with 10° optic</small> <b>ALTERNATE EFFECTS DEVICE</b> 2 Honeycomb Louver 3 Clear Glass Lens 5 Frosted Glass Lens 6 Frosted Soft Focus Lens 7 Frosted Linear Spread Lens S Soft Focus Lens w/ Honeycomb Louver F Frosted Glass Lens w/ Honeycomb Louver

## PART NUMBER NOTES

- CTM1 ships as e.g., CTM1ASL1WHBKWH90C10A3040CE34W

## POWDERCOAT FINISHES



## ALUMINA FINISHES BY LUCIFER LIGHTING™



\*ALUMINA FINISHES ARE ANODIZED ALUMINUM

# TRACK HEAD MONOPOINT INSPIRED CTM1 ADJUSTABLE

## ACCESSORIES

### ALTERNATE EFFECTS DEVICES

- HCL-CT1** Honeycomb Louver
- CGL-CT1** Clear Glass Lens
- SFL-CT1** Soft Focus Lens
- FGL-CT1** Frosted Glass Lens
- FSFL-CT1** Frosted Soft Focus Lens
- FLSL-CT1** Frosted Linear Spread Lens

### REPLACEMENT OPTICS

- Interchangeable optics accessible by removing baffle.
- RO-50-15-2** 15° optic
  - RO-50-22-2** 22° optic
  - RO-50-40-2** 40° optic
  - RO-50-60-2** 60° optic

## STATIC WHITE PERFORMANCE - 3000K - SOFT FOCUS LENS

LUMEN PACKAGE	WATTAGE	10° OPTIC NO SOFT FOCUS LENS		15° OPTIC SOFT FOCUS LENS		22° OPTIC SOFT FOCUS LENS		40° OPTIC SOFT FOCUS LENS		60° OPTIC SOFT FOCUS LENS	
		DELIVERED	LPW	DELIVERED	LPW	DELIVERED	LPW	DELIVERED	LPW	DELIVERED	LPW
80C12A	10	668	67	867	87	676	68	824	82	805	81
90C10A	10	566	57	743	77	579	58	706	71	690	69
97C09A	10	524	52	653	65	518	52	632	63	618	62



JA8-2019 INDICATED BY SHADING

OUTPUT MULTIPLIER	
CCT	CCT SCALE
2200K (Contact factory for JA8 details)	0.800
2700K	0.957
3000K	1.000
3500K	1.019
4000K	1.030

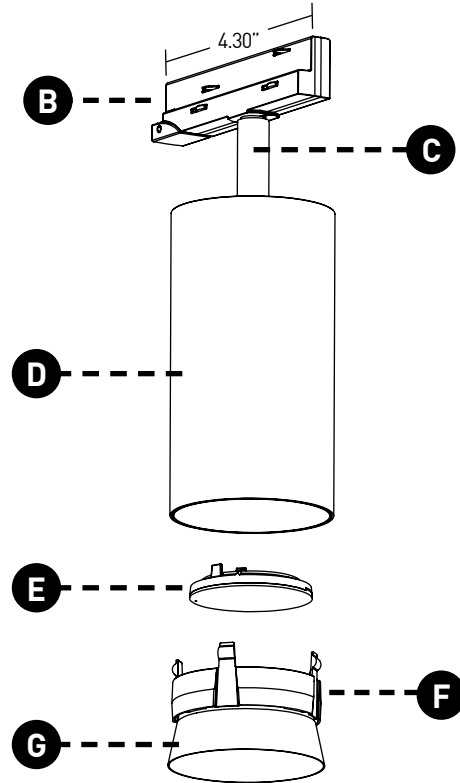
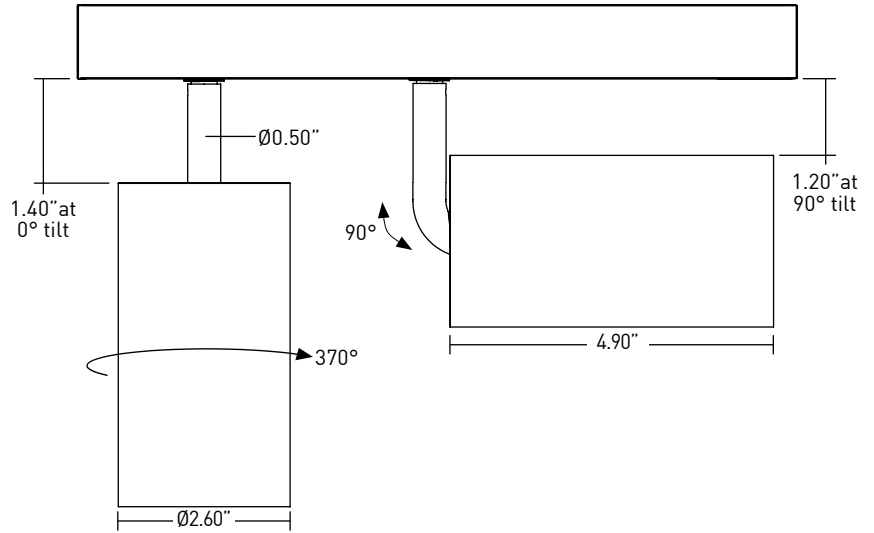
LIGHT LOSS FACTOR MULTIPLIER	
No Lens	1.05
CGL	1.00
SFL	1.00
FGL	0.90
FSFL	0.87
FLSL	0.83
HCL	0.67
SFL W/ HCL	0.59
FGL W/ HCL	0.56

# TRACK HEAD MONOPOINT INSPIRED CTM1 ADJUSTABLE

## TRACK HEAD

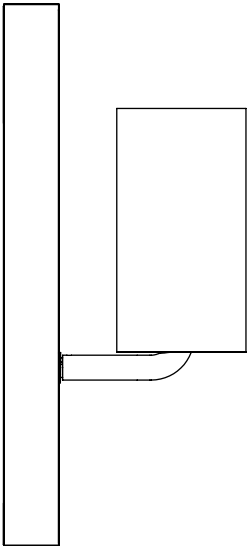
- A ADJUSTABILITY**  
Up to 90° lockable tilt and 370° lockable rotation.
- B TRACK ADAPTER**  
Proprietary asymmetric track adapter; compatible with Lucifer Lighting track only. Available in Black and White finishes to match track systems.
- C STEM**  
Standard length is 1.4". Stem is not field cuttable. Powdercoat finishes standard, consult factory for Alumina finishes.
- D BODY**  
Power supply integrated into fixture body. Available in powdercoat and Alumina finishes.
- E OPTICS**  
Optic integrates Reflection, Refraction and TIR offering 10°, 15°, 22°, 40° & 60° beams.
- F EFFECTS DEVICES**  
Track Head accepts 2 effects devices; Soft Focus Lens standard.
- G BAFFLE**  
Baffle minimizes aperture glare and conceals view into fixture. Powdercoat finishes standard, consult factory for Alumina finishes.

## DIMENSIONS / DRAWINGS



## WALL MOUNT

- CTM1 may be installed in vertical track or wall mounted. Must specify fixture as Wall Mount "L".



# TRACK HEAD MONOPOINT INSPIRED CTM1 ADJUSTABLE

## TECHNICAL

### CONSTRUCTION

Track Head: Machined aluminum body; painted finishes are granulated powder coat; Alumina finishes are anodized.

### STATIC WHITE LED

2-step MacAdam ellipse LED module available in 80+, 90+ and 97+ CRI configurations in color temperatures of 2200K, 2700K, 3000K, 3500K and 4000K. Average rated lamp life: 50,000 hours.

### POWER SUPPLY PERFORMANCE AND DIMMING INFORMATION

Power Supply	CE3
Minimum °C	-20 °C
Maximum °C	40 °C
Dimming %	3.0%

### MOUNTING

Cylinder track head mounts to Lucifer Lighting Company recessed, surface or pendant mount track assemblies, specified separately.

### LISTING

Listed to UL1574 standard for Dry locations. JA8-2019 Title 24 listed.

### LIMITED WARRANTY

Manufacturer's Limited Warranty guarantees product(s) listed to be free from defects in material and workmanship under normal use and service for 1-year. LED and power supplies are warranted to operate with 70% of original flux and remain within a range of 3 duv for a period of 5-years. Warranty period begins from the date of shipment by Seller. [Consult website for full warranty terms and conditions.](#)

### CHANGE LOG

1.03/16/2023: REMOVED ALL STEM LENGTH OFFERINGS EXCEPT STANDARD 1.4" LENGTH.