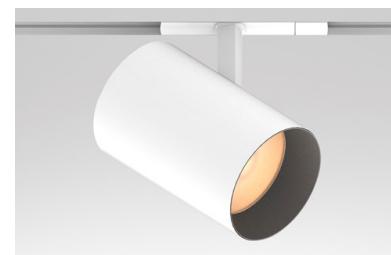


CYLINDER TRACK HEAD

CT2-AD

PROJECT NAME:	TYPE:
---------------	-------



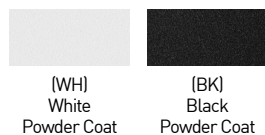
Highlight art, objects, places, spaces, seating areas, and architectural details with a classic profile that offers easy-to-adjust, in-field versatility.

ORDERING INFORMATION - TRACK HEAD



JA8-2019 COMPLIANCE INDICATED BY SHADING

CYLINDER	FIXTURE	RATING	CYLINDER FINISH	BAFFLE FINISH	LUMEN PACKAGE	CCT	OPTIC	DRIVER	EFFECTS DEVICE	WALL MOUNT
CT2	AD	1						CE2		
CT2 3.25"	AD Standard 90°	1 Dry/Damp	WH White BK Black	WH White BK Black	STATIC WHITE 80C12A 80+ CRI, Delivered Lumens - 721 80C19A 80+ CRI, Delivered Lumens - 1112 90C10A 90+ CRI, Delivered Lumens - 618 90C15A 90+ CRI, Delivered Lumens - 953 97C09A 97+ CRI, Delivered Lumens - 553 97C14A 97+ CRI, Delivered Lumens - 853	22 2200K* <small>*[Only available with 90+ CRI]</small> 27 2700K 30 3000K 35 3500K 40 4000K	10 10° <small>*[Only available with 80C12A, 90C10A, and 97C09A. Not available with 2200K]</small> 15 15° 25 25° 40 40° 60 60°	CE2 120V Electronic ELV Forward / Reverse Phase	STANDARD EFFECTS DEVICE 4 Soft Focus Lens 0 No Lens* <small>*[Standard and only available with 10° optic]</small> ALTERNATE EFFECTS DEVICE 2 Honeycomb Louver* <small>*[Not available for Warm Dim]</small> 3 Clear Glass Lens* <small>*[Not available for Warm Dim]</small> 5 Frosted Glass Lens 6 Frosted Soft Focus Lens 7 Frosted Linear Spread Lens	SPECIFY FOR INSTALLATION ON WALL MOUNTED TRACK L Locking Trackhead* <small>*[For Vertical or Wall mounted track]</small>
					WARM DIM 90W11A 90+ CRI, Delivered Lumens - 688 Incandescent Profile 90W13A 90+ CRI, Delivered Lumens - 815 Halogen Profile *SEE PAGE 3 FOR DETAILED WARM DIM PROFILE COMPARISON. *ALL DELIVERED LUMEN OUTPUTS AND T24 COMPLIANCE REFLECT 3000K PAIRED WITH 40° OPTIC AND SOFT FOCUS LENS. REFERENCE PAGE 3 FOR ADDITIONAL T24 COMPLIANT CONFIGURATIONS.	WL 2700K - 1800K WD 3200K - 1800K	25 25° 40 40° 60 60°			



PART NUMBER NOTES

- CT2 ships as e.g., CT2-AD-1-WHBK-90C10A2-3-CE2-4

ACCESSORIES

ALTERNATE EFFECTS DEVICES

- HCL-CT2** Honeycomb Louver*
*[Not available for Warm Dim]
- CGL-CT2** Clear Glass Lens*
*[Not available for Warm Dim]
- SFL-CT2** Soft Focus Lens
- FGL-CT2** Frosted Glass Lens
- FSFL-CT2** Frosted Soft Focus Lens
- FLSL-CT2** Frosted Linear Spread Lens

REPLACEMENT OPTICS

- Interchangeable optics accessible by removing baffle.
- RO-70-15-1** 15° optic*
*[Not available for Warm Dim]
 - RO-70-25-1** 25° optic
 - RO-70-40-1** 40° optic
 - RO-70-60-1** 60° optic

CYLINDER TRACK HEAD CT2-AD

STATIC WHITE PERFORMANCE - 3000K

LUMEN PACKAGE	WATTAGE	10° OPTIC NO SOFT FOCUS LENS		15° OPTIC SOFT FOCUS LENS		20° OPTIC SOFT FOCUS LENS		40° OPTIC SOFT FOCUS LENS		60° OPTIC SOFT FOCUS LENS	
		DELIVERED	LPW	DELIVERED	LPW	DELIVERED	LPW	DELIVERED	LPW	DELIVERED	LPW
80C12A	10	845	49 (14W)	819	82	745	75	721	72	770	77
80C19A	17	-	-	1263	75	1150	69	1112	66	1188	71
90C10A	10	717	42 (14W)	701	70	639	64	618	62	660	66
90C15A	17	-	-	1082	65	985	59	953	57	1017	61
97C09A	10	655	38 (14W)	628	63	572	57	553	55	590	59
97C14A	17	-	-	968	58	881	53	853	51	910	54
90W11A	16	-	-	856	53	834	53	688	44	808	50
90W13A	16	-	-	901	56	842	52	815	50	850	53

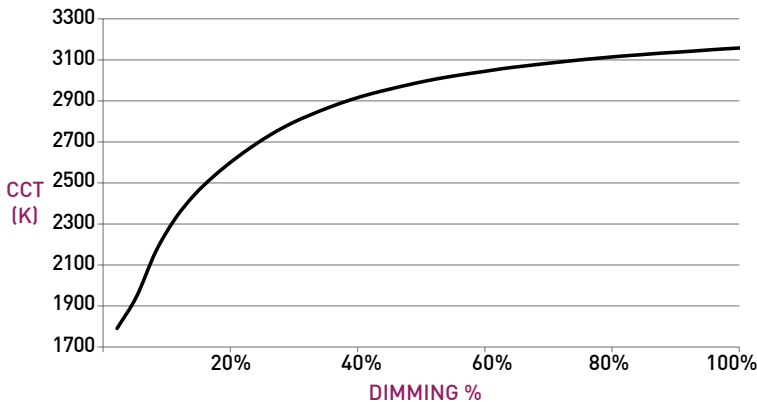
OUTPUT MULTIPLIER	
CCT	CCT SCALE
2200K (Contact factory for JA8 details)	0.800
2700K	0.957
3000K	1.000
3500K	1.019
4000K	1.030

LIGHT LOSS FACTOR MULTIPLIER	
No Lens	
No Lens	1.05
CGL	1.05
SFL	1.00
FGL	0.90
FSFL	0.87
FLSL	0.83
WDL	0.78

WARM DIM PERFORMANCE - SOFT FOCUS LENS - 40° OPTIC

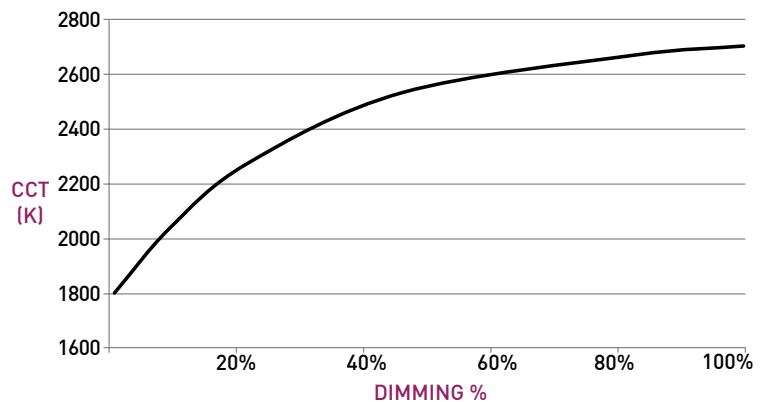
WARM DIM TO MIRROR HALOGEN DIMMING PROFILE

90W13A 3200K - 1800K	Full on 100%	Dimmed to 80%	Dimmed to 70%	Dimmed to 50%	Dimmed to 20%	Dimmed to 10%	Dimmed to 2%
CCT (K)	3200	3150	3100	3000	2700	2200	1800
Light Output (Lm)	815	652	570	407	163	81	16
Power (W)	16	13	11	8	3	1.7	0.3
Efficacy (LPW)	50	50	50	50	50	50	50



WARM DIM TO MIRROR INCANDESCENT DIMMING PROFILE

90W11A 2700K - 1800K	Full on 100%	Dimmed to 80%	Dimmed to 70%	Dimmed to 50%	Dimmed to 20%	Dimmed to 10%	Dimmed to 2%
CCT (K)	2700	2650	2620	2520	2180	1950	1800
Light Output (Lm)	688	550	482	344	138	69	14
Power (W)	16	13	11	8	3	1.7	0.3
Efficacy (LPW)	44	44	44	44	44	44	44



CYLINDER TRACK HEAD CT2-AD

TRACK HEAD

A ADJUSTABILITY

Power supply integrated into fixture body. Toolless hot-aim up to 90° tilt and 370° rotation.

B OPTICS

Proprietary optics available in 10°, 15°, 25°, 40° & 60° beams.

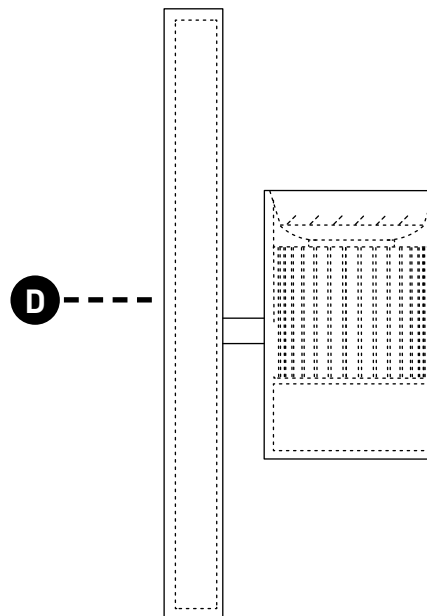
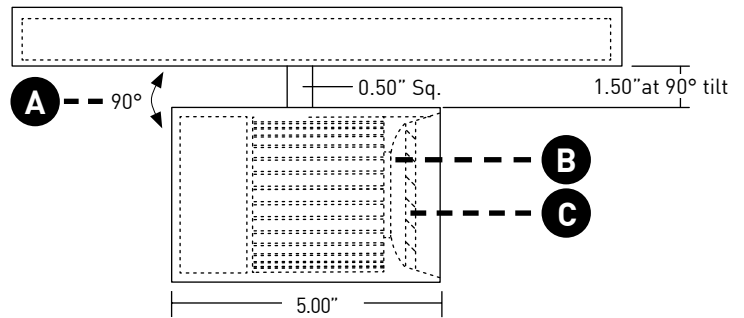
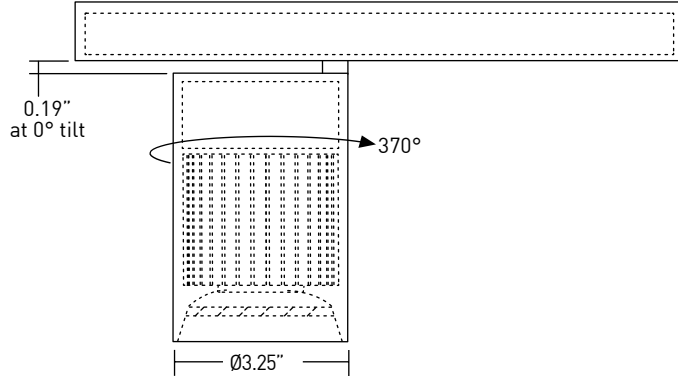
C EFFECTS DEVICES

Track Head accepts 1 lens; comes standard with Soft Focus Lens.

D WALL MOUNT

CT2 may be installed in vertical track or wall mounted. Specify "L" wall mount configuration.

DIMENSIONS / DRAWINGS



CYLINDER TRACK HEAD CT2-AD

TECHNICAL

CONSTRUCTION

Track Head: Machined aluminum body; painted finishes are granulated powder coat.

STATIC WHITE LED

2-step MacAdam ellipse LED module available in 80+, 90+ and 97+ CRI configurations in color temperatures of 2200K, 2700K, 3000K, 3500K and 4000K. Average rated lamp life: 50,000 hours. LED and driver assemblies are field-replaceable.

WARM DIM LED

3-step MacAdam ellipse warm dim LED module available in 90+ CRI configuration. 3200K or 2700K at full brightness, warming to 1800K at full dim. Average rated lamp life of 50,000 hours. LED and driver assemblies are field-replaceable.

POWER SUPPLY PERFORMANCE AND DIMMING INFORMATION

Power Supply	CE2
Minimum °C	-20 °C
Maximum °C	40 °C
Dimming %	2.0%

MOUNTING

Cylinder track head mounts to recessed, surface or pendant mount track assemblies, specified separately.

LISTING

Listed to UL1574 standard for Dry locations.

WARRANTY

Manufacturer's 1-year warranty guarantees product(s) listed to be free from defects in material and workmanship under normal use and service. 5-year warranty on LED and power supply to operate with 70% of the original flux and remain within a range of 3 duv. Warranty period begins from the date of shipment by Seller. [Consult website for full warranty terms and conditions.](#)

CHANGE LOG

1. 01/21/2021: ADDED 2200K, 2700K-1800K WARM DIM AND 10 DEGREE OPTIC OFFERINGS.