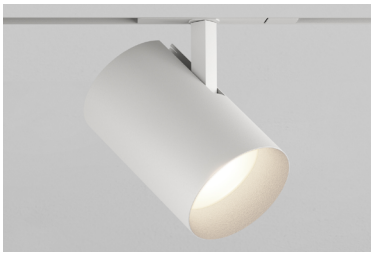


# TRACK HEAD INT STANDARD STEM CT2 ADJUSTABLE

Highlight art, objects, places, spaces, seating areas, and architectural details with a classic profile that offers easy-to-adjust, in-field versatility.

PROJECT NAME:

TYPE:



## ORDERING INFORMATION - TRACK HEAD

CYLINDER	FIXTURE	RATING	BODY FINISH	BAFFLE FINISH	ADAPTER FINISH	CRI / WATTAGE PACKAGE	OCT	OPTIC (UGR)	DRIVER	MEDIA
CT2		1							IE2	
CT2 3.25"	AD Adjustable 90° Tilt  WM Locking Track Adaptor, Adjustable 90° Tilt*  *(Required for Wall Mount)	1 Dry/Damp	POWDERCOAT	POWDERCOAT	WH White	<div><div>STATIC WHITE</div><div>80S11A 80+ CRI, 11 Watts Lumens Delivered - 1216</div><div>80S17A 80+ CRI, 17 Watts Lumens Delivered - 1843</div><div>90S11A 90+ CRI, 11 Watts Lumens Delivered - 1045</div><div>90S17A 90+ CRI, 17 Watts Lumens Delivered - 1583</div><div>97S11A 97+ CRI, 11 Watts Lumens Delivered - 918</div><div>97S17A 97+ CRI, 17 Watts Lumens Delivered - 1390</div></div>	24 2400K* * (90+ CRI only)	10 10° (<19) 15 15° (<13) 20 20° (<10) 25 25° (<10) 40 40° (<10) 60 60° (<16)	IE2 Electronic 2% ELV / TRIAC 220V-240V	STANDARD MEDIA  4 Soft Focus Lens* *(Required for 10° optic)
			BK Black	BK Black	BK Black					
			AB Architectural Bronze	AB Architectural Bronze						
			AG Satin Silver	AG Satin Silver						
			AU Cashmere Gold	AU Cashmere Gold						
			BB Burnt Bronze	BB Burnt Bronze						
			ALUMINA	ALUMINA						
			01 Brushed Obsidian	CONSULT FACTORY FOR ALUMINA FINISHES						
			02 Matte Obsidian							
			03 Brushed Dark Patinated Bronze							
			04 Matte Dark Patinated Bronze			<div><div>WARM DIM</div><div>90L17A 90+ CRI, 17 Watts Incandescent Profile Lumens Delivered - 1244</div><div>Halogen Profile Lumens Delivered - 1309</div><div>SEE PAGE 2 FOR WARM DIM PROFILE COMPARISON.</div></div>	WL 2700K - 1800K  WD 3000K - 1800K	15 15° (<13) 20 20° (<10) 25 25° (<10) 40 40° (<10) 60 60° (<13)		ALTERNATE MEDIA  2 Honeycomb Louver 3 Clear Glass Lens 5 Frosted Glass Lens 6 Frosted Soft Focus Lens 7 Frosted Linear Spread Lens S Soft Focus Lens w/ Honeycomb Louver F Frosted Glass Lens w/ Honeycomb Louver N No Lens
			05 Brushed Aged Aluminum							
			06 Matte Aged Aluminum							
			07 Brushed Cast Brass							
			08 Matte Cast Brass							
			09 Brushed Light Patinated Bronze							
			10 Matte Light Patinated Bronze							

ALUMINA FINISHES BY LUCIFER LIGHTING™

(01) Brushed Obsidian

(03) Brushed Dark Patinated Bronze

(05) Brushed Aged Aluminum

(07) Brushed Cast Brass

(09) Brushed Light Patinated Bronze

(02) Matte Obsidian

(04) Matte Dark Patinated Bronze

(06) Matte Aged Aluminum

(08) Matte Cast Brass

(10) Matte Light Patinated Bronze

POWDERCOAT FINISHES

(WH) White

(BK) Black

(AB) Architectural Bronze

(AG) Satin Silver

(AU) Cashmere Gold

(BB) Burnt Bronze

TRACK HEAD INT STANDARD STEM CT2 ADJUSTABLE

ACCESSORIES

ALTERNATE MEDIA

- ☐ HCL-CT2 Honeycomb Louver
- ☐ CGL-CT2 Clear Glass Lens
- ☐ SFL-CT2 Soft Focus Lens
- ☐ FGL-CT2 Frosted Glass Lens
- ☐ FSFL-CT2 Frosted Soft Focus Lens
- ☐ FLSL-CT2 Frosted Linear Spread Lens

REPLACEMENT OPTICS

Interchangeable optics accessible by removing baffle.

Static White

- ☐ RO-70-15-S 15° optic
- ☐ RO-70-20-S 20° optic
- ☐ RO-70-25-S 25° optic
- ☐ RO-70-40-S 40° optic
- ☐ RO-70-60-S 60° optic

Warm Dim

- ☐ RO-70-15-W 15° optic
- ☐ RO-70-20-W 20° optic
- ☐ RO-70-25-W 25° optic
- ☐ RO-70-40-W 40° optic
- ☐ RO-70-60-W 60° optic

STATIC WHITE PERFORMANCE - 3000K

LUMEN PACKAGE	WATTAGE	10° OPTIC		15° OPTIC		20° OPTIC		25° OPTIC		40° OPTIC		60° OPTIC	
		SOFT FOCUS LENS		SOFT FOCUS LENS		SOFT FOCUS LENS		SOFT FOCUS LENS		SOFT FOCUS LENS		SOFT FOCUS LENS	
		DELIVERED	LPW	DELIVERED	LPW	DELIVERED	LPW	DELIVERED	LPW	DELIVERED	LPW	DELIVERED	LPW
80S11A	11	613	55	1143	104	1216	111	1202	109	1124	102	949	86
80S17A	17	828	49	1750	103	1843	108	1823	107	1690	99	1440	85
90S11A	11	528	48	982	89	1045	95	1033	94	966	88	815	74
90S17A	17	714	42	1503	88	1583	91	1566	92	1452	85	1237	73
97S11A	11	456	41	862	78	918	83	907	82	848	77	716	65
97S17A	17	616	36	1320	78	1390	82	1375	81	1275	75	1086	64
90L17AL (2700K-1800K)	17	-	-	1249	73	1244	73	1229	72	1177	69	1046	62
90L17AD (3000K-1800K)	17	-	-	1314	77	1309	77	1293	76	1238	73	1100	65

Part L 75+ LPW configurations comply with residential Part L  
95+ LPW configurations comply with commercial Part L

UNIFIED GLARE RATING

10° OPTIC SOFT FOCUS LENS	15° OPTIC SOFT FOCUS LENS	20° OPTIC SOFT FOCUS LENS	25° OPTIC SOFT FOCUS LENS	40° OPTIC SOFT FOCUS LENS	60° OPTIC SOFT FOCUS LENS
>19	<13	<10	<10	<10	<16

MEDIA LIGHT LOSS MULTIPLIER

MEDIA	LIGHT LOSS FACTOR
No Lens	1.05
CGL	0.97
SFL	1.00
FGL	0.85
FSFL	0.82
FLSL	0.78
WDL	0.00
HCL	0.75
SFL W/ HCL	0.68
FGL W/ HCL	0.47

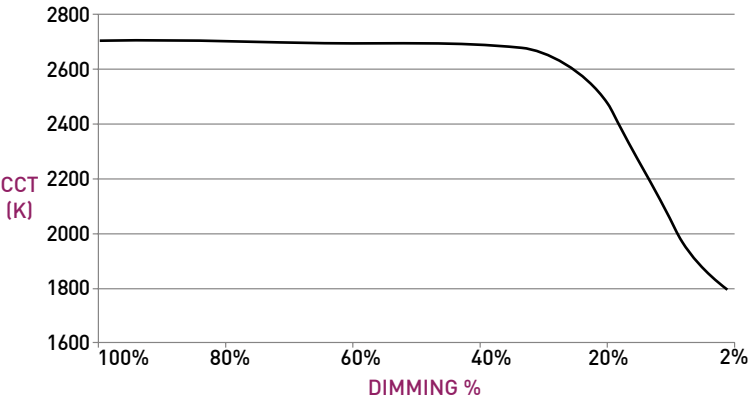
OUTPUT MULTIPLIER

CCT	CCT SCALE
2400K	0.85
2700K	0.97
3000K	1.000
3500K	1.03
4000K	1.08

WARM DIM PERFORMANCE - SOFT FOCUS LENS - 20° OPTIC

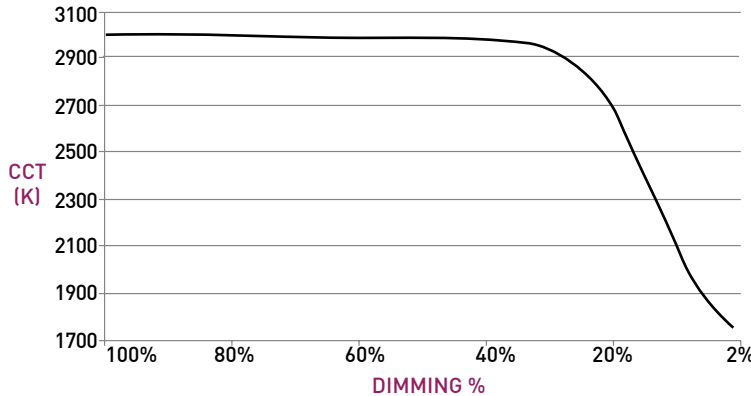
INCANDESCENT PROFILE

90L17AWL 2700K - 1800K	Full on 100%	Dimmed to 80%	Dimmed to 70%	Dimmed to 50%	Dimmed to 20%	Dimmed to 10%	Dimmed to 2%
CCT (K)	2700	2700	2700	2700	2500	1950	1800
Light Output (Lm)	1244	995	871	622	249	124	25
Power (W)	17	8.8	7.7	5.5	2.2	1.1	0.2
Efficacy (LPW)	73	73	73	73	73	73	73



HALOGEN PROFILE

90L17AWD 3000K - 1800K	Full on 100%	Dimmed to 80%	Dimmed to 70%	Dimmed to 50%	Dimmed to 20%	Dimmed to 10%	Dimmed to 2%
CCT (K)	3000	3000	3000	3000	3000	2150	1800
Light Output (Lm)	1309	1047	916	655	262	131	26
Power (W)	17	8.8	7.7	5.5	2.2	1.1	0.2
Efficacy (LPW)	77	77	77	77	77	77	77



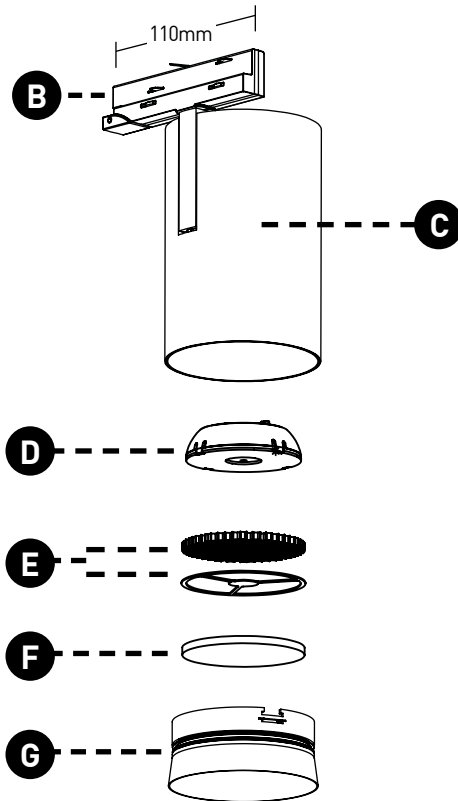
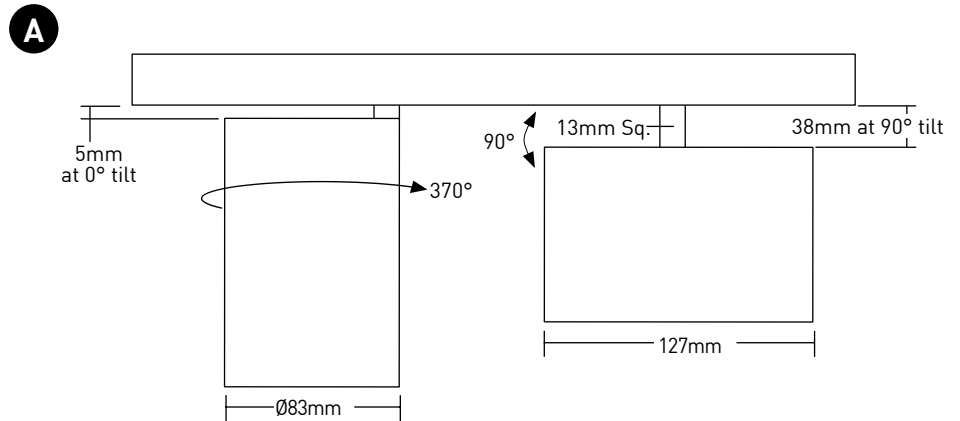
NOTE: LIN-TO-LIN 0-10V PAIRING NOT COMPATIBLE WITH WARM DIM.

# TRACK HEAD INT STANDARD STEM CT2 ADJUSTABLE

## TRACK HEAD

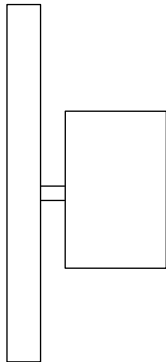
- A ADJUSTABILITY**  
Up to 90° tilt and 370° rotation.
- B TRACK ADAPTER**  
Proprietary asymmetric track adapter; compatible with Lucifer Lighting track only. Available in Black and White finishes to match track systems.
- C BODY**  
Power supply integrated into fixture body. Features integral stem. Available in powdercoat and Alumina finishes.
- D OPTICS**  
Robust light engine with optimized optic pairing integrates Reflection, Refraction, and TIR offering 10°, 15°, 20°, 25°, 40° & 60° beams.
- E 10° FIELD REDUCER**  
Provided with 10° optic, includes honeycomb louver. Reduces field angle by 30%.
- F MEDIA**  
Soft Focus Lens standard. Wet location media sealed in place.
- G BAFFLE**  
Accepts 2 media devices. Baffle minimizes aperture glare and conceals view into fixture. Powdercoat finishes standard, consult factory for Alumina finishes.

## DIMENSIONS / DRAWINGS



## WALL MOUNT

- CT2 may be installed in vertical track or wall mounted. Must specify fixture as Wall Mount "WM".



# TRACK HEAD INT STANDARD STEM CT2 ADJUSTABLE

## TECHNICAL

### CONSTRUCTION

Track Head: Machined aluminum body; painted finishes are granulated powder coat.

### STATIC WHITE LED



2-step MacAdam ellipse LED module available in 80+, 90+ and 97+ CRI configurations in color temperatures of 2700K, 3000K, 3500K and 4000K. 3-step MacAdam ellipse LED module available in 90+ CRI configuration in color temperature of 2400K. Average rated lamp life of 50,000 hours.

### WARM DIM LED



3-step MacAdam ellipse warm dim LED module available in 90+ CRI configuration. 3000K or 2700K at full brightness, warming to 1800K at full dim. Average rated lamp life of 50,000 hours.

### POWER SUPPLY PERFORMANCE AND DIMMING INFORMATION

Power Supply	IE2
Minimum °C	-20 °C
Maximum °C	40 °C
Dimming %	2.0%

### MOUNTING

Cylinder track head mounts to recessed or surface mount track assemblies, specified separately.

### LISTING

Track heads and drivers CE Listed for dry locations. Drivers ENEC and CB Listed.

### PART L

Part L compliant for all 75+ LPW residential and 95+ LPW commercial configurations.

### WARRANTY

Manufacturer's 1-year warranty guarantees product(s) listed to be free from defects in material and workmanship under normal use and service. 5-year warranty on LED and power supply to operate with 70% of the original flux and remain within a range of 3 duv. Warranty period begins from the date of shipment by Seller. [Consult website for full warranty terms and conditions.](#)

### CHANGE LOG

- 05/12/2023: ADDED LBC RED LIST APPROVED.
- 08/08/2023: ADDED NEW LED AND OPTIC SYSTEM.
- 02/08/2024: ADDED 2400K OFFERING.
- 02/15/2024: PART L COMPLIANCE ADDED.
- 03/18/2024: UPDATED 10 DEGREE NARROW BEAM TO UTILIZE FIELD REDUCER.
- 09/19/2024: UPDATED WITH NEW BAFFLE DESIGN.
- 05/07/2025: UPDATED WARM DIM OFFERING.