

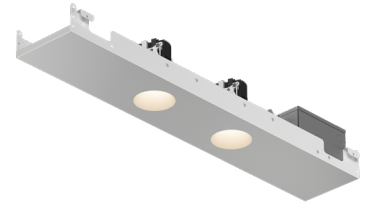
# PANELUX™ FRAXION®3

The Panelux™ lighting system provides solutions to aesthetic problems of other industry products.

The Panelux™ lighting system is a patent pending innovative solution integrating recessed downlights into metal ceiling panels designed for use with T-Grid systems like Armstrong Techzone®, USG Logix™, and HunterDouglas®\*.

**SHIPPING MAY 2025**

|               |       |
|---------------|-------|
| PROJECT NAME: | TYPE: |
|---------------|-------|



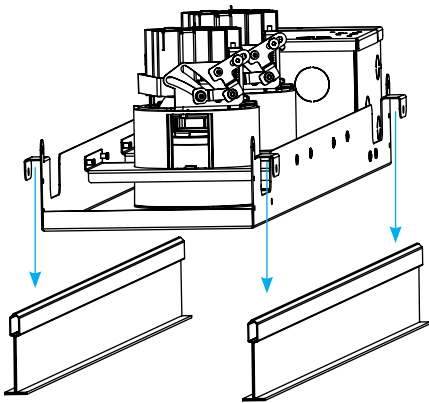
## OPTIONALITY

- Configurable dimensions, with panel lengths from 12" - 60" and panel widths in 4" and 6".
- Available in single, dual, triple and quadruple fixtures with round or square trimless downlights in any combination of fixed / adjustable / wallwasher.
- Choose your on-center spacing and controls grouping.
- UGR as low as 1.

## INSTALLER FRIENDLY

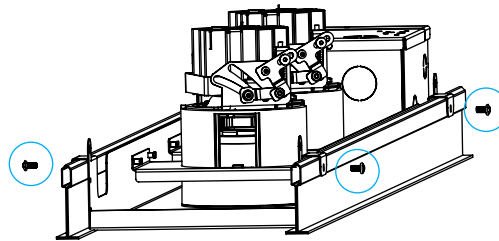
5 minute install process requires one trade professional. Pre-assembled product ships complete. Reduces install time by at least 50% compared to other industry leading panel downlights.

### STEP 1



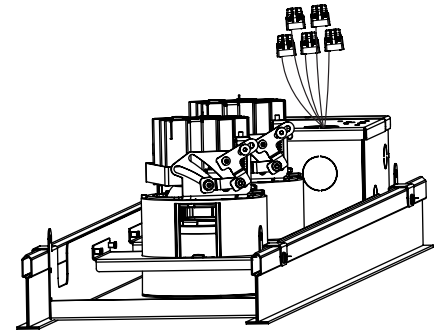
PLACE PANEL IN T-GRID  
(T-GRID SUPPLIED BY OTHERS)

### STEP 2



SECURE WITH SCREWS  
(SCREWS SUPPLIED BY OTHERS)

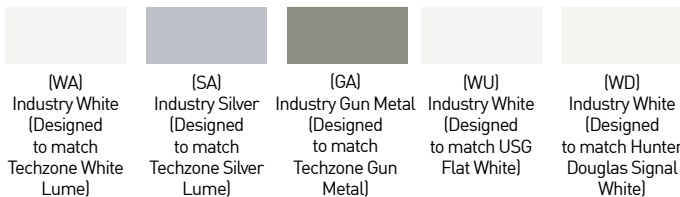
### STEP 3



MAKE WIRING CONNECTIONS

## AVAILABLE FINISHES

### INDUSTRY MATCHING POWDERCOAT



### LUCIFER LIGHTING STANDARD POWDERCOAT



\* Techzone is a registered trademark of AWI Licensing LLC, Logix is a trademark of USG Corporation, HunterDouglas is a registered trademark of Hunter Douglas Corporation. Lucifer Lighting has no association with Armstrong or AWI Licensing, USG Corporation, or Hunter Douglas Corporation.

# PANELUX™ FRAXION®3

|               |       |
|---------------|-------|
| PROJECT NAME: | TYPE: |
|---------------|-------|

## ORDERING INFORMATION - PANEL

| COMPLETE SPECIFICATION | PANEL (REQUIRED) | LED / DRIVER (REQUIRED) | ZONE 1 (REQUIRED) | ZONE 2 (AS NEEDED) |
|------------------------|------------------|-------------------------|-------------------|--------------------|
|------------------------|------------------|-------------------------|-------------------|--------------------|

### SPECIFICATION INSTRUCTIONS:

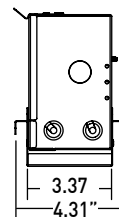
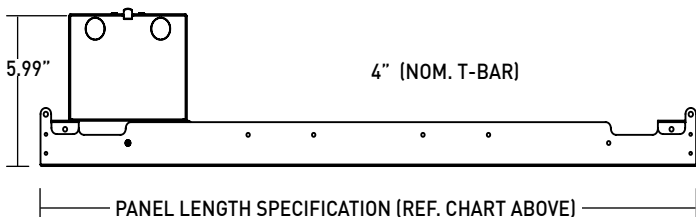
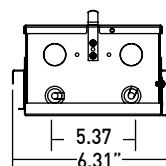
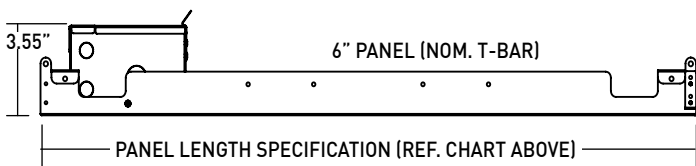
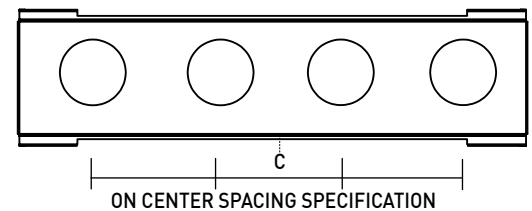
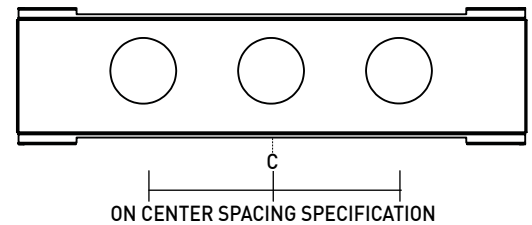
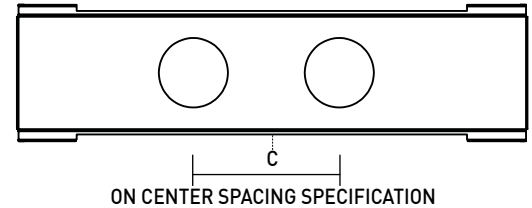
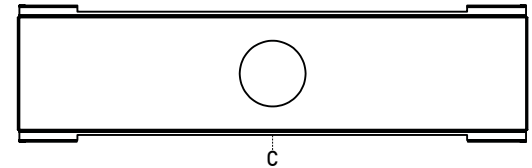
- Specify one or two control zones, all fixtures on each control zone are the same type.
- All fixtures are specified with the same baffle finish.

### REQUIRED

| PANEL        | FIXTURE SHAPE  | PANEL WIDTH (INCHES)                               | PANEL FINISH | PANEL LENGTH (INCHES)         | BAFFLE FINISH   | FIXTURE COUNT | FIXTURE LAYOUT / CONTROL ZONES | ON CENTER SPACING (INCHES) |
|--------------|----------------|--|--------------|-------------------------------|---|---------------|--------------------------------|----------------------------|
| <b>PANEL</b> | <b>P</b> Panel |  |              |                               |   |               |                                |                            |
|              | P Panel        | F3R Round<br>F3S Square<br>F3T Square Transitional | 4<br>6       | INDUSTRY MATCHING POWDERCOATS | SINGLE  | POWDERCOAT    |                                |                            |
|              |                |  |              | 18                            | WH White  | 1 Single      | A                              | SINGLE                     |
|              |                |  |              | 24                            | AB Architectural Bronze   | 2 Dual        | B                              | DUAL*                      |
|              |                |  |              | 30                            | AG Satin Silver   |               | C                              |                            |
|              |                |  |              | 36                            | SA Industry Silver (Designed to match Techzone White Lume)        | 3 Triple      | D                              |                            |
|              |                |  |              | 42                            | BB Burnt Bronze   |               | E                              |                            |
|              |                |  |              | 48                            | SA Industry Silver (Designed to match Techzone Silver Lume)       |               | F                              |                            |
|              |                |  |              | 60                            | BK Black  |               | G                              |                            |
|              |                |  |              |                               | PR Primer   |               | H                              |                            |
|              |                |  |              |                               | CF Custom Finish* (Consult Factory)                               |               | I                              |                            |
|              |                |  |              |                               | GA Industry Gun Metal (Designed to match Techzone Gun Metal)      | 4 Quad        | J                              |                            |
|              |                |  |              |                               | WU Industry White (Designed to match USG Flat White)              |               | K                              |                            |
|              |                |  |              |                               | WD Industry White (Designed to match Hunter Douglas Signal White) |               | L                              |                            |
|              |                |  |              |                               | CF Custom Finish / Other Industry Finish* (Consult Factory)       |               | M                              |                            |
|              |                |  |              |                               | WA Industry White   |               |                                |                            |
|              |                |  |              |                               | SA Industry Silver  |               |                                |                            |
|              |                |  |              |                               | GA Industry Gun Metal   |               |                                |                            |
|              |                |  |              |                               | WU Industry White   |               |                                |                            |
|              |                |  |              |                               | WD Industry White   |               |                                |                            |
|              |                |  |              |                               | CF Other Industry Finish* (Consult Factory)                       |               |                                |                            |

### FIXTURE SPACING GUIDE

| FIXTURE COUNT | LENGTH (INCHES) | ON-CENTER SPACING (INCHES) |    |    |    |    |    |
|---------------|-----------------|----------------------------|----|----|----|----|----|
|               |                 | 08                         | 10 | 12 | 16 | 18 | 24 |
| SINGLE        | ALL             | CENTERED IN PANEL          |    |    |    |    |    |
| DUAL          | 30              | ✓                          | ✓  | -  | -  | -  | -  |
|               | 36              | ✓                          | ✓  | ✓  | -  | -  | -  |
|               | 42              | ✓                          | ✓  | ✓  | ✓  | ✓  | -  |
|               | 48              | ✓                          | ✓  | ✓  | ✓  | ✓  | ✓  |
|               | 60              | ✓                          | ✓  | ✓  | ✓  | ✓  | ✓  |
| TRIPLE        | 36              | ✓                          | -  | -  | -  | -  | -  |
|               | 42              | ✓                          | ✓  | -  | -  | -  | -  |
|               | 48              | ✓                          | ✓  | ✓  | -  | -  | -  |
|               | 60              | ✓                          | ✓  | ✓  | ✓  | ✓  | -  |
|               | 60              | ✓                          | ✓  | ✓  | -  | -  | -  |
| QUAD          | 48              | ✓                          | -  | -  | -  | -  | -  |
|               | 60              | ✓                          | ✓  | ✓  | -  | -  | -  |



|               |       |
|---------------|-------|
| PROJECT NAME: | TYPE: |
|---------------|-------|

## ORDERING INFORMATION - LED / DRIVER

|                        | PANEL (REQUIRED) | LED / DRIVER (REQUIRED) | ZONE 1 (REQUIRED) | ZONE 2 (AS NEEDED) |
|------------------------|------------------|-------------------------|-------------------|--------------------|
| COMPLETE SPECIFICATION |                  |                         |                   |                    |



### SPECIFICATION INSTRUCTIONS:

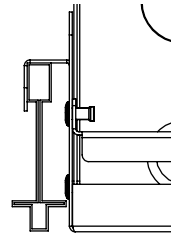
- All fixtures on Zone 1 and Zone 2 must be specified with the same CRI and CCT.
- All fixtures specified on each zone are controlled together.
- Zones 1 and 2 can be controlled together or independently. Separate switch legs are required for independent control.

### SPECIFICATION REQUIRED

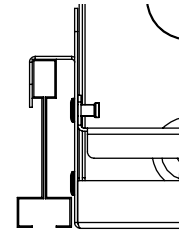
|                   | CRI  | CCT  | DRIVER (120V-277V)  |
|-------------------|--|--|---|
| <b>LED DRIVER</b> | <b>STATICWHITE</b>   |  | <b>A</b> eldoLED ECOdrive, 0-10V LOG, 1% (SG3)*<br><small>*16W MAX PER FIXTURE HEAD</small> |
|                   | 1 80+ CRI (80S)  | A 2400K (24)*<br><small>*90-CRI ONLY, 15W MAX!</small> | <b>B</b> eldoLED ECOdrive, 0-10V LIN, 1% (SN3)*<br><small>*16W MAX PER FIXTURE HEAD</small> |
|                   | 2 90+ CRI (90S)  | B 2700K (27)   | <b>C</b> eldoLED SOLOdrive, 0-10V LOG, 0.1% (EG1)   |
|                   | 3 95+ CRI (95S)*<br><small>*SHALLOW REGRESS LED IS 97+ CRI</small> | C 3000K (30)<br>E 3500K (35)<br>F 4000K (40)           | <b>D</b> eldoLED SOLOdrive, 0-10V LIN, 0.1% (EN1)   |
|                   | <b>WARM DIM</b>  |  | <b>E</b> eldoLED SOLOdrive, DALI-2 DT6, 0.1% (ED1)  |
|                   | W 90+ CRI (90W)  | D 3000K - 1800K (WD)<br>L 2700K - 1800K (WL)           | <b>F</b> Lutron, Hi-Lume Premier Ecosystem Fade to Black, 0.1% (LP1)                        |
|                   | <b>TUNABLEWHITE</b>  |  | <b>G</b> Athena Control eldoLED SOLOdrive, 0.1% (AS1)                                       |
|                   | T 90+ CRI (90T)  | H 5000K - 2700K (TH)<br>R 4000K - 1800K (TR)           | <b>H</b> Casambi Control eldoLED SOLOdrive, 0.1% (CS1)                                      |
|                   | <b>TUNABLEWHITE ONLY</b>   |  | <b>I</b> eldoLED, DUALdrive, 0-10V LOG, 0.1% (DG1)  |
|                   |  |  | <b>J</b> eldoLED, DUALdrive, DALI-2 DT8, 0.1% (DD2)   |
|                   |  |  | <b>K</b> Athena Control eldoLED SOLOdrive, 0.1% (AD1)                                       |
|                   |  |  | <b>L</b> Casambi Control eldoLED SOLOdrive, 0.1% (CD1)                                      |

### PANEL MOUNTING DETAILS

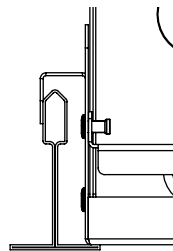
9/16" T-GRID  
TEGULAR



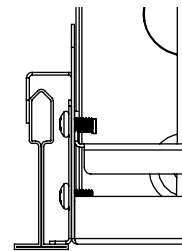
9/16" T-GRID  
BOLT SLOT



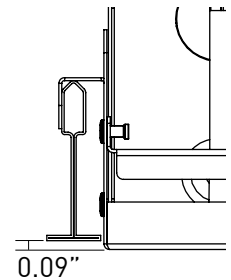
15/16" T-GRID



9/16" T-GRID\*



9/16" T-GRID  
TEGULAR



\* 9/16" T-grid requires accessory part number PANEL-BRACKET.

|               |       |
|---------------|-------|
| PROJECT NAME: | TYPE: |
|---------------|-------|

## ORDERING INFORMATION - ZONE 1

|                        | PANEL (REQUIRED) | LED / DRIVER (REQUIRED) | ZONE 1 (REQUIRED) | ZONE 2 (AS NEEDED) |
|------------------------|------------------|-------------------------|-------------------|--------------------|
| COMPLETE SPECIFICATION |                  |                         |                   |                    |



### SPECIFICATION INSTRUCTIONS:

- Zone 1 specification required, reference layout/ control zones specification from page 2.
- All fixtures on Zone 1 will carry the same specification.
- Specify Zone 2 fixtures on page 5.

REF. ONLY  
FROM P. 2

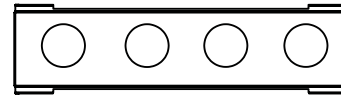
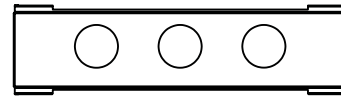
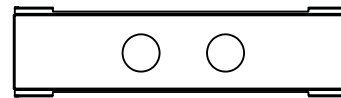
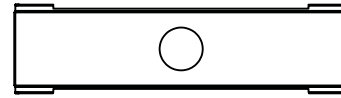
### ZONE 1 - REQUIRED

| TRIM TYPE  | LED WATTAGE                      | OPTIC  | MEDIA  |  |
|--|----------------------------------|--|--|--|
|  |                                  |  |  |  |
| <b>Z</b><br><b>O</b><br><b>N</b><br><b>E</b><br><br><b>1</b> | AS Adjustable Shallow Regress    | N 15W 10° Static White, 1729lm (15C)                 | N 10° (10)   |  |
|  | FS Fixed Shallow Regress         | A 6W Static White, 795lm (06A)                       | 1 15° (15)*<br><small>*NOT AVAILABLE WITH WARM DIM</small> | <b>STANDARD MEDIA</b><br>4 Soft Focus Lens (04)*<br><small>*REQUIRED FOR N(10°) OPTIC</small><br>W Wallwash Lens (WW)*<br><small>*REQUIRED AND ONLY AVAILABLE WITH WALLWASH</small>  |
|  |                                  | F 11W Static White, 1279lm (11A)                     | 2 20° (20)   |  |
|  | WW Wallwash                      | L 15W Static White, 1729lm (15A)                     | 3 25° (25)   | <b>ALTERNATE MEDIA</b><br>1 Honeycomb Louver (01)*<br><small>*NOT AVAILABLE WITH ADJUSTABLE FIXTURES OR WARM DIM</small><br>2 Clear Glass Lens (02)*<br><small>*NOT AVAILABLE WITH WARM DIM</small><br>3 Frosted Glass Lens (03)<br>5 Frosted Soft Focus Lens (05)<br>6 Frosted Linear Spread Lens (06)<br>7 Wide Distribution Lens (07)*<br><small>*REQUIRED AND ONLY AVAILABLE WITH 8(80°/85°) OPTIC</small> |
|  |                                  | T 21W Static White, 2435lm (21A)                     | 4 40° (40)   |  |
|  | H 11W Warm Dim (11A)             | WL 2600K - 1800K: 757lm<br>WD 3000K - 1800K: 766lm   | 6 60° (60)   | 8 85° (85)*<br><small>*REQUIRES FOR 7 WIDE DISTRIBUTION LENS</small><br>W Wallwash (WW)<br>PERFORMANCE REFLECT 80+CRI / 3000K PAIRED WITH 20° OPTIC  |
|  |                                  | O 15W Warm Dim (15A)                                 | WL 2700K - 1800K: 1046lm<br>WD 3000K - 1800K: 1071lm       |  |
|  | R 17W Tunable White (17A)        | TR 4000K - 1800K: 1235lm<br>TH 5000K - 2700K: 1231lm | N 10° (10)   | H Adjustable Honeycomb Louver and Soft Focus Lens (HS)*<br><small>*NOT AVAILABLE WITH FIXED FIXTURES. 16W MAX</small><br>N No Lens (NL)*<br><small>*NOT AVAILABLE WITH WARM DIM</small>  |
|  |                                  | AD Adjustable Deep Regress                           | D 9W 10° Static White, 363lm (09H)                         |  |
|  | FD Fixed Deep Regress            | B 6W Static White, 524lm (06D)                       | 1 15° (15)*<br><small>*NOT AVAILABLE WITH WARM DIM</small> | 2 25° (25)<br>3 35° (35)<br>5 50° (50)<br>8 80° (80)*<br><small>*REQUIRES FOR 7 WIDE DISTRIBUTION LENS</small><br>PERFORMANCE REFLECT 80+CRI / 3000K PAIRED WITH 50° OPTIC   |
| G 11W Static White, 842lm (11D)                              |                                  | M 15W Static White, 1138lm (15D)                     |  |  |
|  | S 19W Static White, 1537lm (19D) | I 11W Warm Dim (11D)                                 | WL 2600K - 1800K: 489lm<br>WD 2900K - 1800K: 495lm         |  |
| Q 16W Warm Dim (16D)   |                                  | WL 2700K - 1800K: 684lm<br>WD 3000K - 1800K: 693lm   | E 10W Tunable White (10D)                                  | TR 4000K - 1800K: 746lm<br>TH 5000K - 2700K: 657lm   |

### FIXTURE LAYOUT / CONTROL ZONES

- 1 = ZONE 1
- 2 = ZONE 2

|   |         |
|---|---------|
| A | 1       |
| B | 1 1     |
| C | 1 2     |
| D | 1 1 1   |
| E | 1 1 2   |
| F | 1 2 2   |
| G | 1 2 1   |
| H | 2 1 2   |
| I | 1 1 1 1 |
| J | 1 1 2 2 |
| K | 1 2 1 2 |
| L | 1 2 2 1 |
| M | 2 1 1 2 |

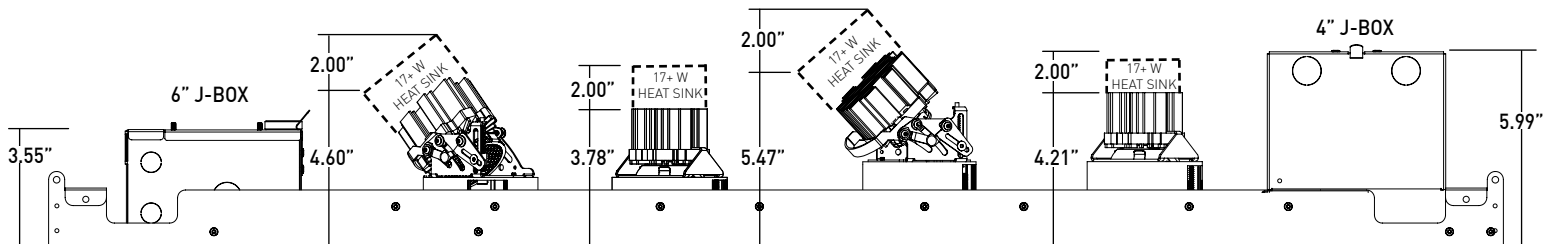


ADJUSTABLE SHALLOW REGRESS

FIXED / WALLWASH SHALLOW REGRESS

ADJUSTABLE DEEP REGRESS

FIXED / WALLWASH DEEP REGRESS



# PANELUX™ FRAXION®3

|               |       |
|---------------|-------|
| PROJECT NAME: | TYPE: |
|---------------|-------|

## ORDERING INFORMATION - ZONE 2

|                        | PANEL (REQUIRED) | LED / DRIVER (REQUIRED) | ZONE 1 (REQUIRED) | ZONE 2 (AS NEEDED) |
|------------------------|------------------|-------------------------|-------------------|--------------------|
| COMPLETE SPECIFICATION |                  |                         |                   |                    |

### SPECIFICATION INSTRUCTIONS:

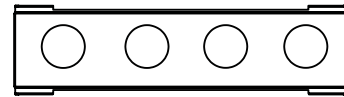
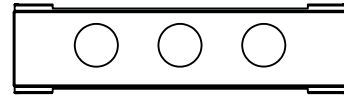
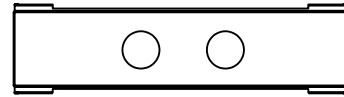
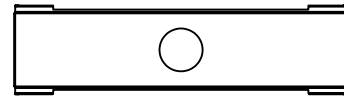
- Specify Zone 2 as needed based upon fixture layout/ control zones specification from page 2.
- All fixtures on Zone 2 will carry the same specification.

REF. ONLY  
FROM P. 2

### ZONE 2 - AS NEEDED

|                  | TRIM TYPE                     | LED WATTAGE   | OPTIC   | MEDIA  |  |
|------------------|-------------------------------|---|---|--|--|
| Z<br>O<br>N<br>E | AS Adjustable Shallow Regress | N 15W 10° Static White, 1729lm (15C)  | N 10° (10)  | <b>STANDARD MEDIA</b><br><b>4</b> Soft Focus Lens (04)*<br><small>*REQUIRED FOR N(10°) OPTIC</small><br><b>W</b> Wallwash Lens (WW)*<br><small>*REQUIRED AND ONLY AVAILABLE WITH WALLWASH</small><br><b>ALTERNATE MEDIA</b><br><b>1</b> Honeycomb Louver (01)*<br><small>*NOT AVAILABLE WITH ADJUSTABLE FIXTURES OR WARM DIM</small><br><b>2</b> Clear Glass Lens (02)*<br><small>*NOT AVAILABLE WITH WARM DIM</small><br><b>3</b> Frosted Glass Lens (03)<br><b>5</b> Frosted Soft Focus Lens (05)<br><b>6</b> Frosted Linear Spread Lens (06)<br><b>7</b> Wide Distribution Lens (07)*<br><small>*REQUIRED AND ONLY AVAILABLE WITH 8(80°) / 8(5°) OPTIC</small><br><b>H</b> Adjustable Honeycomb Louver and Soft Focus Lens (HS)*<br><small>*NOT AVAILABLE WITH FIXED FIXTURES. 16W MAX</small><br><b>N</b> No Lens (NL)*<br><small>*NOT AVAILABLE WITH WARM DIM</small> |  |
|                  | FS Fixed Shallow Regress      | A 6W Static White, 795lm (06A)  | 1 15° (15)*<br><small>*NOT AVAILABLE WITH WARM DIM</small>                  |  |  |
|                  | WW Wallwash                   | F 11W Static White, 1279lm (11A)  | 2 20° (20)  |  |  |
|                  |                               | L 15W Static White, 1729lm (15A)  | 3 25° (25)  |  |  |
|                  |                               | T 21W Static White, 2435lm (21A)  | 4 40° (40)  |  |  |
|                  |                               | H 11W Warm Dim (11A)<br>WL 2600K - 1800K: 757lm<br>WD 2900K - 1800K: 766lm        | 6 60° (60)  |  |  |
|                  |                               | O 15W Warm Dim (15A)<br>WL 2700K - 1800K: 1046lm<br>WD 3000K - 1800K: 1071lm      | 8 85° (85)*<br><small>*REQUIRES FOR 7° WIDE DISTRIBUTION LENS</small>       |  |  |
|                  |                               | R 17W Tunable White (17A)<br>TR 4000K - 1800K: 1235lm<br>TH 5000K - 2700K: 1231lm | W Wallwash (WW)<br>PERFORMANCE REFLECT 80+CRI / 3000K PAIRED WITH 20° OPTIC |  |  |
|                  | 2                             | AD Adjustable Deep Regress  | D 9W 10° Static White, 363lm (09H)  |  | N 10° (10)   |
|                  |                               | FD Fixed Deep Regress   | B 6W Static White, 524lm (06D)  |  | 1 15° (15)*<br><small>*NOT AVAILABLE WITH WARM DIM</small> |
|                  |                               | G 11W Static White, 842lm (11D)   | 2 25° (25)  |  |  |
|                  |                               | M 15W Static White, 1138lm (15D)  | 3 35° (35)  |  |  |
|                  |                               | S 19W Static White, 1537lm (19D)  | 5 50° (50)  |  |  |
|                  |                               | I 11W Warm Dim (11D)<br>WL 2600K - 1800K: 489lm<br>WD 2900K - 1800K: 495lm        | 8 80° (80)*<br><small>*REQUIRES FOR 7° WIDE DISTRIBUTION LENS</small>       |  |  |
|                  |                               | Q 15W Warm Dim (16D)<br>WL 2700K - 1800K: 684lm<br>WD 3000K - 1800K: 693lm        | PERFORMANCE REFLECT 80+CRI / 3000K PAIRED WITH 50° OPTIC                    |  |  |
|                  |                               | E 10W Tunable White (10D)<br>TR 4000K - 1800K: 746lm<br>TH 5000K - 2700K: 657lm   |   |  |  |

| FIXTURE LAYOUT / CONTROL ZONES |                          |
|--------------------------------|--------------------------|
|                                | ① = ZONE 1<br>② = ZONE 2 |
| A                              | ①                        |
| B                              | ① ①                      |
| C                              | ① ②                      |
| D                              | ① ① ①                    |
| E                              | ① ① ②                    |
| F                              | ① ② ②                    |
| G                              | ① ② ①                    |
| H                              | ② ① ②                    |
| I                              | ① ① ① ①                  |
| J                              | ① ① ② ②                  |
| K                              | ① ② ① ②                  |
| L                              | ① ② ② ①                  |
| M                              | ② ① ① ②                  |

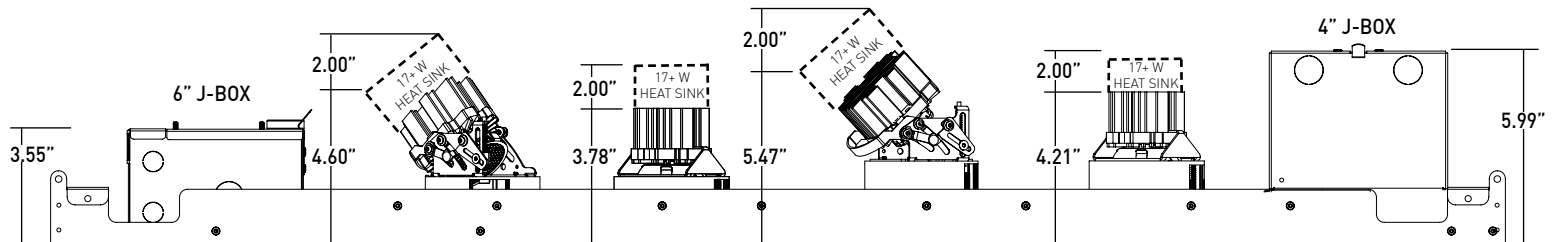


ADJUSTABLE  
SHALLOW REGRESS

FIXED / WALLWASH  
SHALLOW REGRESS

ADJUSTABLE  
DEEP REGRESS

FIXED / WALLWASH  
DEEP REGRESS



|               |       |
|---------------|-------|
| PROJECT NAME: | TYPE: |
|---------------|-------|

## ACCESSORIES

### ROUND / SQUARE TRANSITIONAL SHALLOW MEDIA

- HCL-F3RS** Honeycomb Louver\*  
\*(NOT AVAILABLE WITH ADJUSTABLE FIXTURE OR WARM DIM)
- CGL-F3RS** Clear Glass Lens\*  
\*(NOT AVAILABLE WITH WARM DIM)
- FGL-F3RS** Frosted Glass Lens
- SFL-F3RS** Soft Focus Lens
- FSFL-F3RS** Frosted Soft Focus Lens
- WDL-F3RS** Wide Distribution Lens\*  
\*(REQUIRED AND ONLY AVAILABLE WITH 8 (80°) OPTIC)
- FLSL-F3RS** Frosted Linear Spread Lens

### ROUND / SQUARE TRANSITIONAL DEEP MEDIA

- HCL-F3RD** Honeycomb Louver\*  
\*(NOT AVAILABLE WITH ADJUSTABLE FIXTURE OR WARM DIM)
- CGL-F3RD** Clear Glass Lens\*  
\*(NOT AVAILABLE WITH WARM DIM)
- FGL-F3RD** Frosted Glass Lens
- SFL-F3RD** Soft Focus Lens
- FSFL-F3RD** Frosted Soft Focus Lens
- WDL-F3RD** Wide Distribution Lens\*  
\*(REQUIRED AND ONLY AVAILABLE WITH 8 (80°) OPTIC)
- FLSL-F3RD** Frosted Linear Spread Lens

### REPLACEMENT BAFFLE ASSEMBLY (INCLUDES MEDIA)

| ASSEMBLY                          | SHAPE  | RATING             | FINISH   | MEDIA   |
|-----------------------------------|--|--------------------|--|---|
| <b>RBA</b>                        |  | <b>1</b>           |  |   |
| REPLACEMENT<br>BAFFLE<br>ASSEMBLY | <b>F3RS</b> Round Shallow Regress<br><b>F3RW</b> Round Wallwash<br><b>F3SS</b> Square Shallow Regress<br><b>F3SW</b> Square Wallwash<br><b>F3TS</b> Square Transitional Shallow Regress<br><b>F3RD</b> Round Deep Regress<br><b>F3SD</b> Square Deep Regress<br><b>F3TD</b> Square Transitional Deep Regress | 1 IP20<br>Dry/Damp | <b>WH</b> White<br><b>AB</b> Architectural Bronze<br><b>AG</b> Satin Silver<br><b>AU</b> Cashmere Gold<br><b>BB</b> Burnt Bronze<br><b>BK</b> Black<br><b>PR</b> Primer<br><b>CF</b> Custom Finish*<br><small>*(CONSULT FACTORY)</small> | LEAVE BLANK FOR SOFT FOCUS LENS (SFL)<br><b>HCL</b> Honeycomb Louver*<br><small>*(NOT AVAILABLE WITH ADJUSTABLE FIXTURES OR WARM DIM)</small><br><b>CGL</b> Clear Glass Lens*<br><small>*(NOT AVAILABLE WITH WARM DIM)</small><br><b>FGL</b> Frosted Glass Lens<br><b>FSFL</b> Frosted Soft Focus Lens<br><b>FLSL</b> Frosted Linear Spread Lens<br><b>WDL</b> Wide Distribution Lens*<br><small>*(REQUIRED AND ONLY AVAILABLE WITH 8 (85°) OPTIC)</small><br><b>NL</b> No Lens*<br><small>*(NOT AVAILABLE WITH WARM DIM)</small> |

### SQUARE SHALLOW MEDIA

- HCL-F3SS** Honeycomb Louver\*  
\*(NOT AVAILABLE WITH ADJUSTABLE FIXTURE OR WARM DIM)
- CGL-F3SS** Clear Glass Lens\*  
\*(NOT AVAILABLE WITH WARM DIM)
- FGL-F3SS** Frosted Glass Lens
- SFL-F3SS** Soft Focus Lens
- FSFL-F3SS** Frosted Soft Focus Lens
- WDL-F3SS** Wide Distribution Lens\*  
\*(REQUIRED AND ONLY AVAILABLE WITH 8 (80°) OPTIC)
- FLSL-F3SS** Frosted Linear Spread Lens

### SQUARE DEEP MEDIA

- HCL-F3SD** Honeycomb Louver\*  
\*(NOT AVAILABLE WITH ADJUSTABLE FIXTURE OR WARM DIM)
- CGL-F3SD** Clear Glass Lens\*  
\*(NOT AVAILABLE WITH WARM DIM)
- FGL-F3SD** Frosted Glass Lens
- SFL-F3SD** Soft Focus Lens
- FSFL-F3SD** Frosted Soft Focus Lens
- WDL-F3SD** Wide Distribution Lens\*  
\*(REQUIRED AND ONLY AVAILABLE WITH 8 (80°) OPTIC)
- FLSL-F3SD** Frosted Linear Spread Lens

### ADJUSTABLE SHALLOW HCL ASSEMBLY

- OLR-F3RS1-SFL-HCL**  
Adjustable Honeycomb Louver and Soft Focus Lens\*  
\*(NOT AVAILABLE WITH FIXED FIXTURES. 15W MAX)

### ADJUSTABLE DEEP HCL ASSEMBLY

- OLR-F3RD1-SFL-HCL**  
Adjustable Honeycomb Louver and Soft Focus Lens\*  
\*(NOT AVAILABLE WITH FIXED FIXTURES. 16W MAX)

### 9/16" T-GRID ACCESSORY

- Required for 9/16" T-Grid installation
- PANEL-BRACKET**

### SHALLOW REGRESS / WALLWASH REPLACEMENT OPTICS

Interchangeable optics accessible through fixture aperture.

#### STATIC WHITE

- RO-50-15-S** 15° optic
- RO-50-20-S** 20° optic
- RO-50-25-S** 25° optic
- RO-50-40-S** 40° optic
- RO-50-60-S** 60° optic
- RO-45-WW-S** Wallwash optic

#### WARM DIM

- RO-50-20-W** 20° optic
- RO-50-25-W** 25° optic
- RO-50-40-W** 40° optic
- RO-50-60-W** 60° optic
- RO-45-WW-W** Wallwash optic

#### TUNABLE WHITE

- RO-50-15-T** 15° optic
- RO-50-20-T** 20° optic
- RO-50-25-T** 25° optic
- RO-50-40-T** 40° optic
- RO-45-WW-T** Wallwash optic

### DEEP REGRESS REPLACEMENT OPTICS

Interchangeable optics accessible through fixture aperture.

#### STATIC WHITE

- RO-35-15-S** 15° optic
- RO-35-25-S** 25° optic
- RO-35-35-S** 35° optic
- RO-35-50-S** 50° optic

#### WARM DIM

- RO-35-25-W** 25° optic
- RO-35-35-W** 35° optic
- RO-35-50-W** 50° optic

#### TUNABLE WHITE

- RO-35-15-T** 15° optic
- RO-35-25-T** 25° optic
- RO-35-35-T** 35° optic
- RO-35-50-T** 50° optic

|               |       |
|---------------|-------|
| PROJECT NAME: | TYPE: |
|---------------|-------|

## SHALLOW REGRESS PERFORMANCE - 3000K

| LUMEN PACKAGE    | WATT-AGE | 10° OPTIC FIELD REDUCER KIT |     | 15° OPTIC SOFT FOCUS LENS |     | 20° OPTIC SOFT FOCUS LENS |     | 25° OPTIC SOFT FOCUS LENS |     | 40° OPTIC SOFT FOCUS LENS |     | 60° OPTIC SOFT FOCUS LENS |     | 85° OPTIC WIDE DISTRIBUTION |     | WW OPTIC WALLWASH LENS |     |
|------------------|----------|-----------------------------|-----|---------------------------|-----|---------------------------|-----|---------------------------|-----|---------------------------|-----|---------------------------|-----|-----------------------------|-----|------------------------|-----|
|                  |          | DLVD                        | LPW | DLVD                      | LPW | DLVD                      | LPW | DLVD                      | LPW | DLVD                      | LPW | DLVD                      | LPW | DLVD                        | LPW | DLVD                   | LPW |
| 80S06A           | 06       | -                           | -   | 740                       | 110 | 795                       | 123 | 779                       | 120 | 678                       | 113 | 727                       | 121 | 640                         | 92  | 634                    | 106 |
| 80S11A           | 11       | -                           | -   | 1190                      | 97  | 1279                      | 108 | 1254                      | 106 | 1090                      | 99  | 1169                      | 106 | 954                         | 80  | 1020                   | 93  |
| 80S15A / C       | 15       | 633                         | 42  | 1608                      | 96  | 1729                      | 107 | 1694                      | 105 | 1474                      | 98  | 1580                      | 105 | 1289                        | 80  | 1378                   | 92  |
| 80S21A           | 21       | -                           | -   | 2290                      | 97  | 2435                      | 107 | 2386                      | 105 | 2075                      | 99  | 2226                      | 106 | 1740                        | 77  | 1861                   | 89  |
| 90S06A           | 06       | -                           | -   | 635                       | 95  | 683                       | 105 | 669                       | 103 | 582                       | 97  | 624                       | 104 | 509                         | 79  | 545                    | 91  |
| 90S11A           | 11       | -                           | -   | 1022                      | 83  | 1099                      | 93  | 1077                      | 91  | 937                       | 85  | 1005                      | 91  | 820                         | 69  | 876                    | 80  |
| 90S15A / C       | 15       | 544                         | 36  | 1381                      | 82  | 1485                      | 92  | 1455                      | 90  | 1266                      | 84  | 1358                      | 91  | 1107                        | 68  | 1184                   | 79  |
| 90S21A           | 21       | -                           | -   | 1938                      | 82  | 2092                      | 92  | 2050                      | 90  | 1783                      | 85  | 1912                      | 91  | 1495                        | 66  | 1598                   | 76  |
| 97S06A           | 06       | -                           | -   | 558                       | 83  | 600                       | 93  | 588                       | 91  | 511                       | 85  | 548                       | 91  | 447                         | 69  | 478                    | 80  |
| 97S11A           | 11       | -                           | -   | 898                       | 73  | 965                       | 81  | 946                       | 80  | 822                       | 75  | 882                       | 75  | 720                         | 61  | 769                    | 70  |
| 97S15A / C       | 15       | 469                         | 31  | 1213                      | 72  | 1304                      | 80  | 1278                      | 79  | 1111                      | 74  | 1192                      | 79  | 972                         | 60  | 1040                   | 69  |
| 97S21A           | 21       | -                           | -   | 1701                      | 72  | 1837                      | 81  | 1800                      | 79  | 1565                      | 75  | 1679                      | 80  | 1313                        | 58  | 1403                   | 67  |
| 90W11A (26K-18K) | 11       | -                           | -   | -                         | -   | 757                       | 69  | 707                       | 64  | 688                       | 63  | 698                       | 63  | 530                         | 48  | 592                    | 54  |
| 90W11A (29K-18K) | 11       | -                           | -   | -                         | -   | 772                       | 70  | 721                       | 66  | 702                       | 64  | 712                       | 65  | 541                         | 49  | 600                    | 55  |
| 90W15A (27K-18K) | 15       | -                           | -   | -                         | -   | 1046                      | 70  | 988                       | 66  | 960                       | 64  | 981                       | 65  | 746                         | 50  | 841                    | 56  |
| 90W15A (30K-18K) | 15       | -                           | -   | -                         | -   | 1071                      | 71  | 1020                      | 68  | 993                       | 66  | 1030                      | 69  | 783                         | 52  | 852                    | 57  |
| 90T17A (50K-27K) | 17       | -                           | -   | 1082                      | 62  | 1231                      | 69  | 1217                      | 68  | 1241                      | 63  | 1249                      | 68  | 1005                        | 51  | 1009                   | 59  |
| 90T17A (40K-18K) | 17       | -                           | -   | 1086                      | 62  | 1235                      | 69  | 1221                      | 68  | 1245                      | 64  | 1254                      | 68  | 1008                        | 52  | 1012                   | 60  |

### MAX UNIFIED GLARE RATING

| 10° OPTIC NO LENS | 15° OPTIC SOFT FOCUS LENS | 20° OPTIC SOFT FOCUS LENS | 25° OPTIC SOFT FOCUS LENS | 40° OPTIC SOFT FOCUS LENS | 60° OPTIC SOFT FOCUS LENS | 85° OPTIC WIDE DISTRIBUTION | WW OPTIC WALLWASH LENS |
|-------------------|---------------------------|---------------------------|---------------------------|---------------------------|---------------------------|-----------------------------|------------------------|
| 4-10              | 13-22                     | 10-13                     | 13-16                     | 13-19                     | 19-22                     | 25-28                       | 25-29                  |

\*UGR values reflect white baffle and vary based on wattage, lower UGR values available with different finishes.

### OUTPUT MULTIPLIER

| CCT   | CCT SCALE |
|-------|-----------|
| 2400K | 0.85      |
| 2700K | 0.97      |
| 3000K | 1.00      |
| 3500K | 1.03      |
| 4000K | 1.08      |

### TUNABLE WHITE MULTIPLIER

| CCT   | 5000K-2700K | 4000K-1800K |
|-------|-------------|-------------|
| 5000K | 1.16        | -           |
| 4000K | 1.08        | 1.14        |
| 3500K | 1.04        | 1.07        |
| 3000K | 1.00        | 1.00        |
| 2700K | 0.96        | 0.92        |
| 2400K | -           | 0.84        |
| 1800K | -           | 0.69        |

### MEDIA LIGHT LOSS FACTOR

| MEDIA   | LIGHT LOSS FACTOR |
|---------|-------------------|
| NO LENS | 1.06              |
| CGL     | 1.00              |
| SFL     | 1.00              |
| FGL     | 0.89              |
| FSFL    | 0.81              |
| FLSL    | 0.82              |

# PANELUX™ FRAXION®3

|               |       |
|---------------|-------|
| PROJECT NAME: | TYPE: |
|---------------|-------|

## DEEP REGRESS PERFORMANCE - 3000K

| LUMEN PACKAGE    | WATT-AGE | 10° OPTIC FIELD REDUCER KIT |     | 15° OPTIC SOFT FOCUS LENS |     | 25° OPTIC SOFT FOCUS LENS |     | 35° OPTIC SOFT FOCUS LENS |     | 50° OPTIC SOFT FOCUS LENS |     | 80° OPTIC SOFT FOCUS LENS |     |
|------------------|----------|-----------------------------|-----|---------------------------|-----|---------------------------|-----|---------------------------|-----|---------------------------|-----|---------------------------|-----|
|                  |          | DLVD                        | LPW | DLVD                      | LPW | DLVD                      | LPW | DLVD                      | LPW | DLVD                      | LPW | DLVD                      | LPW |
| 80S06D           | 06       | -                           | -   | 527                       | 88  | 524                       | 87  | 477                       | 80  | 500                       | 83  | 430                       | 72  |
| 80S09H           | 09       | 363                         | 33  | -                         | -   | -                         | -   | -                         | -   | -                         | -   | -                         | -   |
| 80S11D           | 11       | -                           | -   | 848                       | 77  | 842                       | 77  | 768                       | 70  | 805                       | 73  | 692                       | 63  |
| 80S15D           | 15       | -                           | -   | 1129                      | 75  | 1138                      | 76  | 1038                      | 69  | 1087                      | 72  | 935                       | 62  |
| 80S19D           | 19       | -                           | -   | 1548                      | 74  | 1537                      | 73  | 1401                      | 67  | 1468                      | 70  | 1263                      | 60  |
| 90S06D           | 06       | -                           | -   | 446                       | 74  | 443                       | 74  | 404                       | 67  | 423                       | 71  | 364                       | 61  |
| 90S09H           | 09       | 312                         | 35  | -                         | -   | -                         | -   | -                         | -   | -                         | -   | -                         | -   |
| 90S11D           | 11       | -                           | -   | 718                       | 65  | 713                       | 65  | 650                       | 59  | 681                       | 62  | 585                       | 53  |
| 90S15D           | 15       | -                           | -   | 970                       | 65  | 963                       | 64  | 878                       | 59  | 920                       | 61  | 791                       | 63  |
| 90S19D           | 19       | -                           | -   | 1310                      | 62  | 1300                      | 62  | 1185                      | 56  | 1242                      | 59  | 1068                      | 51  |
| 95S06D           | 06       | -                           | -   | 396                       | 66  | 393                       | 66  | 358                       | 60  | 375                       | 63  | 323                       | 54  |
| 95S09H           | 09       | 269                         | 18  | -                         | -   | -                         | -   | -                         | -   | -                         | -   | -                         | -   |
| 95S11D           | 11       | -                           | -   | 637                       | 58  | 632                       | 57  | 576                       | 52  | 604                       | 55  | 519                       | 47  |
| 95S15D           | 15       | -                           | -   | 861                       | 57  | 854                       | 57  | 779                       | 52  | 816                       | 54  | 702                       | 47  |
| 95S19D           | 19       | -                           | -   | 1162                      | 55  | 1153                      | 55  | 1052                      | 50  | 1102                      | 52  | 948                       | 45  |
| 90W11D (26K-18K) | 11       | -                           | -   | -                         | -   | 489                       | 44  | 446                       | 41  | 467                       | 42  | 402                       | 37  |
| 90W11D (29K-18K) | 11       | -                           | -   | -                         | -   | 495                       | 45  | 451                       | 41  | 473                       | 43  | 407                       | 37  |
| 90W16D (27K-18K) | 16       | -                           | -   | -                         | -   | 684                       | 43  | 623                       | 39  | 653                       | 41  | 562                       | 35  |
| 90W16D (30K-18K) | 16       | -                           | -   | -                         | -   | 693                       | 43  | 632                       | 40  | 662                       | 41  | 570                       | 36  |
| 90T10D (50K-27K) | 10       | -                           | -   | 662                       | 66  | 657                       | 66  | 586                       | 59  | 623                       | 62  | 674                       | 67  |
| 90T10D (40K-18K) | 10       | -                           | -   | 752                       | 75  | 746                       | 75  | 667                       | 67  | 708                       | 71  | 766                       | 77  |

\*LIN-TO-LIN 0-10V pairing not compatible with Warm Dim or Tunable White.

### MAX UNIFIED GLARE RATING

| 10° OPTIC NO LENS | 15° OPTIC SOFT FOCUS LENS | 20° OPTIC SOFT FOCUS LENS | 35° OPTIC SOFT FOCUS LENS | 50° OPTIC SOFT FOCUS LENS | 80° OPTIC WIDE DISTRIBUTION |
|-------------------|---------------------------|---------------------------|---------------------------|---------------------------|-----------------------------|
| 1-10              | 10-13                     | 10-13                     | 13-16                     | 16-19                     | 22-25                       |

\*UGR values reflect white baffle and vary based on wattage, lower UGR values available with different finishes.

### OUTPUT MULTIPLIER

| CCT   | CCT SCALE |
|-------|-----------|
| 2400K | 0.85      |
| 2700K | 0.97      |
| 3000K | 1.00      |
| 3500K | 1.03      |
| 4000K | 1.08      |

### TUNABLE WHITE MULTIPLIER

| CCT   | 5000K-2700K | 4000K-1800K |
|-------|-------------|-------------|
| 5000K | 1.16        | -           |
| 4000K | 1.08        | 1.14        |
| 3500K | 1.04        | 1.07        |
| 3000K | 1.00        | 1.00        |
| 2700K | 0.96        | 0.92        |
| 2400K | -           | 0.84        |
| 1800K | -           | 0.69        |

### MEDIA LIGHT LOSS FACTOR

| MEDIA   | LIGHT LOSS FACTOR |
|---------|-------------------|
| NO LENS | 1.06              |
| CGL     | 1.00              |
| SFL     | 1.00              |
| FGL     | 0.89              |
| FSFL    | 0.81              |
| FLSL    | 0.82              |



|               |       |
|---------------|-------|
| PROJECT NAME: | TYPE: |
|---------------|-------|

## SHALLOW REGRESS WARM DIM PERFORMANCE - 20° OPTIC - SOFT FOCUS LENS

INCANDESCENT PROFILE

| 90W10AL<br>2600K - 1800K | Full on<br>100% | Dimmed<br>to 80% | Dimmed<br>to 70% | Dimmed<br>to 50% | Dimmed<br>to 20% | Dimmed<br>to 10% | Dimmed<br>to 2% |
|--------------------------|-----------------|------------------|------------------|------------------|------------------|------------------|-----------------|
| CCT (K)                  | 2600            | 2550             | 2520             | 2450             | 2200             | 1925             | 1800            |
| Light Output (Lm)        | 757             | 605              | 529              | 378              | 151              | 75               | 15              |
| Power (W)                | 10              | 8                | 7                | 5                | 2                | 1                | .2              |
| Efficacy (LPW)           | 69              | 69               | 69               | 69               | 69               | 69               | 69              |

| 90W15AL<br>2700K - 1800K | Full on<br>100% | Dimmed<br>to 80% | Dimmed<br>to 70% | Dimmed<br>to 50% | Dimmed<br>to 20% | Dimmed<br>to 10% | Dimmed<br>to 2% |
|--------------------------|-----------------|------------------|------------------|------------------|------------------|------------------|-----------------|
| CCT (K)                  | 2700            | 2650             | 2620             | 2520             | 2180             | 1950             | 1800            |
| Light Output (Lm)        | 1046            | 836              | 732              | 523              | 209              | 104              | 20              |
| Power (W)                | 15              | 12               | 10.5             | 7.5              | 3                | 1.5              | 0.3             |
| Efficacy (LPW)           | 70              | 70               | 70               | 70               | 70               | 70               | 70              |

HALOGEN PROFILE

| 90W10AD<br>2900K - 1800K | Full on<br>100% | Dimmed<br>to 80% | Dimmed<br>to 70% | Dimmed<br>to 50% | Dimmed<br>to 20% | Dimmed<br>to 10% | Dimmed<br>to 2% |
|--------------------------|-----------------|------------------|------------------|------------------|------------------|------------------|-----------------|
| CCT (K)                  | 2900            | 2850             | 2800             | 2720             | 2350             | 1975             | 1800            |
| Light Output (Lm)        | 772             | 617              | 540              | 386              | 154              | 77               | 15              |
| Power (W)                | 10              | 8                | 7                | 5                | 2                | 1                | .2              |
| Efficacy (LPW)           | 70              | 70               | 70               | 70               | 70               | 70               | 70              |

| 90W15AD<br>3000K - 1800K | Full on<br>100% | Dimmed<br>to 80% | Dimmed<br>to 70% | Dimmed<br>to 50% | Dimmed<br>to 20% | Dimmed<br>to 10% | Dimmed<br>to 2% |
|--------------------------|-----------------|------------------|------------------|------------------|------------------|------------------|-----------------|
| CCT (K)                  | 3000            | 2950             | 2920             | 2775             | 2375             | 2000             | 1800            |
| Light Output (Lm)        | 1071            | 856              | 749              | 535              | 214              | 107              | 21              |
| Power (W)                | 15              | 12               | 10.5             | 7.5              | 3                | 1.5              | 0.3             |
| Efficacy (LPW)           | 71              | 71               | 71               | 71               | 71               | 71               | 71              |

## DEEP REGRESS WARM DIM PERFORMANCE - 20° OPTIC - SOFT FOCUS LENS

INCANDESCENT PROFILE

| 90W11DWL<br>2700K - 1800K | Full on<br>100% | Dimmed<br>to 80% | Dimmed<br>to 70% | Dimmed<br>to 50% | Dimmed<br>to 20% | Dimmed<br>to 10% | Dimmed<br>to 2% |
|---------------------------|-----------------|------------------|------------------|------------------|------------------|------------------|-----------------|
| CCT (K)                   | 2600            | 2550             | 2520             | 2450             | 2200             | 1925             | 1800            |
| Light Output (Lm)         | 489             | 391              | 342              | 244              | 97               | 48               | 9.7             |
| Power (W)                 | 11              | 8.8              | 7.7              | 5.5              | 2.2              | 1.1              | 0.22            |
| Efficacy (LPW)            | 44              | 44               | 44               | 44               | 44               | 44               | 44              |

| 90W11DWL<br>2700K - 1800K | Full on<br>100% | Dimmed<br>to 80% | Dimmed<br>to 70% | Dimmed<br>to 50% | Dimmed<br>to 20% | Dimmed<br>to 10% | Dimmed<br>to 2% |
|---------------------------|-----------------|------------------|------------------|------------------|------------------|------------------|-----------------|
| CCT (K)                   | 2700            | 2650             | 2620             | 2520             | 2180             | 1950             | 1800            |
| Light Output (Lm)         | 684             | 547              | 478              | 342              | 136              | 68               | 13              |
| Power (W)                 | 16              | 12.8             | 11.2             | 8.0              | 3.2              | 1.6              | 0.32            |
| Efficacy (LPW)            | 43              | 43               | 43               | 43               | 43               | 43               | 43              |

HALOGEN PROFILE

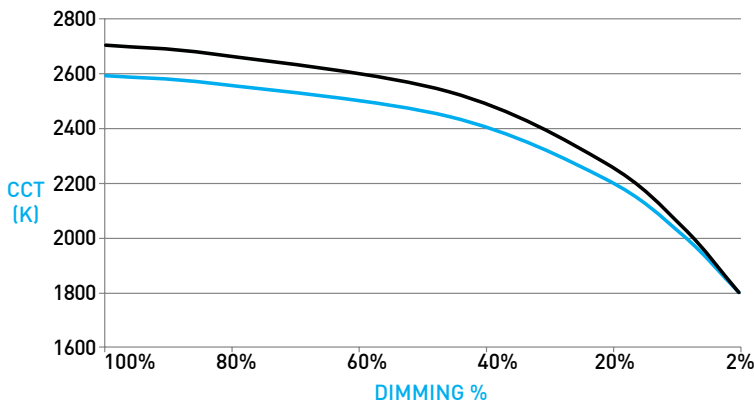
| 90W11DWD<br>3000K - 1800K | Full on<br>100% | Dimmed<br>to 80% | Dimmed<br>to 70% | Dimmed<br>to 50% | Dimmed<br>to 20% | Dimmed<br>to 10% | Dimmed<br>to 2% |
|---------------------------|-----------------|------------------|------------------|------------------|------------------|------------------|-----------------|
| CCT (K)                   | 2900            | 2850             | 2800             | 2720             | 2350             | 1975             | 1800            |
| Light Output (Lm)         | 495             | 396              | 346              | 247              | 99               | 49               | 9.9             |
| Power (W)                 | 11              | 8.8              | 7.7              | 5.5              | 2.2              | 1.1              | 0.22            |
| Efficacy (LPW)            | 45              | 45               | 45               | 45               | 45               | 45               | 45              |

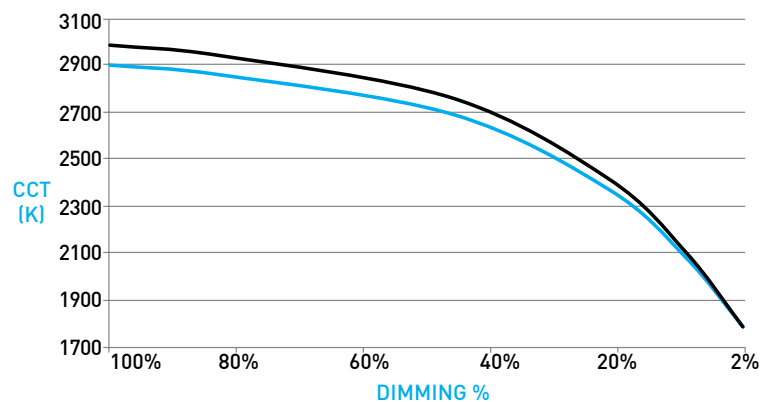
| 90W16DWD<br>3000K - 1800K | Full on<br>100% | Dimmed<br>to 80% | Dimmed<br>to 70% | Dimmed<br>to 50% | Dimmed<br>to 20% | Dimmed<br>to 10% | Dimmed<br>to 2% |
|---------------------------|-----------------|------------------|------------------|------------------|------------------|------------------|-----------------|
| CCT (K)                   | 3000            | 2950             | 2920             | 2775             | 2375             | 2000             | 1800            |
| Light Output (Lm)         | 693             | 554              | 485              | 346              | 138              | 69               | 13              |
| Power (W)                 | 16              | 12.8             | 11.2             | 8.0              | 3.2              | 1.6              | 0.32            |
| Efficacy (LPW)            | 43              | 43               | 43               | 43               | 43               | 43               | 43              |

## WARM DIM DIMMING CURVES

10W & 11W / 15W & 16W



10W & 11W / 15W & 16W



# PANELUX™ FRAXION®3

|               |       |
|---------------|-------|
| PROJECT NAME: | TYPE: |
|---------------|-------|

## COMPONENT DRAWINGS / DIMENSIONS

### A ADJUSTABILITY

Hot-aim tilt up to 40° and 361° rotation with Philips screwdriver, features 5° tilt increment indicators. Sliding pivot point optimizes center beam, ensuring unclipped beam of 15° at 40° tilt and 25° at 30° tilt.

### B SHALLOW REGRESS OPTIC

Robust light engine with optimized optic pairing integrates Reflection, Refraction, and TIR offering wallwash, 10°, 15°, 20°, 25°, 40° & 60° beams.

### DEEP REGRESS OPTIC

Robust light engine with optimized optic pairing integrates Reflection, Refraction, and TIR offering wallwash, 10°, 15°, 25°, 35°, & 50° beams.

### C 10° FIELD REDUCER

Provided with 10° optic. Pairs Soft Focus Lens, Field Reducer, and Honeycomb Louver to deliver tight 10° beam while reducing field angle by 30%.

### D ADJUSTABLE HCL ASSEMBLY

Honeycomb Louver and Soft Focus Lens attach directly to optic with clip-on lens retainer and adjusts with fixture. Only compatible with no lens baffle. Specified as "H" Effects Device

### E EFFECTS DEVICES / LENS RETAINER

Fixture is limited to 1 effects device installed on the baffle, see Section E for Adjustable HCL assembly. Lens retainer allows effects devices to be changed in Dry / Damp locations.

### F SHALLOW REGRESS ROUND / SQUARE BAFFLE

Die-cast removable baffle provides easy access to adjustment mechanisms for tilt and rotation. Features 64° glare cutoff, minimizing aperture glare and concealing view into housing. Includes gasket, mitigating light leak.

### SHALLOW REGRESS SQUARE TRANSITIONAL BAFFLE

Transitions from square aperture at ceiling to round aperture at light source. Die-cast removable baffle provides easy access to adjustment mechanisms for tilt and rotation. Features 64° glare cutoff, minimizing aperture glare and concealing view into housing. Includes gasket, mitigating light leak.

### G DEEP REGRESS ROUND / SQUARE BAFFLE

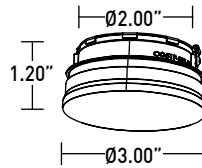
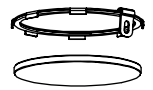
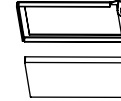
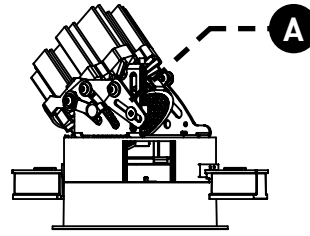
Die-cast removable baffle provides easy access to adjustment mechanisms for tilt and rotation. Features 60° glare cutoff, minimizing aperture glare and concealing view into housing. Includes gasket, mitigating light leak.

### DEEP REGRESS SQUARE TRANSITIONAL BAFFLE

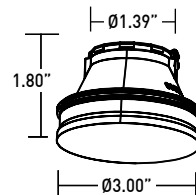
Transitions from square aperture at ceiling to round aperture at light source. Die-cast removable baffle provides easy access to adjustment mechanisms for tilt and rotation. Features 60° glare cutoff, minimizing aperture glare and concealing view into housing. Includes gasket, mitigating light leak.

### H WALLWASH BAFFLE / MEDIA

Die-cast baffle with angled wide aperture for enhanced uniformity. Features asymmetrical spread lens, sealed in place, combined with auxiliary reflector for optimum performance. Includes gasket, mitigating light leak, and Suction Tool to accommodate baffle removal.



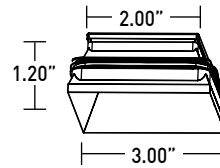
ROUND



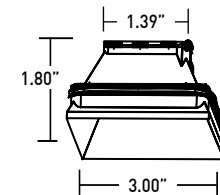
ROUND



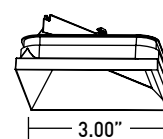
Ø3.00"



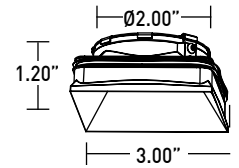
SQUARE



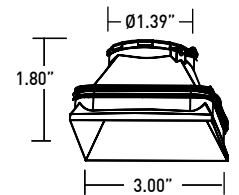
SQUARE



3.00"



SQUARE TRANSITIONAL



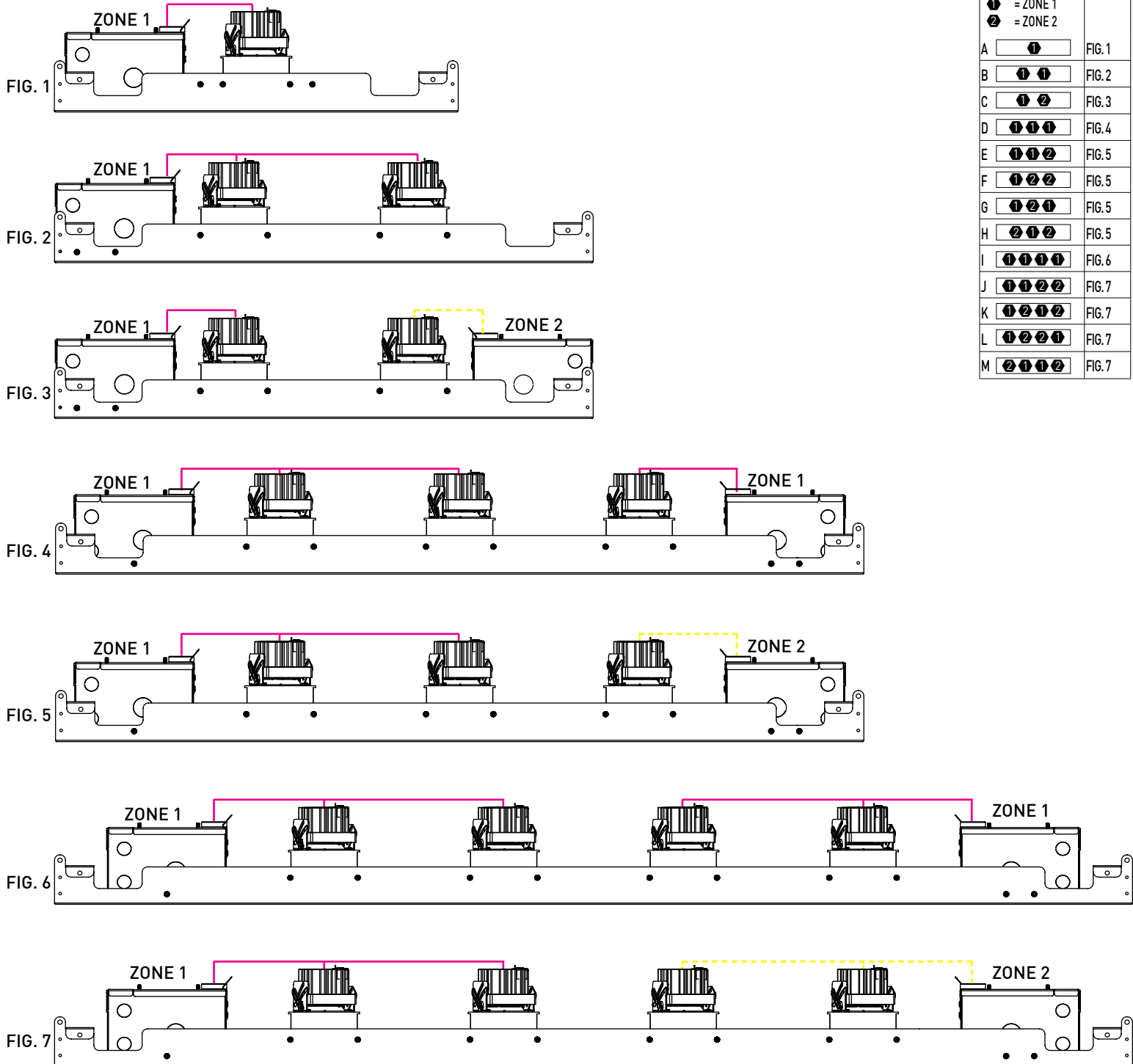
SQUARE TRANSITIONAL

# PANELUX™ FRAXION®3

|               |       |
|---------------|-------|
| PROJECT NAME: | TYPE: |
|---------------|-------|

## DRIVER / ZONE CONTROL GUIDE

Fixtures ship pre-wired to drivers based on fixture layout / control zone specification. Each driver requires connections to mains voltage and controls as applies. Not all layouts shown, for reference only.



# PANELUX™ FRAXION®3

|               |       |
|---------------|-------|
| PROJECT NAME: | TYPE: |
|---------------|-------|

## TECHNICAL

### CONSTRUCTION

**Downlight:** Painted finishes are granulated powder coat. Forged aluminum heat-sink.

**Panel:** Aluminum and 22 Gauge galvanized steel.

**Power Supply:** 22 Gauge galvanized steel.

### STATIC WHITE LED

2-step MacAdam ellipse LED module available in 80+, 90+ and 97+ CRI configurations in color temperatures of 2700K, 3000K, 3500K and 4000K. 3-step MacAdam ellipse LED module available in 90+ CRI configuration in color temperature of 2400K. Average rated lamp life of 50,000 hours. LED and driver assemblies are field-replaceable.

### WARM DIM LED

3-step MacAdam ellipse warm dim LED module available in 90+ CRI configuration. 3000K or 2700K at full brightness, warming to 1800K at full dim. Average rated lamp life of 50,000 hours. LED and driver assemblies are field-replaceable.

### TUNABLE WHITE LED

3-step MacAdam ellipse tunable white LED module available in 90+ CRI configuration. Features tuning ranges of 1800K to 4000K and 2700K to 5000K. Average rated lamp life of 50,000 hours. LED and driver assemblies are field-replaceable.

### POWER SUPPLY PERFORMANCE AND DIMMING INFORMATION

| Power Supply | 0-10V  |        |        |        |        | ECO   | DALI-2 |        | ATHENA |       | CASAMBI |        |
|--------------|--------|--------|--------|--------|--------|-------|--------|--------|--------|-------|---------|--------|
|              | SG3    | SN3    | EG1    | EN1    | DG1    | LP1   | ED1    | DD2    | AS1    | AD1   | CS1     | CD1    |
| Minimum °C   | -20 °C | -20 °C | -20 °C | -20 °C | -20 °C | 0 °C  | -20 °C | -20 °C | 0 °C   | 0 °C  | -20 °C  | -20 °C |
| Maximum °C   | 40 °C  | 40 °C  | 40 °C  | 40 °C  | 40 °C  | 40 °C | 40 °C  | 40 °C  | 40 °C  | 40 °C | 40 °C   | 40 °C  |
| Dimming %    | 1.0%   | 1.0%   | 0.1%   | 0.1%   | 0.1%   | 0.1%  | 0.1%   | 0.1%   | 0.1%   | 0.1%  | 0.1%    | 0.1%   |

Note: For LP1, EG1 and EN1 drivers consult chart on page x to confirm appropriate dimming curve for compatibility with selected control.

### WALLWASH SPACING

Recommended fixture spacing is 36" (914mm) on center with 36" (914mm) setback from wall plane.

### LISTING

UL listed to UL1598 standard for Dry / Damp locations.  
NEMA 410 Compliant.

### BUY AMERICAN ACT

All Panelux™ Fraxion®3 configurations are Buy American Act compliant.

### DECLARE

LBC Red List Approved.

### WEIGHT

3.50lbs per foot.

## SETBACKS

- Minimum 0.50" setback from combustible and non-combustible materials on all sides and top of housing.
- Minimum 3.00" setback from insulation material having max R-Value 30 on all sides and top of housing.
- Minimum 6.00" setback from polycell spray foam insulation having max R-Value 60.

## LIMITED WARRANTY

Manufacturer's Limited Warranty guarantees product(s) listed to be free from defects in material and workmanship under normal use and service for 1-year. LED and power supplies are warranted to operate with 70% of original flux and remain within a range of 3 duv for a period of 5-years. 10-year Lutron Advantage limited warranty available on Lutron equipped systems. Warranty period begins from the date of shipment by Seller. [Consult website for full warranty terms and conditions.](#)

|               |       |
|---------------|-------|
| PROJECT NAME: | TYPE: |
|---------------|-------|

## DIMMING COMPATIBILITY

### LUTRON DRIVER COMPATIBILITY

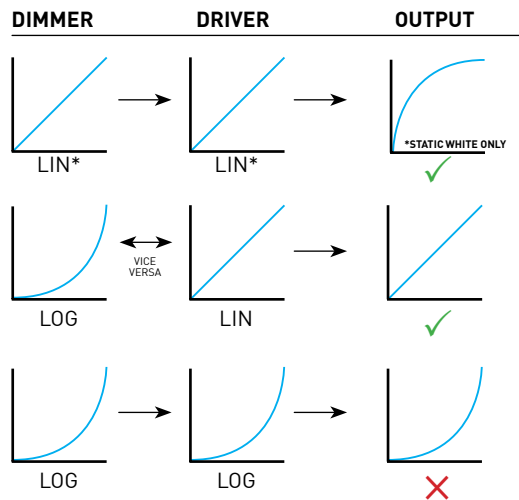
| Power supply LP1<br>Lutron Product Family               | Part No.                         |
|---|----------------------------------|
| PowPak Dimming Modules                                  | RMJ-EC032-DV-B                   |
| PowPak Dimming Modules                                  | FCJ/FCJS-ECO                     |
| Energi Savr Nodes                                       | QSN-1ECO-S                       |
| GRAFIK Eye QS control unit<br>Homeworks QS control unit | QSN-2ECO-S                       |
| GRAFIK Eye QS control unit<br>Homeworks QS control unit | QSGRJ- _E (wireless)<br>QSGR- _E |
| Quantum Hub   | QP2-__ 2C                        |
| Quantum Hub   | QP2-__ 4C                        |
| Quantum Hub   | QP2-__ 6C                        |
| Quantum Hub   | QP2-__ 8C                        |
| Homeworks QS power module<br>myRoom Plus power module   | LQSE-2ECO-D                      |



### eldoLED DRIVER COMPATIBILITY

| Power supply EG1 / SG3<br>Manufacturer | Family/Model #                 |
|--|--------------------------------|
| Busch-Jaeger                           | 2112U-101                      |
| Jung                                   | 240-10                         |
| Leviton Lighting Controls              | IP710-DLX                      |
| Lightolier Controls                    | ZP600FAM120                    |
| Merten                                 | 5729                           |
| Pass & Seymour                         | CD4FB-W                        |
| The Watt Stopper                       | DCLV1                          |
| Synergy                                | ISD BC                         |
| Crestron®                              | GLX-DIMFLV8                    |
| Crestron®                              | GLXP-DIMFLV8                   |
| Crestron®                              | GLPAC-DIMFLV4-*                |
| Crestron®                              | GLPAC-DIMFLV8-*                |
| Crestron®                              | GLPP-DIMFLVEX-PM               |
| Crestron®                              | GLPP-1DIMFLV2EX-PM             |
| Crestron®                              | GLPP-1DIMFLV3EX-PM             |
| Crestron®                              | DIN-A08                        |
| Crestron®                              | DIN-4DIMFLV4                   |
| Crestron®                              | CLS-EXP-DIMFLV                 |
| Crestron®                              | CLCI-1DIMFLV2EX                |
| Power supply EN1 / SN3<br>Manufacturer | Family/Model #                 |
| Lutron Electronics                     | Nova T® - NTFTV                |
| Lutron Electronics                     | Diva® - DVTV                   |
| Lutron Electronics                     | Nova® - NFTV                   |
| Lutron Electronics                     | GrafixEye® GRX-TVI w GRX3503   |
| Lutron Electronics                     | Energy Savr Node™ - QSN-4T16-S |
| Lutron Electronics                     | TVM2 Module                    |
| Sensor Switch                          | nIO EZ                         |
| ABB                                    | SD/S 2.16.1                    |

## ANALOG DRIVERS AND DIMMERS



LIN = LINEAR  
LOG = LOGARITHMIC  
\*LIN-TO-LIN NOT COMPATIBLE FOR WARM-DIM OR TUNABLE WHITE