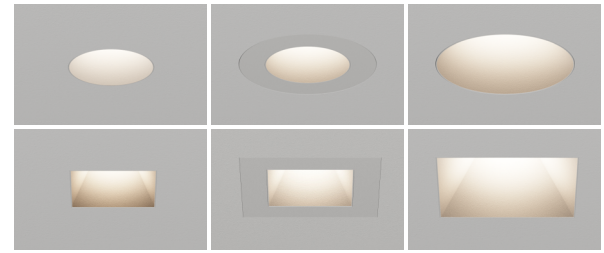


1 SERIES

FIXED IC HOUSING

- Max output of 971Lm at 80+ CRI
- Available with trimless and zero sightline baffles, featuring 1" and 1.6" apertures
- Expanded baffles feature UGR value of <7
- Available for Zero Sightline Millwork
- Available for remodel applications. See separate spec sheet

PROJECT NAME:	TYPE:
---------------	-------



ORDERING INFORMATION - FIXTURE



JA8-2022 COMPLIANCE INDICATED BY SHADING

TRIM	RATING	TYPE	BAFFLE & MOUNTING	EXTERIOR FINISH	INTERIOR FINISH	CRI	WATTAGE	CCT	OPTIC (UGR)	MEDIA	INSTALL TYPE	CEILING THICKNESS	DRIVER
		F										1	
1RP 1" Round 1SP 1" Square 1RE 1.6" Round Expanded 1SE 1.6" Square Expanded	1 IP20 Dry/Damp 2 IP64 Wet	F Fixed	T Trimless	TRIMLESS TG Trimless Gypsum* *(Required for T" baffle) TM Trimless Millwork* *(1RE/1SE only. Required for trimless millwork]	POWDERCOAT WH White AG Satin Silver AU Cashmere Gold AB Architectural Bronze BB Burnt Bronze BK Black SB Specular Black PR Primer CF Custom Finish * *(Consult Factory) ALUMINA *Brushed finishes only available for round baffles 01 Brushed Obsidian* 02 Matte Obsidian 03 Brushed Dark Patinated Bronze* 04 Matte Dark Patinated Bronze 05 Brushed Aged Aluminum* 06 Matte Aged Aluminum 07 Brushed Cast Brass* 08 Matte Cast Brass 09 Brushed Light Patinated Bronze 10 Matte Light Patinated Bronze	80S 80+ CRI 90S 90+ CRI 95S 95+ CRI	STATIC WHITE 1RP/1SP 06C 6W, 480 Lm 11C 11W, 731 Lm 15C 15W, 971 Lm 1RE/1SE 06C 6W, 504 Lm 11C 11W, 768 Lm 15C 15W, 970 Lm	24 2400K* *(90 CRI only) 27 2700K 30 3000K 35 3500K 40 4000K	20 20° 30 30° 40 40°	NL No Lens 01 Clear Film* *(Required for wet location)	INTEGRAL DRIVER IC IC AT IC, Airtight CP CCEA Chicago Plenum REMOTE DRIVER IR IC, Remote AR IC, Airtight, Remote CR CCEA Chicago Plenum, Remote	1 0.50" -1.50"	INTEGRAL / REMOTE PH1 Forward / Reverse Phase, 2%, 120V SG3 eldoLED, ECOdrive 1%, 0-10V, LOG, 120V-277V SN3 eldoLED, ECOdrive 1%, 0-10V, LIN, 120V-277V EG1 eldoLED, SOLOdive 0.1% 0-10V, LOG, 120V-277V EN1 eldoLED, SOLOdive 0.1% 0-10V, LIN, 120V-277V ED1 eldoLED, SOLOdive 0.1% DALI-2, LOG, 120V-277V AS1 Athena Control eldoLED, SOLOdive 0.1%, 120V-277V* *(Includes Athena Node. Extended lead time, consult factory). CS1 Casambi Control eldoLED, SOLOdive 0.1%, 120V-277V* *(Includes Casambi Node. Extended lead time, consult factory). REMOTE LP1 Lutron, Hi-Lume Premier Ecosystem 0.1% Fade to Black, 120V or 277V HUB Distributed Power System, Powers up to 6 Fixtures* *(Requires further specification on page 2) LOW VOLTAGE SYSTEM LVS Low Voltage System* *(See page 7 for specification information. Only available with IR, AR, and CR install types)

PART NUMBER NOTES

- Fixture ships as e.g., 1RE2FTTGAU90S15C3540NLIC1SG3
- Housing, driver, trim, and applique ship as one unit



1 SERIES FIXED IC HOUSING

ACCESSORIES

CONFIGURATION - REQUIRED FOR 'HUB' DRIVER SPECIFICATION

ASSEMBLY	QTY	WATTAGE	REMOTE DRIVER
HUB			
DISTRIBUTED POWER HUB	2X 2 Fixtures	06W 6 Watts	PH1 Forward/Reverse Phase, 2%, 120V
	3X 3 Fixtures	11W 11 Watts	SG5 eldoLED, ECOdrive 1%, 0-10V, LOG, 120V-277V
	4X 4 Fixtures	15W 15 Watts	SN5 eldoLED, ECOdrive 1%, 0-10V, LIN, 120V-277V
	5X 5 Fixtures		EG1 eldoLED, SOL0drive 0.1% 0-10V, LOG, 120V-277V
	6X 6 Fixtures		EN1 eldoLED, SOL0drive 0.1% 0-10V, LIN, 120V-277V
			ED1 eldoLED, SOL0drive 0.1% DALI-2, LOG, 120V-277V
			AS1 Athena Control, eldoLED, SOL0drive, 0.1%, 120V-277V* *(Includes Athena Node. Extended lead time, consult factory)
			CS1 Casambi Control eldoLED, SOL0drive, 0.1%, 120V-277V/* *(Includes Casambi Node. Extended lead time, consult factory)

PART NUMBER NOTES

- Configuration e.g.HUB2X15W-PH1, ordered as separate line item

ACCESSORIES

REPLACEMENT OPTICS

Interchangeable optics accessible through fixture aperture.

STATIC WHITE

WARM DIM

- ☐ RO-17-20 20° optic
- ☐ RO-17-30 30° optic
- ☐ RO-17-40 40° optic
- ☐ RO-17-40-W 40° optic

REPLACEMENT BAFFLE ASSEMBLY (INCLUDES MEDIA)

ASSEMBLY	SHAPE	RATING	TYPE	BAFFLE	EXTERIOR FINISH	INTERIOR FINISH	MEDIA
RBA			F				
REPLACEMENT BAFFLE ASSEMBLY	1RP Round	1 IP20 Dry/Damp	F Fixed	T Trimless* (Required for 1RE/1SE)	TG Trimless Gypsum	WH White	NL No Lens
	1SP Square	2 IP64 Wet* * (Baffle removal tool provided for aim and focus)		TM Trimless Millwork	AG Satin Silver	01 Clear Glass Lens	
	1RE Round Expanded			G Zero Sightline* (1RP/1SP Only)	WH White		AU Cashmere Gold
	1SE Square Expanded			AG Satin Silver	BB Burnt Bronze		
				AU Cashmere Gold	BK Black		
				AB Arch. Bronze	PR Primer		
				BB Burnt Bronze	CF Custom Finish * * (Consult Factory)		
				BK Black	*See page 1 for Alumina finish options		
				PR Primer			
				CF Custom Finish * * (Consult Factory)			
				**See page 1 for Alumina finish options			

REPLACEMENT INSTALLATION TOOLS

One included with every six fixtures designated Wet location.

- ☐ 01S-TOOL-BAFFLE-REMOVAL Allows for baffle removal with Wet location
- ☐ 01S-TOOL-ENGINE-INST-REMOVAL Allows for installation of LED module
- ☐ 01S-TOOL-ENGINE-BAFFLE-COMBO Includes both baffle removal tool and LED installation tool

HANGER BAR EXTENDER KIT

Extends hanger bars from 24.0" to 46.0" maximum.

- ☐ FRX-HBE-46 Extender, Hanger Bar

EMERGENCY LIGHTING - REMOTE MOUNT ONLY

During disruption of main power, emergency battery inverter provides temporary 120V or 277V to fixture.

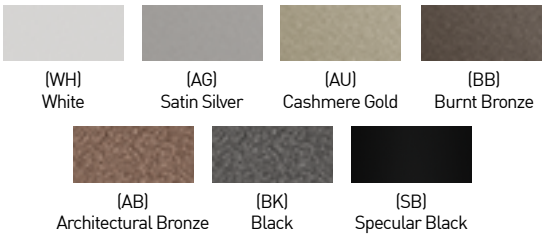
- ☐ EMB-S-25-120/277-LEDX 25 watt max capacity, 120 or 277 VAC 60Hz, Non-Dimmable
- ☐ EMB-S-100-120-LEDX 100 watt max capacity, 120 VAC 60Hz, 0-10V Dimmable
- ☐ EMB-S-100-277-LEDX 100 watt max capacity, 277 VAC 60Hz, 0-10V Dimmable
- ☐ EMB-S-250-120/277-LEDX 250 watt max capacity, 120 or 277 VAC 60Hz, 0-10V Dimmable

*CONSULT FACTORY FOR USE WITH WIRELESS CONTROLS.

COMPATIBILITY BY DRIVER TYPE AND QUANTITY

DRIVER	HUB2X			HUB3X			HUB4X			HUB5X			HUB6X		
	06W	11W	15W	06W	11W	15W	06W	11W	15W	06W	11W	15W	06W	11W	15W
PH	✓	✓	✓	✓	✓	✓	✓	✓	✓	✓	✓		✓		
SG/SN	✓	✓	✓	✓	✓	✓	✓	✓	✓	✓	✓	✓	✓	✓	✓
EG/EN/ED	✓	✓	✓	✓	✓	✓	✓	✓	✓	✓	✓	✓	✓	✓	
AS/CS	✓	✓	✓	✓	✓	✓	✓	✓	✓	✓	✓	✓	✓	✓	

POWDERCOAT FINISHES



ALUMINA FINISHES BY LUCIFER LIGHTING™



1 SERIES FIXED IC HOUSING

PERFORMANCE - 1RP - 3000K - NO LENS

LUMEN PACKAGE	WATTS	20° OPTIC		30° OPTIC		40° OPTIC	
		DLVD	LPW	DLVD	LPW	DLVD	LPW
80S06C	6	223	37	384	64	480	80
80S11C	11	340	31	585	53	731	66
80S15C	15	451	30	777	52	971	65
90S06C	6	193	32	332	55	415	69
90S11C	11	294	27	506	46	632	57
90S15C	15	390	26	672	45	839	56
95S06C	6	139	23	239	40	298	50
95S11C	11	211	19	363	33	454	41
95S15C	15	280	19	483	32	603	40
90L11DL (27K-18K)	11	-	-	-	-	363	33
90L11DD (30K-18K)	11	-	-	-	-	385	35
90L15DL (27K-18K)	15	-	-	-	-	481	32
90L15DD (30K-18K)	15	-	-	-	-	511	34

OUTPUT MULTIPLIER	
CCT	CCT SCALE
2400K	0.89
2700K	0.98
3000K	1.00
3500K	1.09
4000K	1.14

MEDIA LIGHT LOSS MULTIPLIER	
MEDIA	LIGHT LOSS FACTOR
NO LENS	1.00
LENS	0.93

FINISH MULTIPLIER	
CCT	CCT SCALE
WHITE	1.00
BLACK	0.98
SPECULAR BLACK	0.98

TITLE 24 JA8-2022 INDICATED BY SHADING

UNIFIED GLARE RATING		
20° OPTIC	30° OPTIC	40° OPTIC
<13	<13	<10

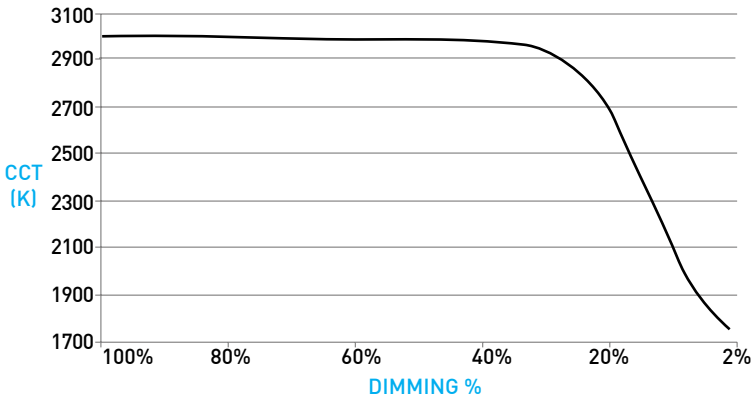
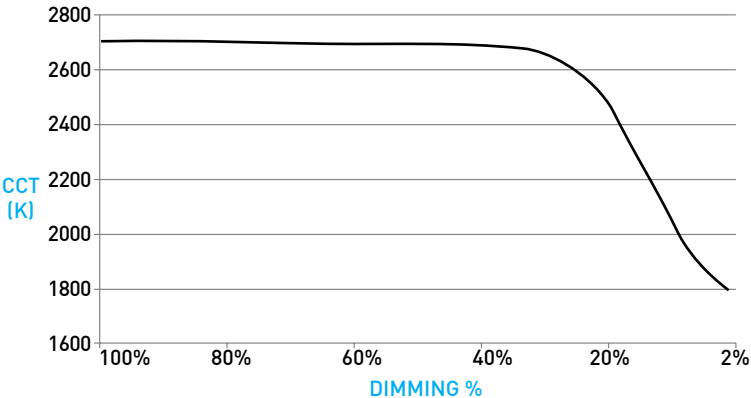
WARM DIM PERFORMANCE - NO LENS - 40° OPTIC

INCANDESCENT PROFILE - TRIMLESS

90L11DL 2700K - 1800K	Full on 100%	Dimmed to 80%	Dimmed to 70%	Dimmed to 50%	Dimmed to 20%	Dimmed to 10%	Dimmed to 2%
CCT (K)	2700K	2700K	2700K	2700K	2500K	1900K	1800K
Light Output (Lm)	363	290	254	182	73	36	7
Power (W)	11	8.8	7.7	5.5	2.2	1.1	0.2
Efficacy (LPW)	33	33	33	33	33	33	33
90L15DL 2700K - 1800K	Full on 100%	Dimmed to 80%	Dimmed to 70%	Dimmed to 50%	Dimmed to 20%	Dimmed to 10%	Dimmed to 2%
CCT (K)	2700K	2700K	2700K	2700K	2500K	1900K	1800K
Light Output (Lm)	481	385	337	241	96	48	10
Power (W)	15	12	10.5	7.5	3	1.5	0.3
Efficacy (LPW)	32	32	32	32	32	32	32

HALOGEN PROFILE - TRIMLESS

90L11DD 3000K - 1800K	Full on 100%	Dimmed to 80%	Dimmed to 70%	Dimmed to 50%	Dimmed to 20%	Dimmed to 10%	Dimmed to 2%
CCT (K)	3000K	3000K	3000K	3000K	3000K	2000K	1800K
Light Output (Lm)	385	308	270	193	77	39	8
Power (W)	11	8.8	7.7	5.5	2.2	1.1	0.2
Efficacy (LPW)	33	33	33	33	33	33	33
90L15DD 3000K - 1800K	Full on 100%	Dimmed to 80%	Dimmed to 70%	Dimmed to 50%	Dimmed to 20%	Dimmed to 10%	Dimmed to 2%
CCT (K)	3000K	3000K	3000K	3000K	3000K	2000K	1800K
Light Output (Lm)	511	409	358	256	102	51	10
Power (W)	15	12	10.5	7.5	3	1.5	0.3
Efficacy (LPW)	35	35	35	35	35	35	35



NOTE: LIN-TO-LIN 0-10V PAIRING NOT COMPATIBLE WITH WARM DIM.

1 SERIES FIXED IC HOUSING

PERFORMANCE - 1RE - 3000K - NO LENS

LUMEN PACKAGE	WATTS	20° OPTIC		30° OPTIC		40° OPTIC	
		DLVD	LPW	DLVD	LPW	DLVD	LPW
80S06C	6	222	37	393	65	504	84
80S11C	11	338	31	598	54	768	70
80S15C	15	449	30	795	53	970	65
90S06C	6	192	32	340	57	436	73
90S11C	11	292	27	517	47	664	60
90S15C	15	388	26	687	46	839	56
95S06C	6	138	23	244	41	313	52
95S11C	11	210	19	372	34	477	43
95S15C	15	279	19	494	33	611	41
90L11DL (27K-18K)	11	-	-	-	-	370	34
90L11DD (30K-18K)	11	-	-	-	-	392	36
90L15DL (27K-18K)	15	-	-	-	-	490	33
90L15DD (30K-18K)	15	-	-	-	-	520	35

OUTPUT MULTIPLIER	
CCT	CCT SCALE
2400K	0.89
2700K	0.98
3000K	1.00
3500K	1.09
4000K	1.14

MEDIA LIGHT LOSS MULTIPLIER	
MEDIA	LIGHT LOSS FACTOR
NO LENS	1.00
LENS	0.93

FINISH MULTIPLIER	
CCT	CCT SCALE
WHITE	1.00
BLACK	0.98
SPECULAR BLACK	0.98

TITLE 24 JA8-2022 INDICATED BY SHADING

UNIFIED GLARE RATING		
20° OPTIC	30° OPTIC	40° OPTIC
<7	<7	<7

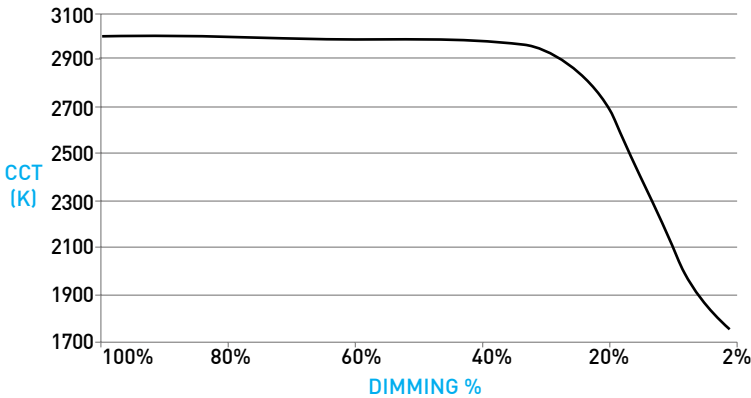
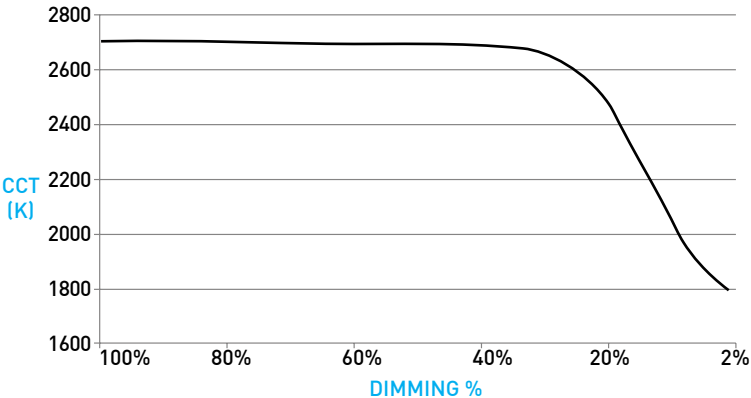
WARM DIM PERFORMANCE - NO LENS - 40° OPTIC

INCANDESCENT PROFILE - TRIMLESS

90L11DL 2700K - 1800K	Full on 100%	Dimmed to 80%	Dimmed to 70%	Dimmed to 50%	Dimmed to 20%	Dimmed to 10%	Dimmed to 2%
CCT (K)	2700K	2700K	2700K	2700K	2500K	1900K	1800K
Light Output (Lm)	370	296	259	185	74	37	7
Power (W)	11	8.8	7.7	5.5	2.2	1.1	0.2
Efficacy (LPW)	33	33	33	33	33	33	33
90L15DL 2700K - 1800K	Full on 100%	Dimmed to 80%	Dimmed to 70%	Dimmed to 50%	Dimmed to 20%	Dimmed to 10%	Dimmed to 2%
CCT (K)	2700K	2700K	2700K	2700K	2500K	1900K	1800K
Light Output (Lm)	490	392	343	245	98	49	10
Power (W)	15	12	10.5	7.5	3	1.5	0.3
Efficacy (LPW)	32	32	32	32	32	32	32

HALOGEN PROFILE - TRIMLESS

90L11DD 3000K - 1800K	Full on 100%	Dimmed to 80%	Dimmed to 70%	Dimmed to 50%	Dimmed to 20%	Dimmed to 10%	Dimmed to 2%
CCT (K)	3000K	3000K	3000K	3000K	3000K	2000K	1800K
Light Output (Lm)	392	314	274	196	78	39	8
Power (W)	11	8.8	7.7	5.5	2.2	1.1	0.2
Efficacy (LPW)	33	33	33	33	33	33	33
90L15DD 3000K - 1800K	Full on 100%	Dimmed to 80%	Dimmed to 70%	Dimmed to 50%	Dimmed to 20%	Dimmed to 10%	Dimmed to 2%
CCT (K)	3000K	3000K	3000K	3000K	3000K	2000K	1800K
Light Output (Lm)	520	416	364	260	104	52	10
Power (W)	15	12	10.5	7.5	3	1.5	0.3
Efficacy (LPW)	35	35	35	35	35	35	35



NOTE: LIN-TO-LIN 0-10V PAIRING NOT COMPATIBLE WITH WARM DIM.

1 SERIES FIXED IC HOUSING

DOWNLIGHT / HOUSING

A IC HOUSING

- For IC ceilings, also suitable for NC applications.
- No setback from polycell spray foam insulation having max R-Value of 60 on all sides and top of housing.

B LIGHT ENGINE

Robust light engine with optimized optic pairing integrates Reflection, Refraction, and TIR offering 20°, 30°, and 40° beams.

C TRIMLESS MILLWORK / ZERO SIGHTLINE MILLWORK SPACERS & MOUNTING ADAPTOR

Provided for Trimless Millwork (Type "M") installations; includes (1) 1/16" spacer and (5) 1/8" spacers.

D ZERO-SIGHTLINE / TRIMLESS DRYWALL PROFILE

Installs totally flush with the ceiling with no visible trim. Appliqué includes screws for mounting and has 0.06" plaster stop. Not recommended for stucco applications.

E 1" ZERO-SIGHTLINE / TRIMLESS BAFFLE

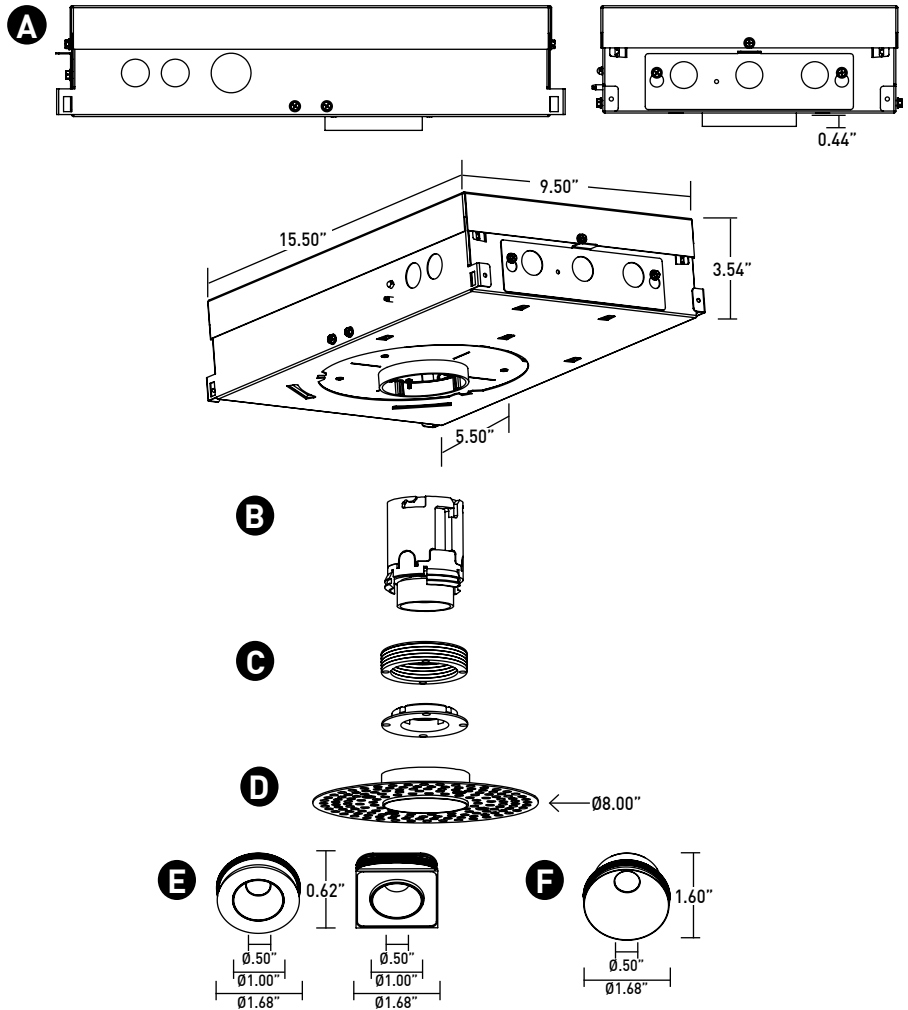
CNC-Milled removable baffle provides 45° glare cutoff. Minimizes aperture glare and conceals view into housing; includes gasket. Exterior faceplate available in powdercoat, plated, and alumina finishes; interior finish available in powdercoat and alumina finishes. Available in zero-sightline and trimless profiles.

Trimless baffle requires 1.7" square ceiling break for LED/driver servicing.

F 1.6" EXPANDED BAFFLE

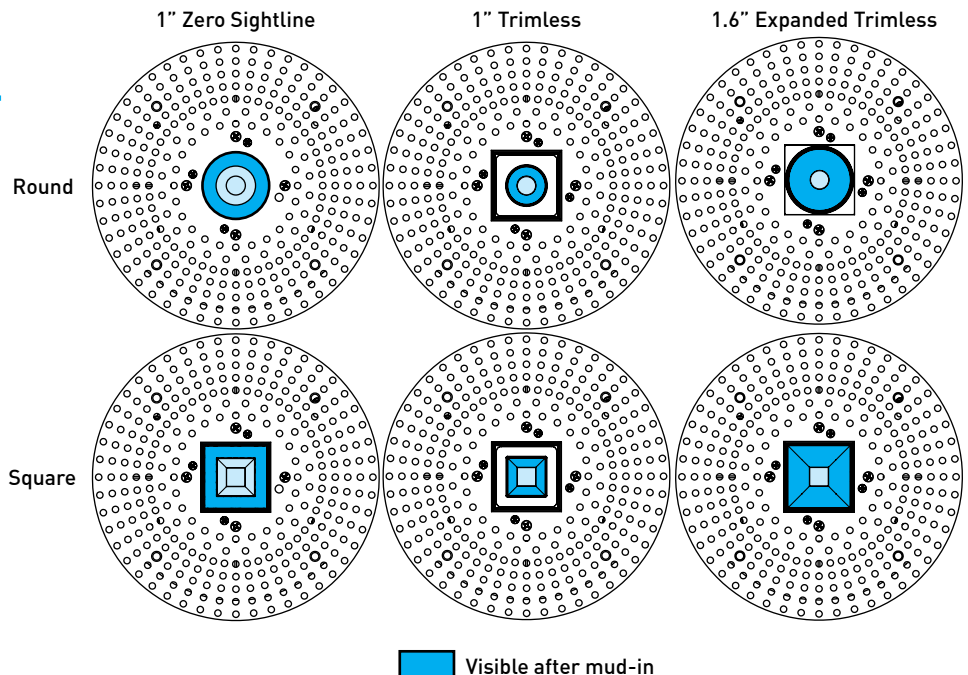
CNC-Milled removable baffle provides 46° glare cutoff. Minimizes aperture glare and conceals view into housing; includes gasket. No exterior finish, interior finish available in powdercoat and alumina finishes. Available in trimless profile only.

DIMENSIONS / DRAWINGS



HOUSING NOTES

- Power supply compartment and all splice connections may be serviced from room side.
- Consult factory for spacing requirements for any installations exceeding R-Value 60.
- Hanger bars extend from 14.0" to 24.0", but may be field cut to accommodate narrow stud spacing. Can be extended up to 46" maximum with FRX-HBE-46 kit.
- Hanger bars and brackets add 4.00" max to the overall dimension, but are exclusive of the setback requirements.
- Housings for both round and square trims feature a round aperture housing collar that rotates up to 90 degrees for fixture alignment. Housing collars accommodate ceiling thicknesses between 0.50" and 1.50".



1 SERIES FIXED IC HOUSING

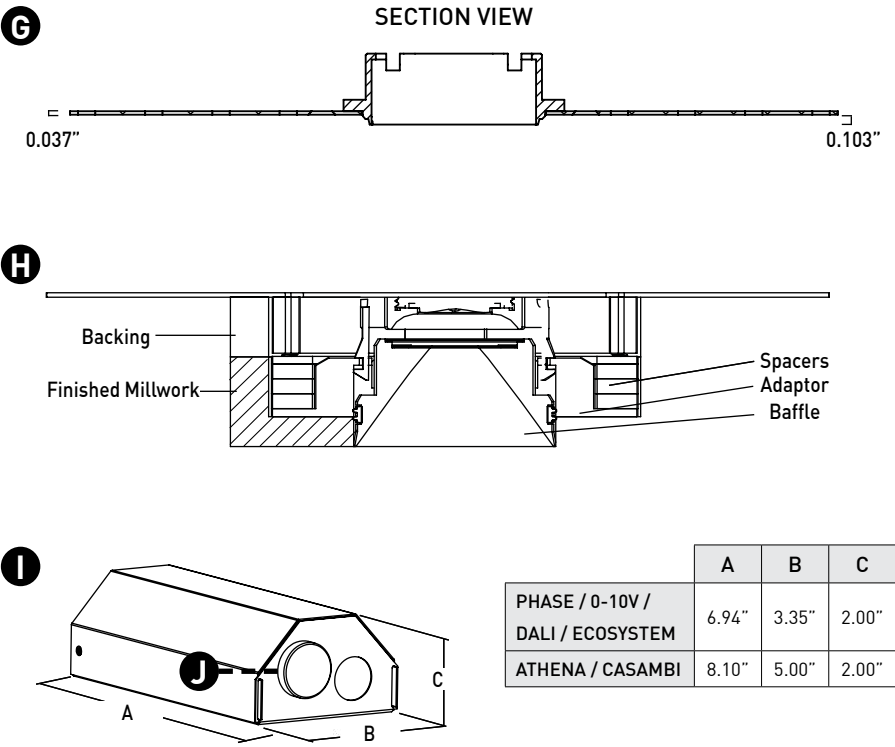
DOWNLIGHT / HOUSING

- G APPLIQUÉ DETAIL**
Appliqué for plaster floating directly to baffle.
- H TRIMLESS MILLWORK**
Installs totally flush with the ceiling with no visible trim. Requires the spacers and adaptor specified with "M" installation type.
- I REMOTE POWER SUPPLY**
Provided with install Types "IR", "NR", "AR" and "CR". Remote power supply provides additional driver options. See page 8 for maximum allowable secondary run lengths between PS-RMT and fixture. Must be installed in an accessible location.
- J ATHENA / CASAMBI CONTROL**
Controls integrated Remote driver assembly. All equipment is serviceable.

Athena Model Numbers: A-WN-D01-RF-BL & DFC-OEM-DBI

Casambi Model Number: BT-S1E1-5400

DIMENSIONS / DRAWINGS

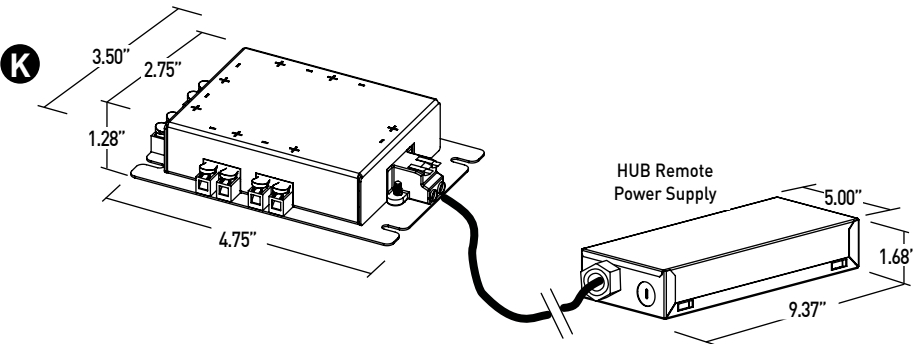


DISTRIBUTED POWER ACCESSORY

- K HUB**
Included with "HUB" driver selection. Allows for multi-fixture power distribution from one remote power supply to a maximum of 6 fixtures. Connectable fixture quantity is specified in fixture part number on page 2. Hub base plate allows for structural mounting and wiring during rough-in. Wiring distances for HUB based on quantity featured in figure K.

Model Number e.g.: HUB2X15W-PH1

DIMENSIONS / DRAWINGS



MAXIMUM ALLOWABLE TOTAL WIRING LENGTH

DRIVER-TO-HUB AWG	HUB-TO-FIXTURE AWG	TOTAL LENGTH
18	18	150'
16	16	200'
14	14	250'
12	18	400'*
12	16	450'*
12	14	500'*
*Total length requires 250' 12AWG Driver-to-Hub wiring		

1 SERIES FIXED IC HOUSING

LOW VOLTAGE SYSTEM (LVS) SPECIFICATION NOTES

- Customers are responsible for ensuring power supply drive current is set to correct values shown below in the drive current specifics section.
- Customers must ensure voltage range of the proposed power supply encompasses the fixtures complete Vf range, both maximum and minimum, and can be set to the required mA drive current. If assistance is required contact your maunfacturers representative or the factory.
- Lucifer Lighting is not responsible for confirming dimming compatability between power supplies and control systems / dimmers.
- Lucifer Lighting will not ship fixtures with a power supply supplied by others inside the fixture.
- Consult power supply manufacturer for maximum remote wiring distances.
- Housing and Fixture feature 18 AWG wiring.
- Wiring connections are made in the splicing compartment using customer supplied connectors, ex. wire nuts, push-in connectors, or terminal blocks.
- LVS Housings and Fixtures supplied by Lucifer Lighing are UL 2108 Listed.

DRIVE CURRENT SPECIFICS

	80S / 90S / 95S			90L	
	06C	11C	15C	11D	15D
Minimum Vf	31	31	31	33	33
Maximum Vf	37	37	37	38	38
Current mA	150	250	350	250	350
Wattage W	5.0	8.5	11.8	8.9	12.5

1 SERIES FIXED IC HOUSING

TECHNICAL

CONSTRUCTION

Downlight: Painted finishes are granulated powder coat; Alumina finishes are anodized aluminum.

Housing: Aluminum and 22 Gauge galvanized steel. Forged aluminum heat-sink.

Remote Power Supply: 22 Gauge galvanized steel.

Appliqué: Aluminum base with 22 Gauge galvanized steel flange.

STATIC WHITE LED

2-step MacAdam ellipse LED module available in 80+, 90+ and 95+ CRI configurations in color temperatures of 2700K, 3000K, 3500K and 4000K. 3-step MacAdam ellipse LED module available in 90+ CRI configuration in color temperature of 2400K. Average rated lamp life: 50,000 hours. LED and driver assemblies are field-replaceable.

WARM DIM LED

3-step MacAdam ellipse warm dim LED module available in 90+ CRI configuration 3000K or 2700K at full brightness, warming to 1800K at full dim. Average rated lamp life of 50,000 hours. LED and driver assemblies are field-replaceable.

POWER SUPPLY PERFORMANCE AND DIMMING INFORMATION

	PHASE	0-10V				ECO	DALI-2	ATHENA		CASAMBI	
Power Supply	PH1	SG3	SN3	EG1	EN1	LP1	ED1	AS1	AD1	CS1	CD1
Minimum °C	-20 °C	-20 °C	-20 °C	-20 °C	-20 °C	0 °C	-20 °C	0 °C	0 °C	-20 °C	-20 °C
Maximum °C	40 °C	40 °C	40 °C	40 °C	40 °C	40 °C	40 °C	40 °C	40 °C	40 °C	40 °C
Dimming %	2.0%	1.0%	1.0%	0.1%	0.1%	0.1%	0.1%	0.1%	0.1%	0.1%	0.1%

Note: For LP1, EG1 and EN1 drivers consult chart on page 9 to confirm appropriate dimming curve for compatibility with selected control.

MAXIMUM ALLOWABLE REMOTE DRIVER WIRING DISTANCES

DRIVER	WIRE AWG				
	12	14	16	18	20
PH1	285'	180'	113'	71'	45'
LP1	60'	40'	25'	15'	-
EG1, EN1, ED1, SG3, SN3, AS1, CS1, AD1, CD1	-	-	118'	72'	46'

LISTING

Fixtures listed to UL 1598 for Dry / Damp and Wet Locations, and are NEMA 410 compliant.

LVS designated fixtures are listed to UL 2108.

Install Types AT & AR are Title 24 JA8-2022 compliant.

Install Types CP & CR are CCEA certified.

BUY AMERICAN ACT

Buy American Act compliant.

WEIGHT

Housing with Integral Driver - 7 lbs max

Remote Driver - 1.4 lbs

LIMITED WARRANTY

Manufacturer's Limited Warranty guarantees product(s) listed to be free from defects in material and workmanship under normal use and service for 1-year. LED and power supplies are warranted to operate with 70% of original flux and remain within a range of 3 duv for a period of 5-years. 10-year Lutron Advantage limited warranty available on Lutron equipped systems. Warranty period begins from the date of shipment by Seller.

[Consult website for full warranty terms and conditions.](#)

CHANGE LOG

- 05/06/2025: ADDED WARM DIM AND DISTRIBUTED POWER PRODUCT OFFERINGS.
- 12/09/2025: ADDED LVS OFFERING.



1 SERIES FIXED IC HOUSING

DIMMING COMPATIBILITY

LUTRON DRIVER COMPATIBILITY

Power supply LP1 Lutron Product Family	Part No.
PowPak Dimming Modules	RMJ-EC032-DV-B
PowPak Dimming Modules	FCJ/FCJS-ECO
Energi Savr Nodes	QSN-1ECO-S
GRAFIK Eye QS control unit	QSN-2ECO-S
Homeworks QS control unit	QSGRJ- _E (wireless) QSGR- _E
Quantum Hub	QP2- _ _ 2C
Quantum Hub	QP2- _ _ 4C
Quantum Hub	QP2- _ _ 6C
Quantum Hub	QP2- _ _ 8C
Homeworks QS power module	LQSE-2ECO-D
myRoom Plus power module	



eldoLED DRIVER COMPATIBILITY

Power supply EG1 Manufacturer	Family/Model #
Busch-Jaeger	2112U-101
Jung	240-10
Leviton Lighting Controls	IP710-DLX
Lightolier Controls	ZP600FAM120
Merten	5729
Pass & Seymour	CD4FB-W
The Watt Stopper	DCLV1
Synergy	ISD BC
Crestron®	GLX-DIMFLV8
Crestron®	GLXP-DIMFLV8
Crestron®	GLPAC-DIMFLV4-*
Crestron®	GLPAC-DIMFLV8-*
Crestron®	GLPP-DIMFLVEX-PM
Crestron®	GLPP-1DIMFLV2EX-PM
Crestron®	GLPP-1DIMFLV3EX-PM
Crestron®	DIN-A08
Crestron®	DIN-4DIMFLV4
Crestron®	CLS-EXP-DIMFLV
Crestron®	CLCI-1DIMFLV2EX
Power supply EN1 Manufacturer	Family/Model #
Lutron Electronics	Nova T® - NTFTV
Lutron Electronics	Diva® - DVTV
Lutron Electronics	Nova® - NFTV
Lutron Electronics	GrafixEye® GRX-TVI w GRX3503
Lutron Electronics	Energy Savr Node™ - QSN-4T16-S
Lutron Electronics	TVM2 Module
Sensor Switch	nIO EZ
ABB	SD/S 2.16.1

ANALOG DRIVERS AND DIMMERS

