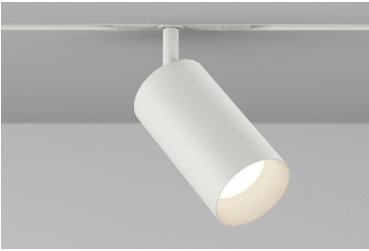


# TRACK HEAD INT MONOPOINT INSPIRED CTM2 ADJUSTABLE

Highlight art, objects, places, spaces, seating areas, and architectural details with a classic profile that offers easy-to-adjust, in-field versatility.

PROJECT NAME:

TYPE:



## ORDERING INFORMATION - TRACK HEAD

CYLINDER	FIXTURE	STEM LENGTH	RATING	BODY FINISH	BAFFLE FINISH	STEM FINISH	ADAPTER FINISH	CRI / WATTAGE PACKAGE	CCT	OPTIC (UGR)	DRIVER	MEDIA
CTM2			1								IE2	
CTM2 3.25"	A Adjustable 90° Tilt  L Locking Track Adaptor, Adjustable 90° Tilt*  *(Required for Wall Mount)	LENGTHS	1 Dry	POWDERCOAT	POWDERCOAT	POWDERCOAT	WH White  BK Black	<div>STATIC WHITE</div> <div>80S11A 80+ CRI, 11 Watts Lumens Delivered - 1216</div> <div>80S17A 80+ CRI, 17 Watts Lumens Delivered - 1843</div> <div>90S11A 90+ CRI, 11 Watts Lumens Delivered - 1045</div> <div>90S17A 90+ CRI, 17 Watts Lumens Delivered - 1583</div> <div>97S11A 97+ CRI, 11 Watts Lumens Delivered - 918</div> <div>97S17A 97+ CRI, 17 Watts Lumens Delivered - 1390</div> <div><div>WARM DIM</div><div>90L17A 90+ CRI, 17 Watts Incandescent Profile Lumens Delivered - 1244</div><div>Halogen Profile Lumens Delivered - 1309</div><div>SEE PAGE 2 FOR WARM DIM PROFILE COMPARISON.</div><div>LUMENS DELIVERED REFLECT 3000K PAIRED WITH 20° OPTIC AND SOFT FOCUS LENS.</div></div>	24 2400K* *(90+ CRI only) 27 2700K 30 3000K 35 3500K 40 4000K	10 10° (>19) 15 15° (<13) 20 20° (<10) 25 25° (<10) 40 40° (<10) 60 60° (<16)	IE2 Electronic 2% ELV / TRIAC 220V-240V	STANDARD MEDIA 4 Soft Focus Lens* *(Required for 10° optic)  ALTERNATE MEDIA 2 Honeycomb Louver 3 Clear Glass Lens 5 Frosted Glass Lens 6 Frosted Soft Focus Lens 7 Frosted Linear Spread Lens S Soft Focus Lens w/ Honeycomb Louver F Frosted Glass Lens w/ Honeycomb Louver N No Lens
		SL 1.4" Standard		WH White BK Black AB Architectural Bronze AG Satin Silver AU Cashmere Gold BB Burnt Bronze	WH White BK Black AB Architectural Bronze AG Satin Silver AU Cashmere Gold BB Burnt Bronze	WH White BK Black AB Architectural Bronze AG Satin Silver AU Cashmere Gold BB Burnt Bronze						
		04 4"										
		06 6"										
		08 8"										
		CUSTOM LENGTHS		ALUMINA	ALUMINA	ALUMINA						
		XX Specify in 1" increments between 2" - 7" (Ex. 2" = 02)* *(Increased lead time)		01 Brushed Obsidian 02 Matte Obsidian 03 Brushed Dark Patinated Bronze 04 Matte Dark Patinated Bronze 05 Brushed Aged Aluminum 06 Matte Aged Aluminum 07 Brushed Cast Brass 08 Matte Cast Brass 09 Brushed Light Patinated Bronze 10 Matte Light Patinated Bronze	CONSULT FACTORY FOR ALUMINA FINISHES	CONSULT FACTORY FOR ALUMINA FINISHES						
		STEMS ARE NOT FIELD CUTTABLE										

### ALUMINA FINISHES BY LUCIFER LIGHTING™



### POWDERCOAT FINISHES



TRACK HEAD INT J-HINGE CTM2 ADJUSTABLE

ACCESSORIES

ALTERNATE MEDIA

- ☐ HCL-CT2 Honeycomb Louver
- ☐ CGL-CT2 Clear Glass Lens
- ☐ SFL-CT2 Soft Focus Lens
- ☐ FGL-CT2 Frosted Glass Lens
- ☐ FSFL-CT2 Frosted Soft Focus Lens
- ☐ FLSL-CT2 Frosted Linear Spread Lens

REPLACEMENT OPTICS

Interchangeable optics accessible by removing baffle.

Static White

- ☐ RO-70-15-S 15° optic
- ☐ RO-70-20-S 20° optic
- ☐ RO-70-25-S 25° optic
- ☐ RO-70-40-S 40° optic
- ☐ RO-70-60-S 60° optic

Warm Dim

- ☐ RO-70-15-W 15° optic
- ☐ RO-70-20-W 20° optic
- ☐ RO-70-25-W 25° optic
- ☐ RO-70-40-W 40° optic
- ☐ RO-70-60-W 60° optic

PERFORMANCE - 3000K

LUMEN PACKAGE	WATTAGE	10° OPTIC		15° OPTIC		20° OPTIC		25° OPTIC		40° OPTIC		60° OPTIC	
		SOFT FOCUS LENS	DELIVERED	SOFT FOCUS LENS	DELIVERED	SOFT FOCUS LENS	DELIVERED	SOFT FOCUS LENS	DELIVERED	SOFT FOCUS LENS	DELIVERED	SOFT FOCUS LENS	DELIVERED
80S11A	11		613		55		1143		104		1216		111
80S17A	17		828		49		1750		103		1843		108
90S11A	11		528		48		982		89		1045		95
90S17A	17		714		42		1503		88		1583		91
97S11A	11		456		41		862		78		918		83
97S17A	17		616		36		1320		78		1390		82
90L17AL (2700K-1800K)	17		-		-		1249		73		1244		73
90L17AD (3000K-1800K)	17		-		-		1314		77		1309		77

Part L 75+ LPW configurations comply with residential Part L  
95+ LPW configurations comply with commercial Part L

UNIFIED GLARE RATING

10° OPTIC	15° OPTIC	20° OPTIC	25° OPTIC	40° OPTIC	60° OPTIC
SOFT FOCUS LENS	SOFT FOCUS LENS	SOFT FOCUS LENS	SOFT FOCUS LENS	SOFT FOCUS LENS	SOFT FOCUS LENS
>19	<13	<10	<10	<10	<16

MEDIA LIGHT LOSS MULTIPLIER

MEDIA	LIGHT LOSS FACTOR
No Lens	1.05
CGL	0.97
SFL	1.00
FGL	0.85
FSFL	0.82
FLSL	0.78
WDL	0.00
HCL	0.75
SFL W/ HCL	0.68
FGL W/ HCL	0.47

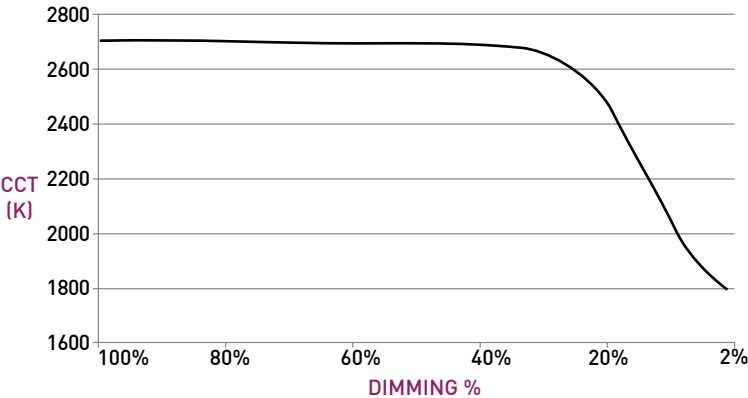
OUTPUT MULTIPLIER

CCT	CCT SCALE
2400K	0.85
2700K	0.97
3000K	1.000
3500K	1.03
4000K	1.08

WARM DIM PERFORMANCE - SOFT FOCUS LENS - 20° OPTIC

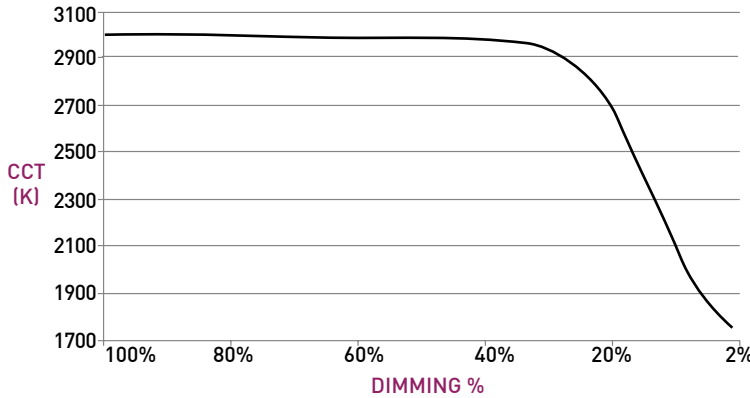
INCANDESCENT PROFILE

90L17AWL 2700K - 1800K	Full on 100%	Dimmed to 80%	Dimmed to 70%	Dimmed to 50%	Dimmed to 20%	Dimmed to 10%	Dimmed to 2%
CCT (K)	2700	2700	2700	2700	2500	1950	1800
Light Output (lm)	1244	995	871	622	249	124	25
Power (W)	17	8.8	7.7	5.5	2.2	1.1	0.2
Efficacy (LPW)	73	73	73	73	73	73	73



HALOGEN PROFILE

90L17AWD 3000K - 1800K	Full on 100%	Dimmed to 80%	Dimmed to 70%	Dimmed to 50%	Dimmed to 20%	Dimmed to 10%	Dimmed to 2%
CCT (K)	3000	3000	3000	3000	3000	2150	1800
Light Output (lm)	1309	1047	916	655	262	131	26
Power (W)	17	8.8	7.7	5.5	2.2	1.1	0.2
Efficacy (LPW)	77	77	77	77	77	77	77



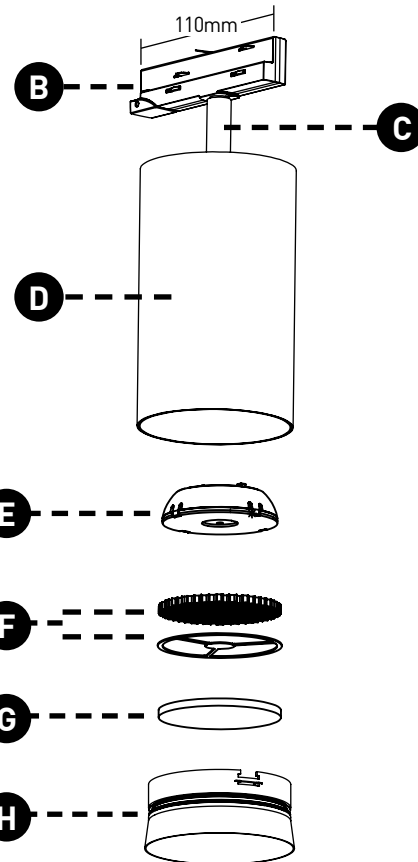
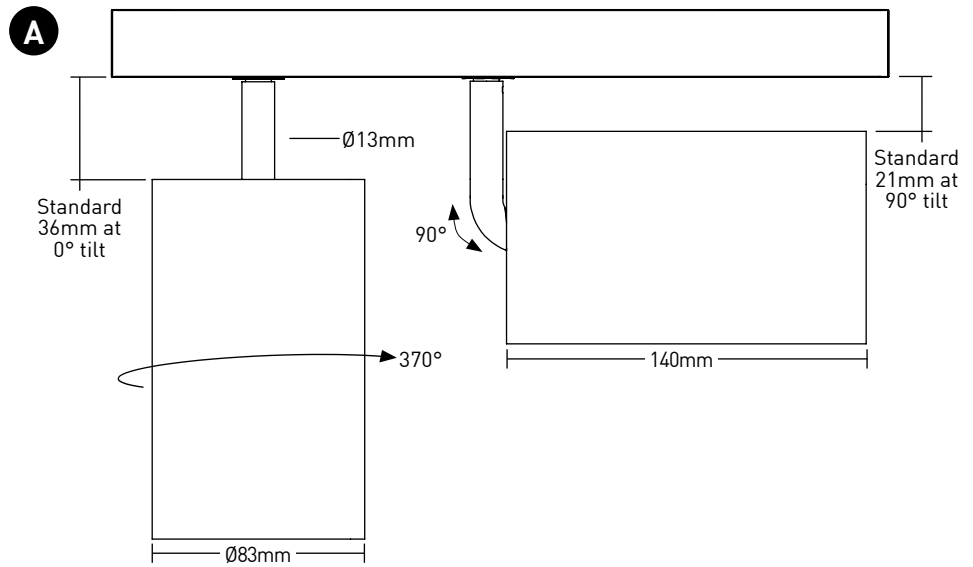
NOTE: LIN-TO-LIN 0-10V PAIRING NOT COMPATIBLE WITH WARM DIM.

# TRACK HEAD INTERNATIONAL CTM2 ADJUSTABLE

## TRACK HEAD

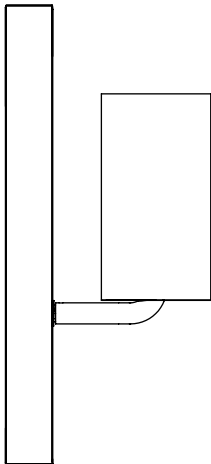
- A ADJUSTABILITY**  
Up to 90° lockable tilt and 370° lockable rotation.
- B TRACK ADAPTER**  
Proprietary asymmetric track adapter; compatible with Lucifer Lighting track only. Available in Black and White finishes to match track systems.
- C STEM**  
Standard length is 1.4", available in even-inch increments from 2" - 8". Stem is not field cuttable. Powdercoat finishes standard, consult factory for Alumina finishes.
- D BODY**  
Power supply integrated into fixture body. Available in powdercoat and Alumina finishes.
- E OPTICS**  
Robust light engine with optimized optic pairing integrates Reflection, Refraction, and TIR offering 10°, 15°, 20°, 25°, 40° & 60° beams.
- F 10° FIELD REDUCER**  
Provided with 10° optic, includes honeycomb louver. Reduces field angle by 30%.
- G MEDIA**  
Soft Focus Lens standard. Wet location media sealed in place.
- H BAFFLE**  
Accepts 2 media devices. Baffle minimizes aperture glare and conceals view into fixture. Powdercoat finishes standard, consult factory for Alumina finishes.

## DIMENSIONS / DRAWINGS



## WALL MOUNT

- CTM2 may be installed in vertical track or wall mounted. Must specify fixture as Wall Mount "L".



# TRACK HEAD INTERNATIONAL CTM2 ADJUSTABLE

## TECHNICAL

### CONSTRUCTION

Track Head: Machined aluminum body; painted finishes are granulated powder coat.

### STATIC WHITE LED



2-step MacAdam ellipse LED module available in 80+, 90+ and 97+ CRI configurations in color temperatures of 2700K, 3000K, 3500K and 4000K. 3-step MacAdam ellipse LED module available in 90+ CRI configuration in color temperature of 2400K. Average rated lamp life of 50,000 hours.

### WARM DIM LED



3-step MacAdam ellipse warm dim LED module available in 90+ CRI configuration. 3000K or 2700K at full brightness, warming to 1800K at full dim. Average rated lamp life of 50,000 hours.

### POWER SUPPLY PERFORMANCE AND DIMMING INFORMATION

Power Supply	IE2
Minimum °C	-20 °C
Maximum °C	40 °C
Dimming %	2.0%

### MOUNTING

Cylinder track head mounts to recessed or surface mount track assemblies, specified separately.

### LISTING

Track heads and drivers CE Listed for dry locations. Drivers ENEC and CB Listed.

### PART L

Part L compliant for all 75+ LPW residential and 95+ LPW commercial configurations.

### WARRANTY

Manufacturer's 1-year warranty guarantees product(s) listed to be free from defects in material and workmanship under normal use and service. 5-year warranty on LED and power supply to operate with 70% of the original flux and remain within a range of 3 duv. Warranty period begins from the date of shipment by Seller. [Consult website for full warranty terms and conditions.](#)

### CHANGE LOG

- 1.05/12/2023: ADDED LBC RED LIST APPROVED.
- 2.08/08/2023: ADDED NEW LED AND OPTIC SYSTEM.
- 3.02/08/2024: ADDED 2400K OFFERING.
- 4.02/15/2024: PART L COMPLIANCE ADDED.
- 5.03/18/2024: UPDATED 10 DEGREE NARROW BEAM TO UTILIZE FIELD REDUCER.
- 6.09/19/2024: UPDATED WITH NEW BAFFLE DESIGN.
- 7.09/30/2024: ADDED ADDITIONAL STEM LENGTHS UP TO 8" MAX.
- 8.11/14/2024: ADDED ADDITIONAL POWDERCOAT FINISHES.
- 9.05/07/2025: UPDATED WARM DIM OFFERING.