

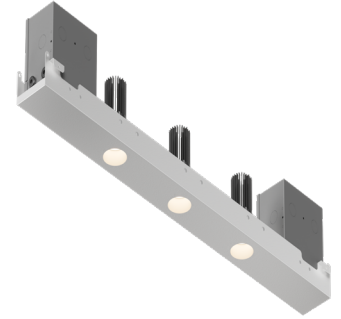
PANELUX™ ATOMOS

The Panelux™ lighting system provides solutions to aesthetic problems of other industry products.

The Panelux™ lighting system is a patent pending innovative solution integrating recessed downlights into metal ceiling panels designed for use with T-Grid systems like Armstrong Techzone®, USG Logix™, and HunterDouglas®*.

SHIPPING MAY 2025

PROJECT NAME:	TYPE:
---------------	-------



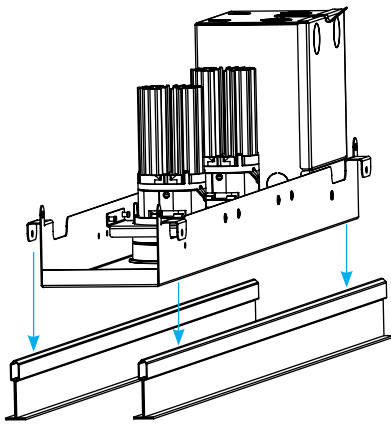
OPTIONALITY

- Configurable dimensions, with panel lengths from 12" - 60" and panel width in 4".
- Available in single, dual, triple and quadruple fixtures with round or square trimless downlights in any combination of fixed / adjustable / wallwasher.
- Choose your on center spacing and controls grouping.
- UGR as low as 3.

INSTALLER FRIENDLY

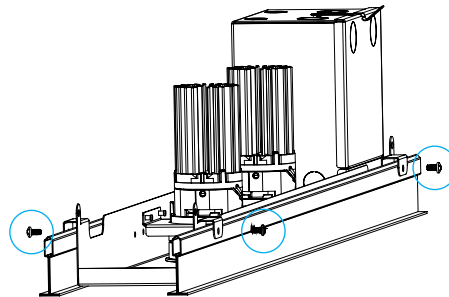
5 minute install process requires one trade professional. Pre-assembled product ships complete. Reduced install time by at least 50% compared to other industry leading panel downlights.

STEP 1



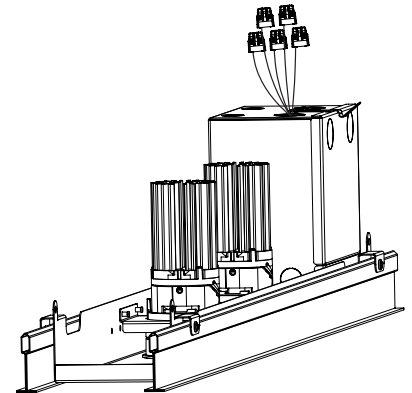
PLACE PANEL IN T-GRID
(SUPPLIED BY OTHERS)

STEP 2



SECURE WITH SCREWS
(SUPPLIED BY OTHERS)

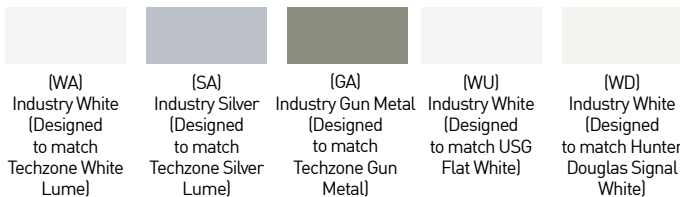
STEP 3



MAKE WIRING CONNECTIONS

AVAILABLE FINISHES

INDUSTRY MATCHING POWDERCOAT



LUCIFER LIGHTING STANDARD POWDERCOAT



* Techzone is a registered trademark of AWI Licensing LLC, Logix is a trademark of USG Corporation, HunterDouglas is a registered trademark of Hunter Douglas Corporation. Lucifer Lighting has no association with Armstrong or AWI Licensing, USG Corporation, or Hunter Douglas Corporation.

PROJECT NAME:	TYPE:
---------------	-------

ORDERING INFORMATION - PANEL

COMPLETE SPECIFICATION	PANEL (REQUIRED)	LED / DRIVER (REQUIRED)	ZONE 1 (REQUIRED)	ZONE 2 (AS NEEDED)
------------------------	------------------	-------------------------	-------------------	--------------------

SPECIFICATION INSTRUCTIONS:

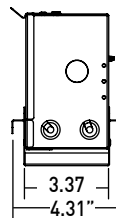
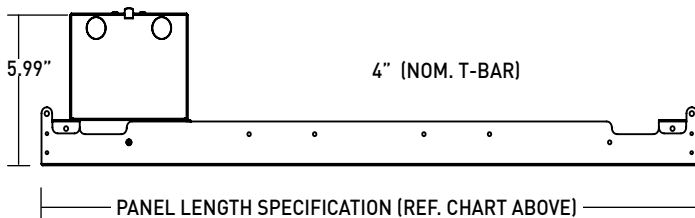
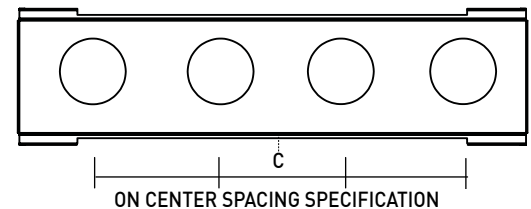
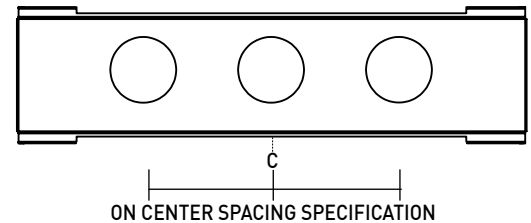
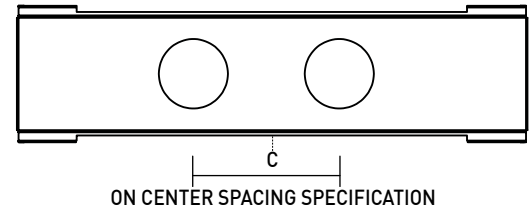
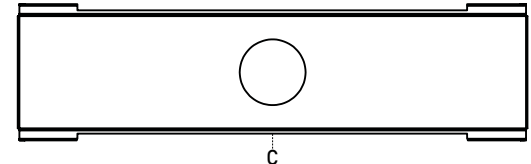
- Specify one or two control zones, all fixtures on each control zone are the same type.
- All fixtures are specified with the same baffle finish.

REQUIRED

PANEL	FIXTURE SHAPE	PANEL WIDTH (INCHES)	PANEL FINISH	PANEL LENGTH (INCHES)	BAFFLE FINISH	FIXTURE COUNT	FIXTURE LAYOUT / CONTROL ZONES	ON CENTER SPACING (INCHES)
P		4						
P A N E L	P Panel	A2R Round A2S Square	4					
				SINGLE	POWDERCOAT		① = ZONE 1 ② = ZONE 2	SINGLE
				18	WH White			00
				24	AB Architectural Bronze	1 Single	A	DUAL*
				30	AG Satin Silver	2 Dual	B	08
				36	AU Cashmere Gold		C	10
				42	SA Industry Silver (Designed to match Techzone White Lume)	3 Triple	D	12
				48	SB Burnt Bronze		E	16
				60	BK Black		F	18
					PR Primer		G	24
				DUAL	CF Custom Finish* (Consult Factory)		H	08
				30	GA Industry Gun Metal (Designed to match Techzone Gun Metal)	4 Quad	I	10
				36	WA Industry White		J	12
				42	SA Industry Silver		K	16
				48	GA Industry Gun Metal		L	18
				60	WU Industry White (Designed to match USG Flat White)		M	TRIPLE*
				TRIPLE	SA Industry Silver			08
				36	GA Industry Gun Metal			10
				42	WU Industry White (Designed to match Hunter Douglas Signal White)			12
				48	WD Industry White (Designed to match Hunter Douglas Signal White)			QUAD*
			QUAD	WD Industry White			08	
			48	CF Custom Finish / Other Industry Finish* (Consult Factory)			10	
			60	CF Other Industry Finish* (Consult Factory)			12	

FIXTURE SPACING GUIDE

FIXTURE COUNT	LENGTH (INCHES)	ON CENTER SPACING (INCHES)					
		08	10	12	16	18	24
SINGLE	ALL	CENTERED IN PANEL					
DUAL	30	✓	✓	-	-	-	-
	36	✓	✓	✓	✓	-	-
	42	✓	✓	✓	✓	✓	-
	48	✓	✓	✓	✓	✓	✓
	60	✓	✓	✓	✓	✓	✓
TRIPLE	36	✓	-	-	-	-	-
	42	✓	✓	-	-	-	-
	48	✓	✓	✓	-	-	-
	60	✓	✓	✓	✓	✓	-
QUAD	48	✓	-	-	-	-	-
	60	✓	✓	✓	-	-	-



PROJECT NAME:	TYPE:
---------------	-------

ORDERING INFORMATION - LED / DRIVER

	PANEL (REQUIRED)	LED / DRIVER (REQUIRED)	ZONE 1 (REQUIRED)	ZONE 2 (AS NEEDED)
COMPLETE SPECIFICATION				



SPECIFICATION INSTRUCTIONS:

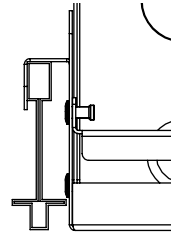
- All fixtures on Zone 1 and Zone 2 must be specified with the same CRI and CCT.
- All fixtures specified on each zone are controlled together.
- Zones 1 and 2 can be controlled together or independently. Separate switch legs are required for independent control.

SPECIFICATION REQUIRED

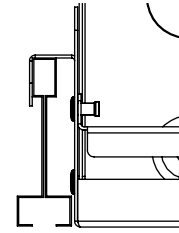
LED DRIVER	CRI	CCT	DRIVER (120V-277V)	
	STATICWHITE			
1 80+ CRI (80)	A	2400K (24)* *90+ CRI Only	A eldoLED ECOdrive, 0-10V LOG, 1% (SG3)	
2 90+ CRI (90)	B	2700K (27)	B eldoLED ECOdrive, 0-10V LIN, 1% (SN3)	
3 95+ CRI (95)	C	3000K (30)	C eldoLED SOLOdrive, 0-10V LOG, 0.1% (EG1)	
	E	3500K (35)	D eldoLED SOLOdrive, 0-10V LIN, 0.1% (EN1)	
	F	4000K (40)	E eldoLED SOLOdrive, DALI-2 DT6, 0.1% (ED1)	
WARM DIM				
W 90+ CRI (90)	D	3000K - 1800K (WD)	F Lutron, Hi-Lume Premier Ecosystem Fade to Black, 0.1% (LP1)	
	L	2700K - 1800K (WL)	G Athena Control eldoLED SOLOdrive, 0.1% (AS1)	
	H	5000K - 2700K (TH)	H Casambi Control eldoLED SOLOdrive, 0.1% (CS1)	
	R	4000K - 1800K (TR)	TUNABLEWHITE ONLY	
T 90+ CRI (90)	I		I eldoLED, DUALdrive, 0-10V LOG, 0.1% (DG1)	
	J		J eldoLED, DUALdrive, DALI-2 DT8, 0.1% (DD2)	
	K		K Athena Control eldoLED SOLOdrive, 0.1% (AD1)	
	L		L Casambi Control eldoLED SOLOdrive, 0.1% (CD1)	

PANEL MOUNTING DETAILS

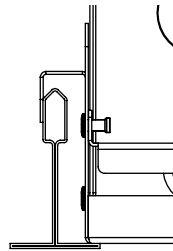
9/16" T-GRID
TEGULAR



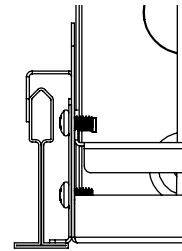
9/16" T-GRID
BOLT SLOT



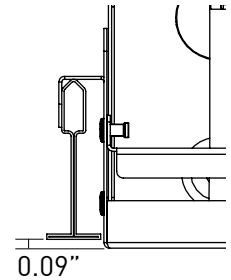
15/16" T-GRID



9/16" T-GRID*



9/16" T-GRID
TEGULAR



* 9/16" T-grid requires accessory part number PANEL-BRACKET.

PROJECT NAME:	TYPE:
---------------	-------

ORDERING INFORMATION - ZONE 1

	PANEL (REQUIRED)	LED / DRIVER (REQUIRED)	ZONE 1 (REQUIRED)	ZONE 2 (AS NEEDED)
COMPLETE SPECIFICATION				



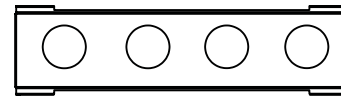
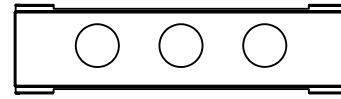
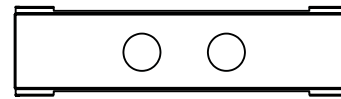
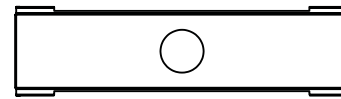
SPECIFICATION INSTRUCTIONS:

- Zone 1 specification required, reference layout/ control zones specification from page 2.
- All fixtures on Zone 1 will carry the same specification.
- Specify Zone 2 fixtures on page 5.

REF. ONLY
FROM P. 2

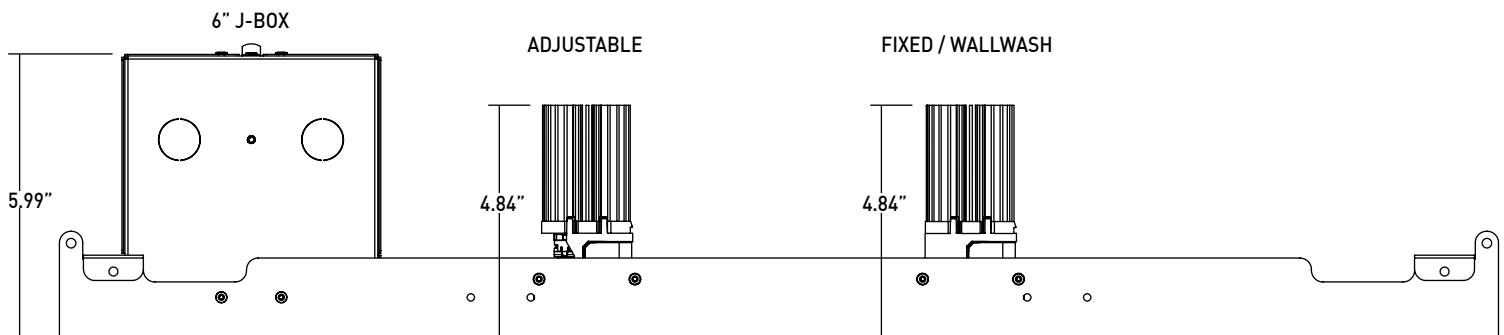
ZONE 1 - REQUIRED

	TRIM TYPE	LED WATTAGE	OPTIC	MEDIA
ZONE 1	AS Adjustable	D 9W 10° Static White, 322lm (09H)	N 10° (10)	STANDARD MEDIA
	FS Fixed	B 6W Static White, 538lm (06D)	1 15° (15)	
	WW Wallwash	J 12W Static White, 920lm (12D)	2 25° (25)	W Wallwash Lens (W)* *(REQUIRED AND ONLY AVAILABLE WITH WALLWASH)
		C 6W Warm Dim (06D) WL 2600K - 1800K: 391lm	3 35° (35)	ALTERNATE MEDIA
		K 12W Warm Dim (12D) WD 3000K - 1800K: 668lm	5 50° (50)	
		E 12W Tunable White (10D) TR 4000K - 1800K: 694lm TH 5000K - 2700K: 611lm	8 80° (80)* *(REQUIRES FOR 7 WIDE DISTRIBUTION FILM)	2 Clear Film (3)* *(NOT AVAILABLE WITH WARM DIM)
		W Wallwash (WW)	7 Wide Distribution Film (6)* *(REQUIRED AND ONLY AVAILABLE WITH 8 (80°) OPTIC)	C Honeycomb Louver and Clear Film (C)* *(NOT AVAILABLE WITH WARM DIM)
		A Adjustable Zoom	H Honeycomb Louver and Soft Focus Film (S)	N No Film (0)* *(NOT AVAILABLE WITH WARM DIM)
			*ONLY AVAILABLE FOR STATIC WHITE. 24°, 30°, 36°, 42° AND 48° BEAM SPREADS	
			PERFORMANCE REFLECTS 80+CRI / 3000K PAIRED WITH 15° OPTIC	



FIXTURE LAYOUT / CONTROL ZONES

	① = ZONE 1 ② = ZONE 2
A	①
B	① ①
C	① ②
D	① ① ①
E	① ① ②
F	① ② ②
G	① ② ①
H	② ① ②
I	① ① ① ①
J	① ① ② ②
K	① ② ① ②
L	① ② ② ①
M	② ① ① ②



PROJECT NAME:	TYPE:
---------------	-------

ORDERING INFORMATION - ZONE 2

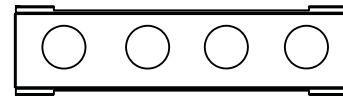
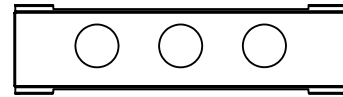
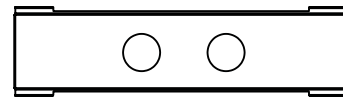
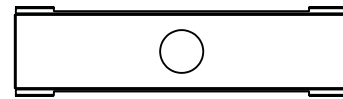
	PANEL (REQUIRED)	LED / DRIVER (REQUIRED)	ZONE 1 (REQUIRED)	ZONE 2 (AS NEEDED)
COMPLETE SPECIFICATION				

SPECIFICATION INSTRUCTIONS:

- Specify Zone 2 as needed based upon fixture layout/ control zones specification from page 2.
- Zone 2 fixtures will carry the same fixture shape specification as Zone 1.
- All fixtures on Zone 2 will carry the same specification.

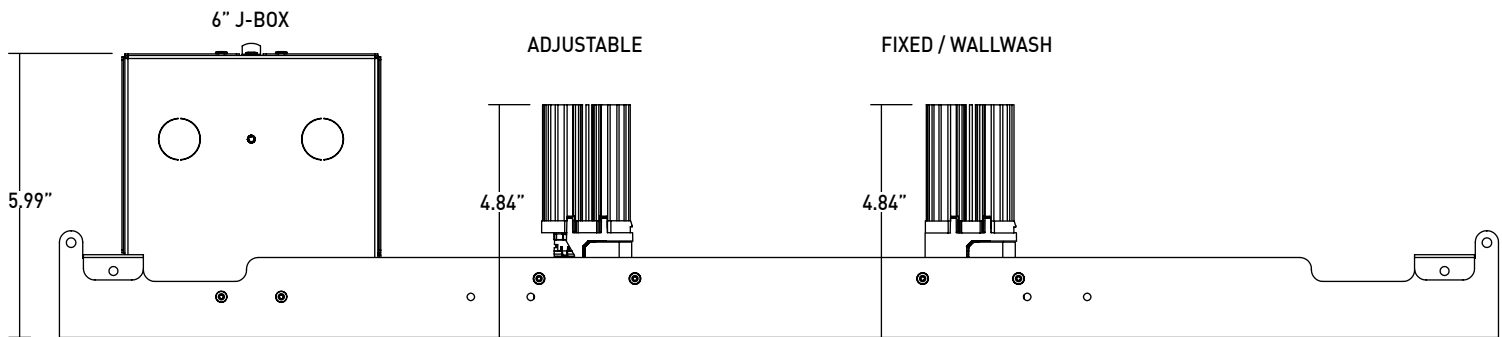
ZONE 2 - AS NEEDED

	TRIM TYPE	LED WATTAGE	OPTIC	MEDIA
ZONE 2	AS Adjustable	D 9W 10° Static White, 322lm (09H)	N 10° (10)	STANDARD MEDIA
	FS Fixed	B 6W Static White, 538lm (06D)	1 15° (15)	4 Soft Focus Film (4)* *(REQUIRED WITH N (10°) OPTIC)
	WW Wallwash	J 12W Static White, 920lm (12D)	2 25° (25)	W Wallwash Lens (W)* *(REQUIRED AND ONLY AVAILABLE WITH WALLWASH)
		C 6W Warm Dim (06D) WL 2600K - 1800K: 391lm	3 35° (35)	ALTERNATE MEDIA
		K 12W Warm Dim (12D) WD 3000K - 1800K: 668lm	5 50° (50)	1 Honeycomb Louver (2)* *(NOT AVAILABLE WITH WARM DIM)
	E 12W Tunable White (10D) TR 4000K - 1800K: 694lm TH 5000K - 2700K: 611lm	8 80° (80)* *(REQUIRES FOR 7 WIDE DISTRIBUTION FILM)	2 Clear Film (3)* *(NOT AVAILABLE WITH WARM DIM)	
		W Wallwash (WW)	6 Linear Spread Film (5)	
		A Adjustable Zoom*	7 Wide Distribution Film (6)* *(REQUIRED AND ONLY AVAILABLE WITH 8 (80°) OPTIC)	
		ONLY AVAILABLE FOR STATIC WHITE. 24°, 30°, 36°, 42° AND 48° BEAM SPREADS	C Honeycomb Louver and Clear Film (C) *(NOT AVAILABLE WITH WARM DIM)	
		PERFORMANCE REFLECTS 80+CRI / 3000K PAIRED WITH 15° OPTIC	H Honeycomb Louver and Soft Focus Film (S) *(NOT AVAILABLE WITH WARM DIM)	
			N No Film (0)* *(NOT AVAILABLE WITH WARM DIM)	



REF. ONLY FROM P. 2

FIXTURE LAYOUT / CONTROL ZONES	
	① = ZONE 1 ② = ZONE 2
A	①
B	① ①
C	① ②
D	① ① ①
E	① ① ②
F	① ② ②
G	① ① ①
H	② ① ②
I	① ① ① ①
J	① ① ② ②
K	① ② ① ②
L	① ② ② ①
M	② ① ① ②



PROJECT NAME:	TYPE:
---------------	-------

ACCESSORIES

ALTERNATE MEDIA

Consult factory for additional configurations.

- CGL-AR** Clear Film*
*NOT AVAILABLE WITH WARM DIM
- SFL-AR** Soft Focus Film
- HCL-AR** Honeycomb Louver*
*NOT AVAILABLE WITH WARM DIM
- LSL-AR** Linear Spread Film
- WDL-AR** Wide Distribution Film*
*REQUIRED AND ONLY AVAILABLE WITH 8 (80°) OPTIC

REPLACEMENT OPTICS

Interchangeable optics accessible through fixture aperture.

- RO-A-15-1** 15° optic
- RO-A-25-1** 25° optic
- RO-A-35-1** 35° optic
- RO-A-50-1** 50° optic
- RO-A-AZ-1** Adjustable zoom optic*
*[24°, 30°, 36°, 42° AND 48° BEAM SPREADS. NOT AVAILABLE FOR WARM DIM OR TUNABLE WHITE.]
- RO-A-WW-1** Wallwash optic

ADJUSTMENT TOOL

One provided for every 10 adjustable fixtures.

- TOOL-HEX-050** Adjustment Tool

9/16" T-GRID ACCESSORY

Required for 9/16" T-Grid installation

- PANEL-BRACKET**

PERFORMANCE - 3000K

LUMEN PACKAGE	WATTS	10° OPTIC FIELD REDUCER KIT		15° OPTIC SOFT FOCUS FILM		25° OPTIC SOFT FOCUS FILM		35° OPTIC SOFT FOCUS FILM		50° OPTIC SOFT FOCUS FILM		80° OPTIC WIDE DIST. FILM		ROUND WALLWASH WALLWASH LENS		SQUARE WALLWASH WALLWASH LENS	
		DLVD.	LPW	DLVD.	LPW	DLVD.	LPW	DLVD.	LPW	DLVD.	LPW	DLVD.	LPW	DLVD.	LPW	DLVD.	LPW
8006D	6	-	-	538	90	534	89	472	79	501	84	431	72	549	92	603	101
8009H	9	322	36	-	-	-	-	-	-	-	-	-	-	-	-	-	-
8012D	12	-	-	920	77	912	76	807	67	857	71	779	65	934	77	1032	87
9006D	6	-	-	455	76	452	75	400	67	424	71	365	61	465	78	511	85
9009H	9	273	30	-	-	-	-	-	-	-	-	-	-	-	-	-	-
9012D	12	-	-	779	65	773	64	684	57	726	61	624	52	796	66	874	74
9506D	6	-	-	405	68	402	67	356	59	378	63	325	54	414	69	455	76
9509H	9	251	28	-	-	-	-	-	-	-	-	-	-	-	-	-	-
9512D	12	-	-	693	58	688	57	609	51	646	54	555	46	708	59	778	65
9006D (27K-18K)	6	-	-	391	65	388	65	343	57	364	61	313	52	396	66	416	69
9012D (30K-18K)	12	-	-	668	55	663	55	587	49	623	52	535	45	677	58	712	61
9010DTR (18K-4K)	10	-	-	694	69	696	70	612	61	685	68	582	58	709	70	723	72
9010DTH (27K-5K)	10	-	-	611	61	613	61	539	54	603	60	512	51	619	62	636	64

*Adjustable zoom optic performance is listed on page 7. LIN-TO-LIN 0-10V pairing not compatible with Warm Dim or Tunable White.

OUTPUT MULTIPLIER

CCT	CCT SCALE
2400K	0.76
2700K	0.95
3000K	1.00
3500K	1.05
4000K	1.06

TUNABLE WHITE MULTIPLIER

CCT	5000K-2700K	4000K-1800K
5000K	1.16	-
4000K	1.08	1.14
3500K	1.04	1.07
3000K	1.00	1.00
2700K	0.96	0.92
2400K	-	0.84
1800K	-	0.69

MEDIA LIGHT LOSS FACTOR

MEDIA	LLF
NO MEDIA	1.11
SOFT FOCUS	1
CLEAR	1
HONEYCOMB	0.77
HONEYCOMB W/ SOFT FOCUS	0.77
LINEAR SPREAD	0.76
HONEYCOMB W/ CLEAR	0.76

FINISH LIGHT LOSS FACTOR

BAFFLE FINISH	LLF
WHITE	1.00
CASHMERE GOLD	0.96
SATIN SILVER	0.95
BURNT BRONZE	0.93
BLACK	0.92

UNIFIED GLARE RATING

10° OPTIC NO LENS	15° OPTIC SOFT FOCUS FILM	25° OPTIC SOFT FOCUS FILM	35° OPTIC SOFT FOCUS FILM	50° OPTIC SOFT FOCUS FILM	85° OPTIC WIDE DISTRIBUTION	WW OPTIC WALLWASH LENS
4-10	15-18	16-19	19-22	19-22	25-28	25-29

*UGR values reflect white baffle and vary based on wattage, lower UGR values available with different finishes.

PROJECT NAME:	TYPE:
---------------	-------

ADJUSTABLE ZOOM OPTIC PERFORMANCE - 3000K

LUMEN PACKAGE	WATTS	24° Zoom-Position 1 SOFT FOCUS FILM		30° Zoom-Position 2 SOFT FOCUS FILM		36° Zoom-Position 3 SOFT FOCUS FILM		42° Zoom-Position 4 SOFT FOCUS FILM		48° Zoom-Position 5 SOFT FOCUS FILM	
		DLVD.	LPW	DLVD.	LPW	DLVD.	LPW	DLVD.	LPW	DLVD.	LPW
8006D	6	469	78	473	79	446	74	427	71	422	70
8012D	12	803	67	810	67	763	64	731	61	721	60
9006D	6	398	66	401	67	378	63	362	60	357	60
9012D	12	680	57	686	57	646	54	619	52	611	51
9506D	6	354	59	357	59	336	56	322	54	318	53
9512D	12	605	50	611	51	575	48	551	46	544	45

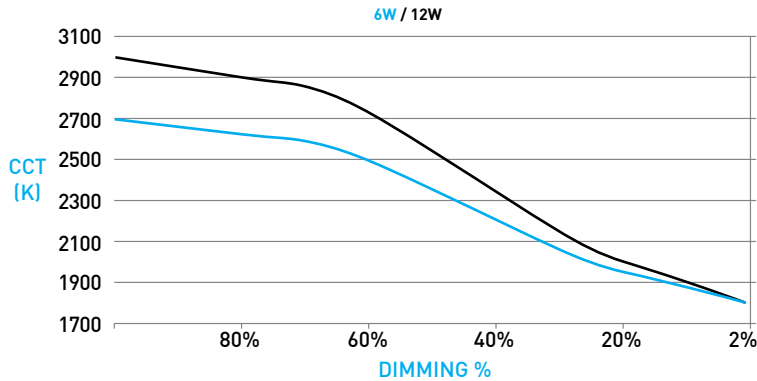
WARM DIM PERFORMANCE - SOFT FOCUS FILM - 15° OPTIC

HALOGEN DIMMING PROFILE

9012D 3000K - 1800K	Full on 100%	Dimmed to 80%	Dimmed to 70%	Dimmed to 50%	Dimmed to 20%	Dimmed to 10%	Dimmed to 2%
CCT (K)	3000	2900	2850	2550	2000	1900	1800
Light Output (Lm)	668	534	467	334	133	66	13
Power (W)	12	9.6	8.4	6	2.4	1.2	0.2
Efficacy (LPW)	55	55	55	55	55	55	55

INCANDESCENT DIMMING PROFILE

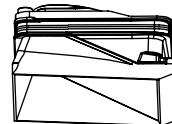
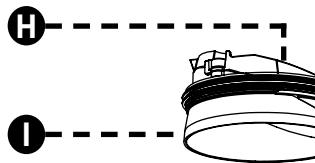
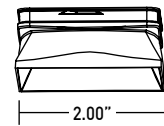
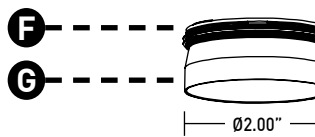
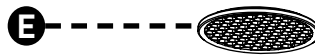
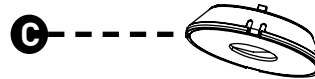
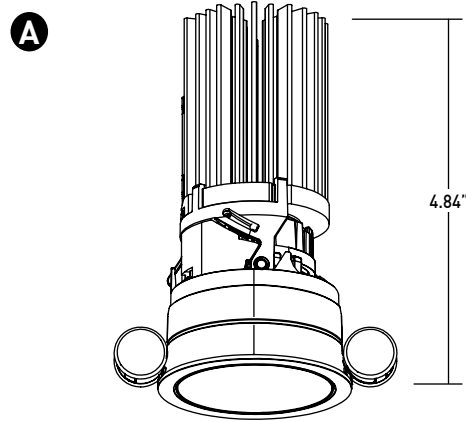
9006D 2700K - 1800K	Full on 100%	Dimmed to 80%	Dimmed to 70%	Dimmed to 50%	Dimmed to 20%	Dimmed to 10%	Dimmed to 2%
CCT (K)	2700	2650	2620	2400	1950	1900	1800
Light Output (Lm)	391	313	274	196	78	39	8
Power (W)	6	4.8	4.2	3	1.2	0.6	0.1
Efficacy (LPW)	65	65	65	65	65	65	65



PROJECT NAME:	TYPE:
---------------	-------

COMPONENT DRAWINGS / DIMENSIONS

- A ADJUSTABILITY**
Hot-aim tilt up to 30° and 362° rotation. Offset pivot point optimizes center beam. Max ceiling thickness for 30° tilt is 1-3/8".
- B STANDARD OPTICS**
Proprietary optic integrates Reflection, Refraction and TIR offering 15°, 25°, 35°, and 50° beams. 25° optic used for optimal accent washing.
- C WALLWASH OPTIC**
35° optic.
- D 10° FIELD REDUCER**
Provided with 10° optic, includes honeycomb louver.
- E HONEYCOMB LOUVER**
Clips onto optic.
- F ADJUSTABLE AND FIXED MEDIA**
Soft focus media standard and sealed to baffle on Wet locations. Fixture is limited to 1 media and the honeycomb louver.
- G ADJUSTABLE AND FIXED BAFFLE**
Die-cast removable baffle provides easy access to tilting mechanism and features 45° glare cutoff. Minimizes aperture glare and conceals view into housing or ceiling; includes silicone gasket. Square baffle transitions from square to round.
- H WALLWASH MEDIA**
Acrylic wallwash lens, included and sealed in place.
- I WALLWASH BAFFLE**
Die-cast removable baffle minimizes aperture glare and conceals view into housing or ceiling; includes silicone gasket. Square baffle sits proud of the flange or ceiling plane to provide enhanced wallwashing effect.



DRIVER / ZONE CONTROL GUIDE

Fixtures ship pre-wired to drivers based on fixture layout / control zone specification. Each driver requires connections to mains voltage and controls as applies. Not all layouts shown, for reference only.

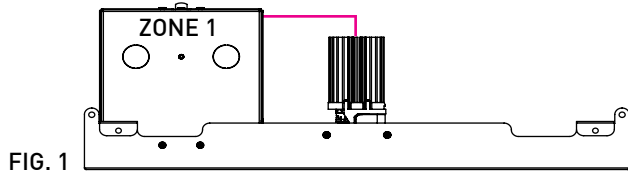


FIG. 1

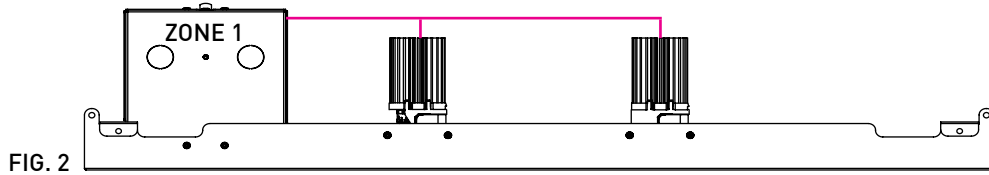


FIG. 2

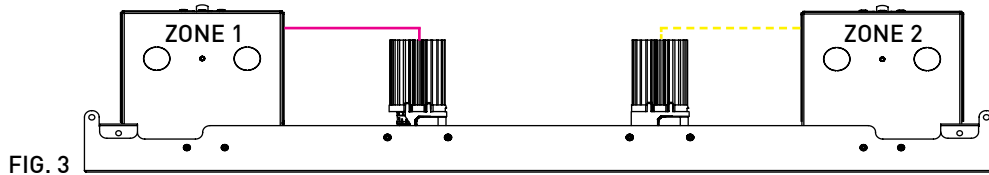


FIG. 3

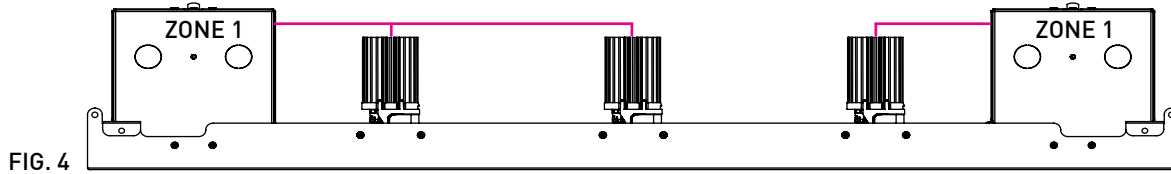


FIG. 4

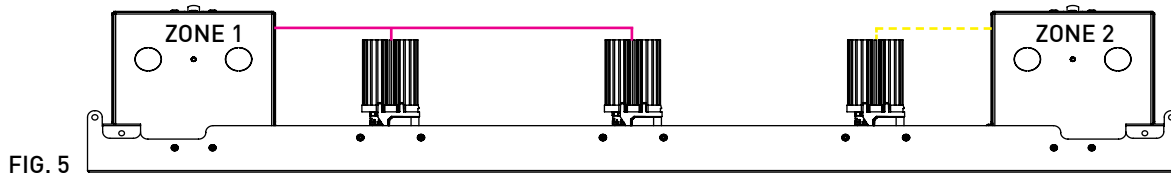


FIG. 5

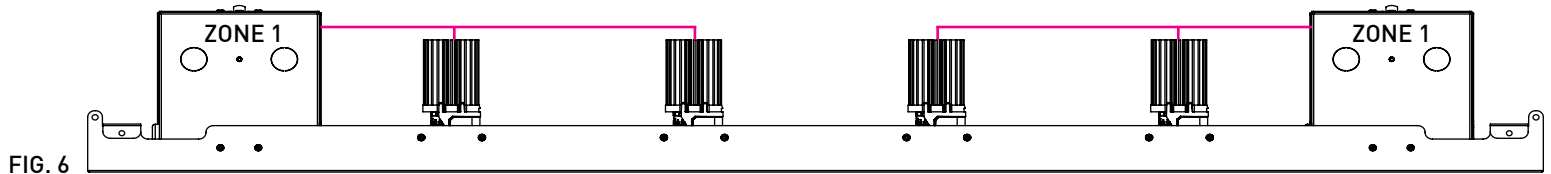


FIG. 6

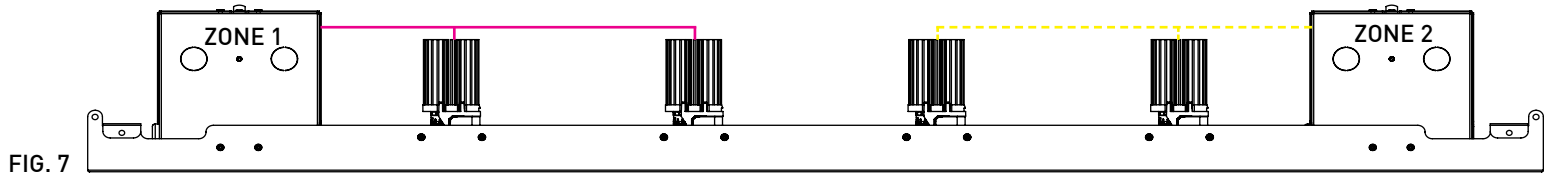


FIG. 7

FIXTURE LAYOUT / CONTROL ZONES	REF. FIGURE
① = ZONE 1 ② = ZONE 2	
A	FIG. 1
B	FIG. 2
C	FIG. 3
D	FIG. 4
E	FIG. 5
F	FIG. 5
G	FIG. 5
H	FIG. 5
I	FIG. 6
J	FIG. 7
K	FIG. 7
L	FIG. 7
M	FIG. 7

PANELUX™ ATOMOS

PROJECT NAME:	TYPE:
---------------	-------

TECHNICAL

CONSTRUCTION

Downlight: Painted finishes are granulated powder coat. Forged aluminum heat-sink.

Panel: Aluminum and 22 Gauge galvanized steel.

Power Supply: 22 Gauge galvanized steel.

STATIC WHITE LED

2-step MacAdam ellipse LED module available in 80+, 90+, and 95+ CRI configurations in color temperatures of 2700K, 3000K, 3500K and 4000K. 3-step MacAdam ellipse LED module available in 90+ CRI configuration in color temperature of 2400K. Average rated lamp life: 50,000 hours. LED and driver assemblies are field-replaceable.

WARM DIM LED

3-step MacAdam ellipse warm dim LED module available in 90+ CRI configuration. 3000K or 2700K at full brightness, warming to 1800K at full dim. Average rated lamp life of 50,000 hours. LED and driver assemblies are field-replaceable.

TUNABLE WHITE LED

3-step MacAdam ellipse tunable white LED module available in 90+ CRI configuration. Features tuning range of 2700K to 5000K and 1800K to 4000K. Average rated lamp life of 50,000 hours. Driver assemblies are field-replaceable.

POWER SUPPLY PERFORMANCE AND DIMMING INFORMATION

Power Supply	0-10V					ECO	DALI-2		ATHENA		CASAMBI	
	SG3	SN3	EG1	EN1	DG1	LP1	ED1	DD2	AS1	AD1	CS1	CD1
Minimum °C	-20 °C	-20 °C	-20 °C	-20 °C	-20 °C	0 °C	-20 °C	-20 °C	0 °C	0 °C	-20 °C	-20 °C
Maximum °C	40 °C	40 °C	40 °C	40 °C	40 °C	40 °C	40 °C	40 °C	40 °C	40 °C	40 °C	40 °C
Dimming %	1.0%	1.0%	0.1%	0.1%	0.1%	0.1%	0.1%	0.1%	0.1%	0.1%	0.1%	0.1%

Note: For LP1, EG1 and EN1 drivers consult chart on page x to confirm appropriate dimming curve for compatibility with selected control.

WALLWASH SPACING

Recommended fixture spacing is 36" (914mm) on center with 36" (914mm) setback from wall plane.

LISTING

UL listed to UL1598 standard for Dry / Damp locations.

NEMA 410 Compliant.

BUY AMERICAN ACT

All Panelux™ Atomos configurations are Buy American Act compliant.

DECLARE

LBC Red List Approved.

WEIGHT

3.50lbs per foot.

SETBACKS

- Minimum 0.50" setback from combustibles and non-combustibles materials on all sides and top of housing.
- Minimum 3.00" setback from insulation material having max R-Value 30 on all sides and top of housing.
- Minimum 6.00" setback from polycell spray foam insulation having max R-Value 60.

LIMITED WARRANTY

Manufacturer's Limited Warranty guarantees product(s) listed to be free from defects in material and workmanship under normal use and service for 1-year. LED and power supplies are warranted to operate with 70% of original flux and remain within a range of 3 duv for a period of 5-years. 10-year Lutron Advantage limited warranty available on Lutron equipped systems. Warranty period begins from the date of shipment by Seller. [Consult website for full warranty terms and conditions.](#)

PROJECT NAME:	TYPE:
---------------	-------

DIMMING COMPATIBILITY

LUTRON DRIVER COMPATIBILITY

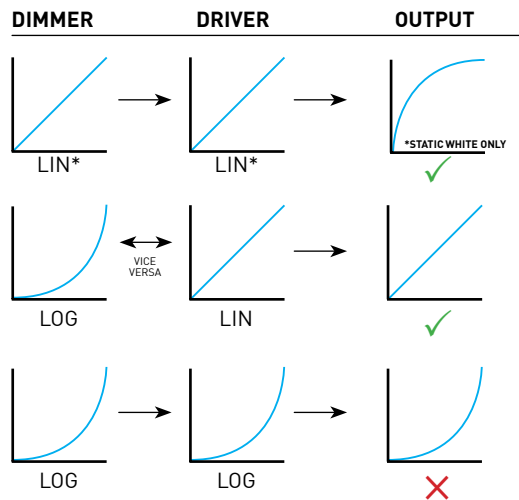
Power supply LP1 Lutron Product Family	Part No.
PowPak Dimming Modules	RMJ-ECO32-DV-B
PowPak Dimming Modules	FCJ/FCJS-ECO
Energi Savr Nodes	QSN-1ECO-S
GRAFIK Eye QS control unit Homeworks QS control unit	QSN-2ECO-S
GRAFIK Eye QS control unit Homeworks QS control unit	QSGRJ-_E (wireless) QSGR-_E
Quantum Hub	QP2-__2C
Quantum Hub	QP2-__4C
Quantum Hub	QP2-__6C
Quantum Hub	QP2-__8C
Homeworks QS power module myRoom Plus power module	LQSE-2ECO-D



eldoLED DRIVER COMPATIBILITY

Power supply EG1 / SG3 Manufacturer	Family/Model #
Busch-Jaeger	2112U-101
Jung	240-10
Leviton Lighting Controls	IP710-DLX
Lightolier Controls	ZP600FAM120
Merten	5729
Pass & Seymour	CD4FB-W
The Watt Stopper	DCLV1
Synergy	ISD BC
Crestron®	GLX-DIMFLV8
Crestron®	GLXP-DIMFLV8
Crestron®	GLPAC-DIMFLV4-*
Crestron®	GLPAC-DIMFLV8-*
Crestron®	GLPP-DIMFLVEX-PM
Crestron®	GLPP-1DIMFLV2EX-PM
Crestron®	GLPP-1DIMFLV3EX-PM
Crestron®	DIN-A08
Crestron®	DIN-4DIMFLV4
Crestron®	CLS-EXP-DIMFLV
Crestron®	CLCI-1DIMFLV2EX
Power supply EN1 / SN3 Manufacturer	Family/Model #
Lutron Electronics	Nova T® - NTFTV
Lutron Electronics	Diva® - DVTV
Lutron Electronics	Nova® - NFTV
Lutron Electronics	GrafixEye® GRX-TVI w GRX3503
Lutron Electronics	Energy Savr Node™ - QSN-4T16-S
Lutron Electronics	TVM2 Module
Sensor Switch	nIO EZ
ABB	SD/S 2.16.1

ANALOG DRIVERS AND DIMMERS



LIN = LINEAR
LOG = LOGARITHMIC
*LIN-TO-LIN NOT COMPATIBLE FOR WARM-DIM OR TUNABLE WHITE